

## SLS2020 4.5Litre Ultrasonic Bath (Heated)

The SLS Lab Pro range of analogue baths are compact and user friendly, offering effective cleaning and processing of small items in both professional and domestic applications.

Available in heated and unheated versions, the analogue baths allow simple control of time (0 to 15 minutes) and temperature (ambient to 70°C) where heated options are selected.

The SLS2020 is a 4.5Litre ultrasonic bath with heating function to reduce processing time. Each analogue bath is supplied complete with a stainless steel basket and ABS plastic lid, useable as a drip tray to collect excess water when the basket is removed from the tank.

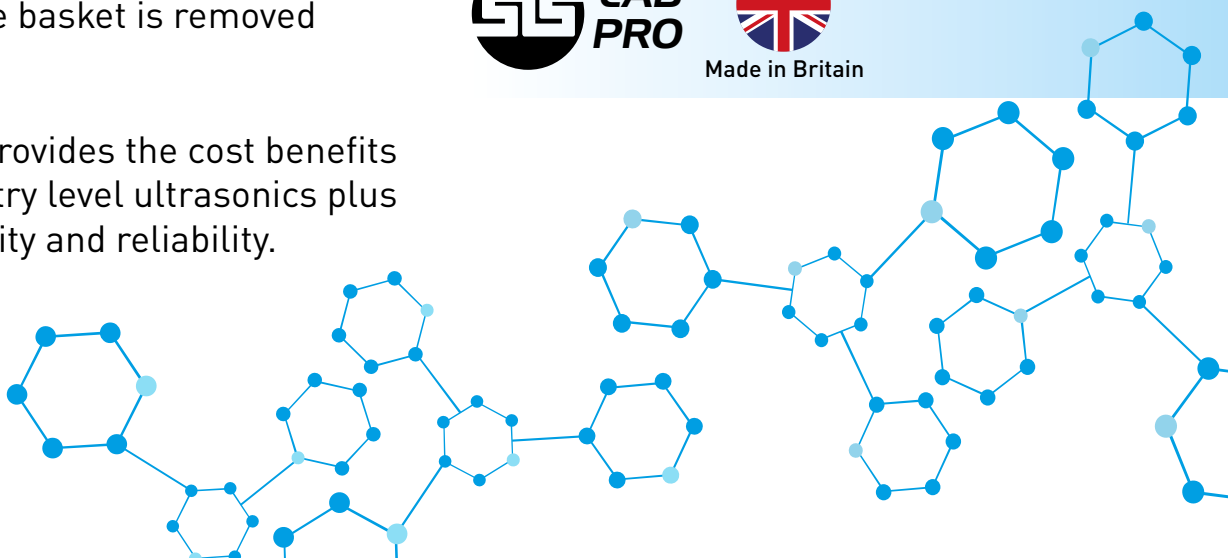
The SLS2020 provides the cost benefits of excellent entry level ultrasonics plus renowned quality and reliability.

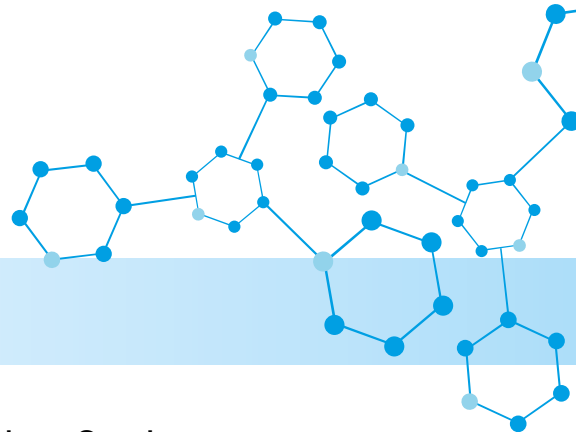


Specifications are subject to change for continual improvements



Made in Britain





## SPECIFICATIONS

Construction Case	304 Stainless Steel
Construction Tank	304 Stainless Steel
Control	Analogue (Time & Temperature)
Overall Dimensions	330 x 180 x 275mm (WxDxH)
Tank Dimensions	300 x 150 x 150mm (WxDxH)
Internal Basket Dimensions	265 x 115 x 90mm (WxDxH)
Maximum Capacity	5.0Litres
Working Capacity	4.5Litres
Ultrasonic Power	100W
Ultrasonic Power (per litre)	22.2W/Litre
Operating Frequency	32 – 38kHz
Maximum Heating Capacity	Ambient - 70°C
Heater Power	150W
Timer	0 – 15 minutes
Mains Connection	220 - 240Vac (50 – 60Hz)
Drain Outlet	1/2" BSP valve*
Lid	ABS Plastic
Basket	304 Stainless Steel
Gross Weight (inc. lid, basket & packaging)	6.2kg
Net Weight	5.6kg
Warranty	3 Years

\*Drain is located at bottom right at the back of the machine

For more information on these products contact: