

## SLS2006

### 1.5Litre Ultrasonic Bath (Heated)

The SLS Lab Pro range of analogue baths are compact and user friendly, offering effective cleaning and processing of small items in both professional and domestic applications.

These include healthcare, podiatry, tattooists, jewellers and many more. Available in heated and unheated versions, the analogue baths allow simple control of time (0 to 15 minutes) and temperature (ambient to 70°C) where heated options are selected.

The SLS2006 is a 1.5Litre ultrasonic bath with heating function to reduce processing time. Each analogue bath is supplied complete with a stainless steel basket and ABS plastic lid, useable as a drip tray to collect excess water when the basket is removed from the tank.

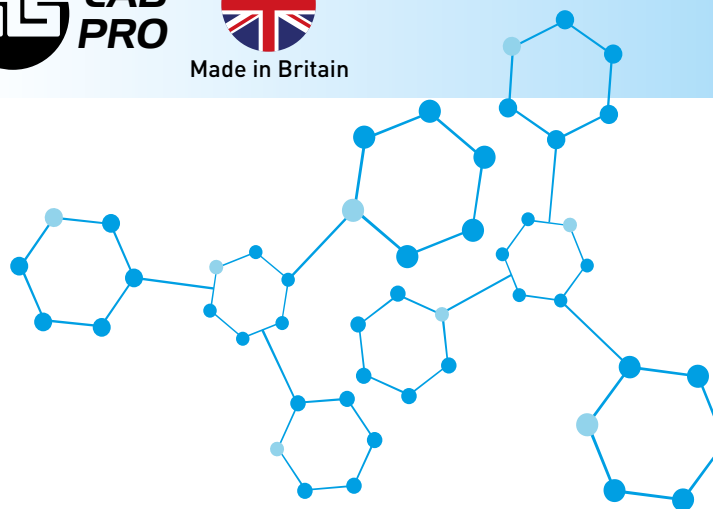
The SLS2006 provides the cost benefits of excellent entry level ultrasonics plus renowned quality and reliability.

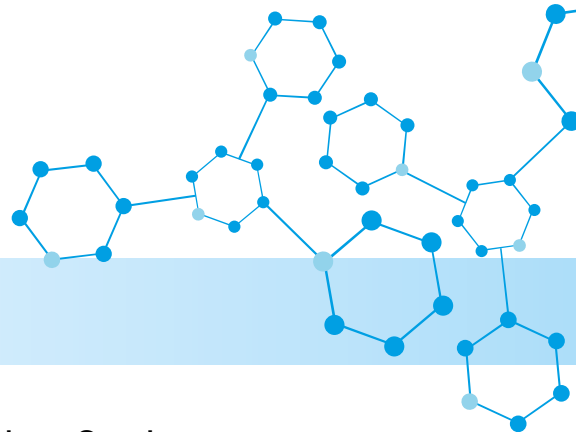


Specifications are subject to change for continual improvements



Made in Britain





## SPECIFICATIONS

Construction Case	304 Stainless Steel
Construction Tank	304 Stainless Steel
Control	Analogue (Time)
Overall Dimensions	180 x 160 x 190mm (WxDxH)
Tank Dimensions	150 x 140 x 100mm (WxDxH)
Internal Basket Dimensions	115 x 95 x 63mm (WxDxH)
Maximum Capacity	1.75Litres
Working Capacity	1.5Litres
Ultrasonic Power	35W
Ultrasonic Power (per litre)	23.3W/Litre
Operating Frequency	44kHz
Maximum Heating Capacity	Ambient - 70°C*
Heater Power	80W
Timer	0 - 15 minutes
Mains Connection	220 - 240Vac (50 - 60Hz)
Drain Outlet	Not applicable
Lid	ABS Plastic
Basket	304 Stainless Steel
Gross Weight (inc. lid, basket & packaging)	4.5kg
Net Weight	3.7kg
Warranty	3 Years

For more information on these products contact: