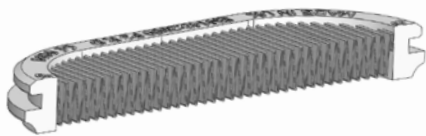
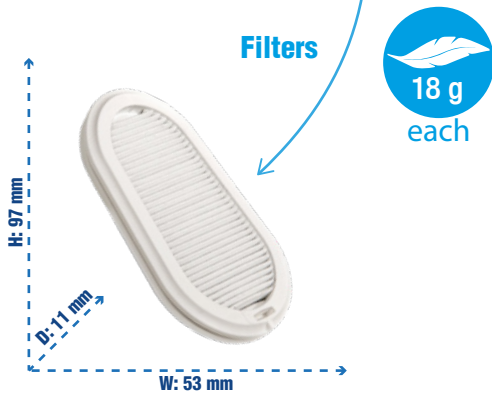


# ELIPSE® HALF-FACE MASK + HESPA™ P3 DUST (R) Filters



**Encapsulation (patented technology)**  
645 mm; length of actual media in each filter



### Standards

EN140: 1998 Mask Body  
EN143: 2000+A1: 2006 P3 RD  
CE 2797

### Efficiency

P3 >99,95% for 0,3 µ particulate

### Weight

Mask + Filter: net (S/M) 130 g; (M/L) 138 g  
gross (S/M) 185 g; (M/L) 193 g  
Filter: net 18 g each; both net 36 g, gross 59 g

### Shelf Live

5 years (mask & filters) See storage conditions on Instructions for Use.  
Filters are re-usable and changeable.

### Material

- **Mask:** Medical grade TPE Conforms to ISO 10993-10: 2010 for irritations. Mask body latex and silicone free, odour free. Valve Body in Nylon, Inhalation/Exhalation diaphragm in Silicone. 4 point adjustable elasticated head and neck strap with comfort pad in TPE.
- **Filters:** Mechanical type multi-layer HESPA Synthetic media with TPE flexible overmolded / encapsulated.

### Production

United Kingdom  
100% of filters NaCl Tested

Code	Description	Quantity
SPR299 (S/M) SPR501 (M/L)	Elipse Half Mask complete with P3 filters	10 pcs. per box
SPR316	Elipse P3 replacement filters	10 sets of 2 pcs. per box
SPM001	Elipse Dust Mask Carry Case (Belt holder)	10 sets per box
SPM414	Portacount Face Fit Kit adaptor	10 sets per box

## Applications - dust, mist and fumes

### Welding and Grinding

Metal Fumes and Dust



### Construction

Silica Dust, Abestos, Concrete Dust, Stone Dust, Aggregate Dust, Wood Dust, Cement Dust, Mold



### Mining

Coal Dust, Silica Dust



### Manufacturing

Glass Fibres, Composite Fibres, Lead Fumes



### Food

Poultry, Powders (Dairy), Spices, Grain Dust



### Pharmaceutical

Powders, Viruses

