

## Model CB-S 170 | CO<sub>2</sub> incubators with hot air sterilization

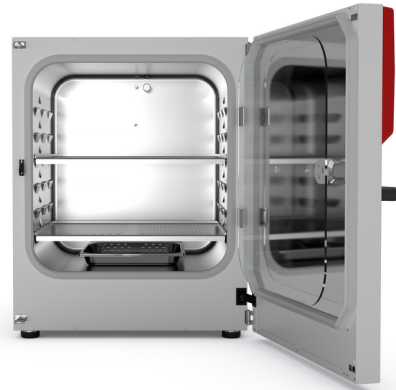
The durable and affordable CB-S series incubators are suitable for routine cell cultivation applications in the field of cell production, particularly in academic settings. They are contamination-proof due to 180°C hot air sterilization and reliably pH-stable thanks to the drift-free infrared CO<sub>2</sub> measurements conducted in real time.

### BENEFITS

- Safe – cell cultures receive maximum protection against contamination
- Reliable – constant well-being conditions for the cells
- Smart – simple routine cleaning and convenient operation
- Economical – efficient operation without consumables



Model 170



Model 170

### IMPORTANT FEATURES

- Temperature range: +6°C above ambient temperature to +50°C
- Humidity range: 90 to 95% RH
- CO<sub>2</sub> control range: 0 to 20 vol.% CO<sub>2</sub>
- Tried-and-tested anti-contamination concept with 180°C hot air sterilization
- Humidification system with condensation protection
- CO<sub>2</sub> gas mixing jet with Venturi effect
- CO<sub>2</sub> sensor with infrared technology
- LCD to display temperature and CO<sub>2</sub> along with additional information and alarms
- Internal data logger, measured values can be read out in open format via USB
- Tightly fitted inner door made of safety glass
- Seamless stainless steel inner chamber
- Perforated shelves, stainless steel
- Troubleshooting system with visual and acoustic alarms
- Interfaces: Ethernet, USB, zero-voltage alarm contact
- Units can be stacked with stacking adapters; the CB-S is suitable for stacking with CB and CBF models of the same size

### OPTIONAL EQUIPMENT

- Copper interior fittings consisting of copper shelves and copper-plated water pan
- Stacking adapter for secure, space-saving installation
- CO<sub>2</sub> gas tank changer for connecting two gas tanks to one or two incubators
- CO<sub>2</sub> shaker with corrosion-resistant components in a stainless-steel housing
- APT-COM Multi Management Software – for managing, recording, and documenting unit parameters
- Services – wide range of services to ensure that the unit functions correctly

### ORDERING INFORMATION

Interior volume [L]	Power supply - unit fuse	Plug*	Version	Model version	Art.-No.
<b>Model CB-S 170</b>					
170	200...230 V 1~ 50/60 Hz -10,0 A	CEE 7/7	Standard	CBS170-230V	9640-0001
			with Access port 30 mm left	CBS170-230V-D	9640-0029

Interior volume [L]	Power supply - unit fuse	Plug*	Version	Model version	Art.-No.
	100...120 V 1~ 50/60 Hz -16,0 A	NEMA 5-20	Standard	CBS170UL-120V	9640-0002
			with Access port 30 mm left	CBS170UL-120V-D	9640-0030

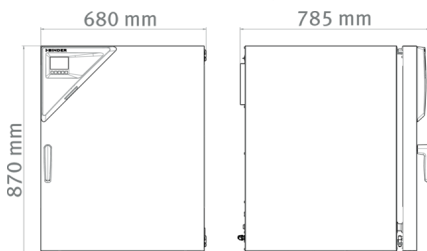
## TECHNICAL DATA

Data				
Designation	CBS170-230V	CBS170-230V-D	CBS170UL-120V	CBS170UL-120V-D
Article Number	9640-0001	9640-0029	9640-0002	9640-0030
Option model	Standard	with Access port 30 mm left	Standard	with Access port 30 mm left
Performance Data Temperature				
Temperature range	+6 °C above ambient temperature to 50 °C	+6 °C above ambient temperature to 50 °C	+6 °C above ambient temperature to 50 °C	+6 °C above ambient temperature to 50 °C
Temperature uniformity at 37°C	0.3 ± K	0.3 ± K	0.3 ± K	0.3 ± K
Temperature fluctuation at 37°C	0.1 ± K	0.1 ± K	0.1 ± K	0.1 ± K
Recovery time after door was opened for 30 s at 37°C	6 min	6 min	6 min	6 min
Performance Data Climate				
Humidity range	90 ...95 % RH	90 ...95 % RH	90 ...95 % RH	90 ...95 % RH
Gas Data				
CO <sub>2</sub> range	0 ...20 Vol.-% CO <sub>2</sub>	0 ...20 Vol.-% CO <sub>2</sub>	0 ...20 Vol.-% CO <sub>2</sub>	0 ...20 Vol.-% CO <sub>2</sub>
CO <sub>2</sub> measuring technology	IR	IR	IR	IR
CO <sub>2</sub> recovery time after door was opened for 30 s at 5 vol. % CO <sub>2</sub>	5 min	5 min	5 min	5 min
Electrical data				
Rated Voltage	200...230 V	200...230 V	100...120 V	100...120 V
Power frequency	50/60 Hz	50/60 Hz	50/60 Hz	50/60 Hz
Nominal power	1,3 kW	1,3 kW	1,3 kW	1,3 kW
Unit fuse	10,0 A	10,0 A	16,0 A	16,0 A
Phase (Nominal voltage)	1~	1~	1~	1~
Measures				
Interior volume	170 L	170 L	170 L	170 L
Net weight of the unit (empty)	96 kg	96 kg	96 kg	96 kg
Load per rack	10 kg	10 kg	10 kg	10 kg
Permitted load	30 kg	30 kg	30 kg	30 kg
Wall clearance back	100 mm	100 mm	100 mm	100 mm
Wall clearance sidewise	50 mm	50 mm	50 mm	50 mm

Housing dimensions not incl. fittings and connections				
Width net	680 mm	680 mm	680 mm	680 mm
Height net	870 mm	870 mm	870 mm	870 mm
Depth net	715 mm	715 mm	715 mm	715 mm
Internal Dimensions				
Interior width	560 mm	560 mm	560 mm	560 mm
Interior height	600 mm	600 mm	600 mm	600 mm
Interior depth	505 mm	505 mm	505 mm	505 mm
Inner doors	1	1	1	1
Unit doors	1	1	1	1
Environment-specific data				
Sound-pressure level	41 dB(A)	41 dB(A)	41 dB(A)	41 dB(A)
Energy consumption at 37°C	45 Wh/h	45 Wh/h	45 Wh/h	45 Wh/h
Fixtures				
Number of shelves (std./max.)	2/6	2/6	2/6	2/6

All technical data is specified for unloaded units with standard equipment at an ambient temperature of +22 °C ±3 °C and a power supply voltage fluctuation of ±10%. The temperature data is determined in accordance to BINDER factory standard following DIN 12880, observing the recommended wall clearances of 10 % of the height, width, and depth of the inner chamber. All indications are average values, typical for units produced in series. We reserve the right to change technical specifications at any time.

## DIMENSIONS Incl. fittings and connections [mm]



## OPTIONS

Designation	Description	CB-S 170	*	Art.-No.
Access port with silicone plug	back			
	30 mm	•	01	8612-0017
	left			
	30 mm	•	01	8612-0018
	right			
	30 mm	•	01	8612-0019

Designation	Description	CB-S 170	*	Art.-No.
Analog output 4-20 mA	for temperature and CO <sub>2</sub> values (outputs not adjustable)	•	02	8612-0016
Calibration certificate, expanded	for temperature; for extending the measurement in center of chamber to include another test temperature	•	-	8012-1112
	for temperature, measurement in center of chamber at specified temperature	•	-	8012-1131
	temperature measurement incl. certificate, 9 measuring points at specified temperature	•	-	8012-1549
	temperature measurement incl. certificate, 15- 18 measuring points at specified temperature	•	-	8012-1570
Calibration certificate, temperature	temperature measurement incl. certificate and 27 measuring points at specified temperature	•	-	8012-1591
	for temperature and CO <sub>2</sub> , temperature measurement in center of chamber, CO <sub>2</sub> measurement performed using test gas at 37 °C and 5 % CO <sub>2</sub>	•	-	8012-0228
Door hinged on the left	Unit door and standard glass inner door with door hinged on the left	•	-	8612-0020
Door lock	lockable door handle	•	-	8612-0021

## ACCESSORIES

Designation	Description	CB-S 170	*	Art.-No.
APT-COM™ 4 BASIC-Edition	for simple logging and documentation requirements with up to 5 networked units.			
	version 4, BASIC edition	•	-	9053-0039
APT-COM™ 4 GLP-Edition	for working under GLP-compliant conditions. Measured values are documented in a tamper-proof way in line with the requirements of FDA Regulation 21 CFR 11.			
	version 4, GLP edition	•	-	9053-0042
APT-COM™ 4 PROFESSIONAL-Edition	convenient unit and user management built on the BASIC edition. Suitable for networking up to 100 units.			
	version 4, PROFESSIONAL edition	•	-	9053-0040
Base	the base equipped with casters is used for the secure positioning and leveling of a BINDER CO <sub>2</sub> incubator	•	-	9051-0028
Cleaning kit	for equipment maintenance and disinfection, consisting of pH-neutral detergent (1000 g, concentrate), spray disinfectant (500 ml, ready-to-use solution), lint-free cleansing tissues, protective gloves, and protective glasses	•	-	8012-0503
Copper interior fittings	Set consisting of 2 shelves (all-copper) and a water pan (copper-plated)	•	-	8012-1997
Gas cylinder connection set	for CO <sub>2</sub> , consisting of a gas tank pressure regulator with connection parts and 5-meter hose	•	-	8012-0014
Gas tank changer	external, BINDER Gas Supply Service, for connecting 2 gas tanks (CO <sub>2</sub> , N <sub>2</sub> or O <sub>2</sub> ), with audible and visual alarms, as well as zero-voltage alarm output	•	-	8012-2344

Designation	Description	CB-S 170	*	Art.-No.
Qualification documents	IQ/OQ/PQ documents – supporting documents for validation performed by customers, according to customer requirements, PQ section added to qualification folder IQ/OQ; parameters: temperature, CO <sub>2</sub> , O <sub>2</sub> – or pressure, depending on unit			
	Digital in PDF format	•	-	7057-0005
	Hard copy inside folder	•	-	7007-0005
	IQ/OQ documents – supporting documents for validation performed by customers, consisting of: IQ/OQ checklists incl. calibration guide and comprehensive unit documentation; parameters: temperature, CO <sub>2</sub> , O <sub>2</sub> , pressure, depending on unit			
	Digital in PDF format	•	-	7057-0001
	Hard copy inside folder	•	-	7007-0001
Rubber pads	set anti-slip feet	•	-	8012-0702
Shaker „Universal“	Shaker and controller connected via ribbon cable, universally applicable, 100 – 240 V, 50/60 Hz	•	-	8012-1771
Shelf, perforated	Stainless steel	•	-	8012-2167
Stacking adapter	for the thermally isolated stacking of two BINDER CO <sub>2</sub> incubators	•	-	9051-0035
Stacking frame	stable, vibration-free stacking frame on casters with stop brake for safe stacking of two CB series units	•	-	9051-0040
pH-neutral detergent	concentrated, for gentle remove of residual contaminants; 1 kg	•	-	8012-2250

## SERVICES

Designation	Description	*	Art.-No.
<b>Calibration services</b>			
CO <sub>2</sub> calibration	CO <sub>2</sub> calibration at a specified value, measurements are taken with analyzed test gas at 5%, including certificate	–	DL30-0401
Calibration certificate, temperature	Calibration of one (1) test temperature specified by the user in center of chamber, including certificate	–	DL30-0101
	Extension of calibration of one (1) additional test temperature specified by the user in the center of the usable space, including certificate	–	DL30-0102
Temperature measurement, 9 measuring points	Temperature measurement with 9 measuring points with a set value specified by the user, including certificate	–	DL30-0109
Temperature measurement, 18 measuring points	Temperature measurement with 18 measuring points with a set value specified by the user, including certificate	–	DL30-0118
Temperature measurement, 27 measuring points	Temperature measurement with 27 measuring points with a set value specified by the user, including certificate	–	DL30-0127
<b>Installation services</b>			
Unit commissioning	Connect the unit to the customer-side connections (electricity, water, wastewater, gas), basic functions check, brief operating instructions. (excl.: unpacking, setup, controller instructions, programming, installation work)	–	DL10-0100
		–	DL10-0110

Designation	Description	*	Art.-No.
Unit instructions	Instruction regarding operating principle and basic functions of the unit, operation of the control electronics including programming	–	DL10-0500
		–	DL10-0510
<b>Maintenance contracts</b>			
BRONZE 3-year maintenance contract	Maintenance service as contractually agreed, visual inspection of mechanical and electrical components, check of control response, 20% discount on spare parts	–	DL20-0710
GOLD 3-year maintenance contract	Maintenance service as contractually agreed, visual inspection of mechanical and electrical components, check of control response, 20% discount on spare parts, testing of all key functions, replacement of wear parts, calibration of one temperature and CO <sub>2</sub> value, including certificate	–	DL20-0940
SILVER 3-year maintenance contract	Maintenance service as contractually agreed, visual inspection of mechanical and electrical components, check of control response, 20% discount on spare parts, testing of all key functions, calibration of one test temperature specified by the user in the center of the usable space, without certificate	–	DL20-0820
<b>Maintenance services</b>			
Maintenance	One-off maintenance service in accordance with maintenance schedule. Visual inspection of mechanical and electrical components, testing of all key functions. Calibration of a test temperature specified by the user in center of usable space without certificate	–	DL20-0400
		–	DL20-0440
<b>Validation services</b>			
Execution of IQ/OQ	Execution of IQ/OQ in accordance with qualification folder	–	DL41-0200
Execution of IQ/OQ/PQ	Execution of IQ/OQ/PQ in accordance with qualification folder	–	DL44-0500
<b>Warranty service</b>			
1-year warranty extension	The warranty is extended by 1 year from the delivery date, wear parts are excluded	–	DL50-0020

## NOTES

- 01 Condensation may occur in the area around the access port. Access ports may be placed in custom locations for an additional charge.
- 02 UL mark is not granted when this option is used.

### **BINDER GmbH**

Tuttlingen, Germany  
TEL +49 7462 2005 0  
FAX +49 7462 2005 100  
info@binder-world.com  
www.binder-world.com

### **BINDER Inc.**

Bohemia, NY, USA  
TEL +1 631 224 4340  
FAX +1 631 224 4354  
usa@binder-world.com  
www.binder-world.us

### **BINDER Environmental Testing Equipment (Shanghai) Co., Ltd.**

Shanghai, P.R. China  
TEL +86 21 685 808 25  
FAX +86 21 685 808 29  
china@binder-world.com  
www.binder-world.com

### **BINDER Asia Pacific (Hong Kong) Ltd.**

Kowloon, Hong Kong, P.R. China  
TEL +852 39070500  
FAX +852 39070507  
asia@binder-world.com  
www.binder-world.com