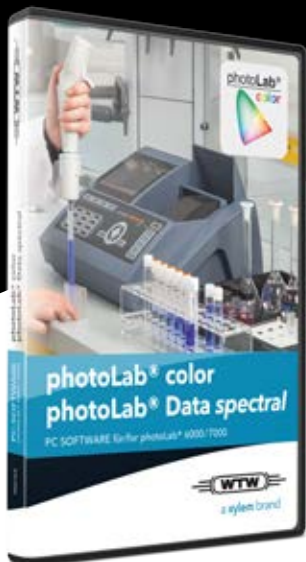




photoLab® color photoLab® Data *spectral*

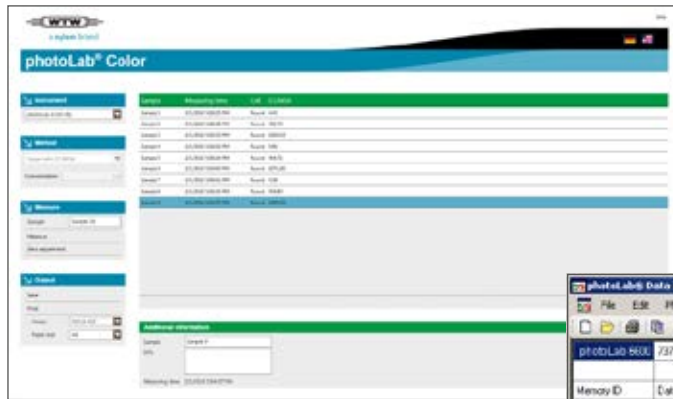
PC SOFTWARE FOR SPECTROPHOTOMETER SERIES photoLab® 7000 AND 6000



a xylem brand

photoLab® color + photoLab® Data spectral

The PC software for photoLab® 7000/6000 Series consists in two individual modules offering a powerful photo-metric color measurement (CIE, Gardner, Yellowness...) and a GLP-compliant data management.



Intuitive user-interface for easy color measurement and data management

- PC-triggered color measurement
- Intuitive user interface
- Easy data management and output
- GLP-compliant

Memory ID	Date/Time	Value ID	User	Method	Cell	Value	Unit	Cation
268	5/23/2008 13:23:24	AutoScore		33_14690	16 mm	402	mg/l	CO3
267	5/23/2008 13:23:10	AutoScore		33_14690	16 mm	403	mg/l	CO3
266	5/23/2008 8:45:43	AutoScore		3_A6/25	16 mm	0.89	mg/l	NH4N
265	5/24/2008 16:29:25	AutoScore		59_14542	16 mm	----	mg/l	NO3N
264	5/24/2008 16:29:16	AutoScore		59_14542	16 mm	----	mg/l	NO3N
263	5/24/2008 16:28:38	AutoScore		103_14662	16 mm	----	mg/l	K
262	5/24/2008 16:28:18	AutoScore		103_14662	16 mm	----	mg/l	K
261	5/24/2008 16:22:37	AutoScore		59_14542	16 mm	19.8	mg/l	NO3N
260	5/24/2008 16:22:12	AutoScore		59_14542	16 mm	15.8	mg/l	NO3N
259	5/24/2008 16:21:56	AutoScore		59_14542	16 mm	15.9	mg/l	NO3N
258	5/24/2008 16:21:37	AutoScore		59_14542	16 mm	14.9	mg/l	NO3N
257	5/24/2008 13:07:46	AutoScore		95_14730	16 mm	0.125	mg/l	Cl
256	5/23/2008 13:07:25	AutoScore		95_14730	16 mm	3	mg/l	Cl
255	5/23/2008 9:26:53	AutoScore		95_14730	16 mm	1	mg/l	Cl

System requirements

Windows 7, Windows 8, Windows 10

photoLab® color:

Color measurement instead of color perception

- CIE color measurement: XYZ, x,y,z, CIE-L* a* b*, CIE-L* u* v*,
- Hazen (Pt-Co)
- Yellowness-Index
- ADMI color number
- ASTM
- Gardner
- Sugar color ICUMSA
- Beer color according to EBC and ASBC
- Iodine color number

photoLab® Data spectral:

Data management for the photoLab® 7000/6000 Series

- Data management according to GLP with instrument ID and user administration.
- Data transfer from the photometer to the PC for further processing (i.e. LIMS, XLS, CSV).
- Export of spectra into specialized software for standard display and processing of spectra.
- Synchronization of methods, profiles and software updates on several photometers.

Ordering Information

Model	Description	Order no.
photoLab® Data spectral+ photoLab® color	PC software for photoLab® 7000/6000 Serie: Color measurement and data management	902 763



Xylem Analytics Germany Sales GmbH & Co. KG, WTW · Dr.-Karl-Slevogt-Straße 1 · D-82362 Weilheim · Germany
Phone: +49 881 183-0 · Fax: +49 881 183-420 · E-Mail: Info.WTW@Xylem.com · www.WTW.com

All names are registered tradenames or trademarks of Xylem Inc. or one of its subsidiaries. Technical changes reserved.
© 2017 Xylem Analytics Germany Sales GmbH & Co. KG. 999178US December 2017

