



2018 PRODUCT GUIDE

LIQUID HANDLING • EXTRACTION • PURIFICATION • AUTOMATED SOLUTIONS • SERVICES



PIPETTE SELECTION GUIDE

Our guide helps you choose the right pipette for your specific application. Whether comfort, throughput or budget is your main priority, our range of pipettes and instruments guarantee the ultimate performance and reliability of your results.

Pipette Selection Guide					
	Description	Throughput	Comfort	Features	Page
Single Channel Air Displacement Pipettes	PIPETMAN M 	Medium to high	✓✓✓✓✓	Electronic Pipette, Guaranteed Performance For enhanced productivity and comfort with guaranteed performance in standard and repetitive modes.	4, 5
	PIPETMAN L 	Low to medium	✓✓✓✓✓	Low forces, Lightweight, Lockable Volume Superior all-day comfort. Volume locking system for secure pipetting. PIPETMAN L FIXED available.	6, 7
	PIPETMAN G 	Low to medium	✓✓✓✓	Extremely Low Pipetting Forces Ergonomic and easy to use with premium comfort and performance.	8
	PIPETMAN CLASSIC 	Low	✓✓	Reliable, Accurate and Cost Effective The original, world-renowned pipetting standard. PIPETMAN Fixed volume also available.	8
Multichannel Pipettes	PIPETMAN M MULTI 	Medium to high	✓✓✓✓✓	Motorised Multichannel, Ultimate Consistency Provides high throughput flexibility with simplest functionality and guaranteed performance.	4, 5
	PIPETMAN L MULTI 	Medium to high	✓✓✓✓✓	Ergonomic, Lightweight Multichannel With lockable features for demanding pipetting routines.	6, 7
Specialty Pipettes	MICROMAN E 	Low	✓✓✓✓	Ergonomic Pipette for Problem Liquids Enhanced new body for the highest precision and comfort for viscous and volatile samples.	18, 19
Highest Throughput	PLATEMASTER 	Hight	✓✓✓✓✓	Manual 96 Channel Pipetting Simple and accurate, high throughput pipetting for 96- and 384-well plates.	12
	PIPETMAX 	Hight	✓✓✓✓✓	Affordable Automation Easy-to-use, automated liquid handling platform for reliable sample prep.	10, 11

WELCOME TO GILSON

ELECTRONIC PIPETTES

PIPETMAN® M4

MECHANICAL PIPETTES

PIPETMAN® L6

PIPETMAN® Classic & PIPETMAN® G 8

HIGH THROUGHPUT PIPETTING

PIPETMAX®10

PLATEMASTER® 12

PIPETTE ACCESSORIES

Pipette Accessories 13

PIPETMAN TIPS

PIPETMAN Tips® Intro 14

PIPETMAN Tips® Guide 16

SPECIALITY PIPETTES

MICROMAN® E & Capillary Pistons 18

REPETMAN® & REPET-TIPS20

DISTRIMAN® & DISTRITIPS® 21

BENCHTOP SOLUTIONS

MACROMAN™ 22

DISPENSMAN® 23

TRACKMAN® 24

GmCLab 25

MINIPULS® & MINIPULS Tubing 28

EXTRACTMAN®30

ASPEC® SPE Systems 31

VERITY® Purification Systems 32

PIPETTE SERVICE

ISO 17025 & Gilson Pipettes 34



pipetman®

M

GUARANTEED TO PERFORM WITH OUTSTANDING ACCURACY

PIPETMAN® M combines the simplicity of a mechanical pipette with the consistency of electronic liquid handling. The PIPETMAN M range has been designed for guaranteed accuracy and precision in both standard and repetitive pipetting modes for reliable sample preparation.



Pipette With Less Effort & More Comfort

Simple-to-use, motorized pipette — two button-operation.

Lightweight and perfectly balanced with virtually zero pipetting forces for hours of pipetting comfort.

Ultimate Consistency

Reproducibility is key in research. With PIPETMAN M you can feel confident that variability among users is minimized.

Ultimate Control

With a streamlined user interface, five pipetting modes, control of your sample prep is at your fingertips. Switch into custom mode to create a new protocol. Save and transfer your protocol securely into PIPETMAN M Software for recall at a later date.

Save time and benefit from absolute consistency in volume distribution across each channel with PIPETMAN M multichannel electronic pipettes.



PIPETMAN M SINGLE CHANNEL — VARIABLE VOLUME MODELS												
Model	PIPETMAN DIAMOND Tips		Part Number	Gilson Specifications				REPETITIVE mode volume				
				Standard PIPET mode								
				Volume Range	Volume (µL)	Systematic error (µL)	Random error (µL)					
P10M	D10 DL10	DF10 DFL10	F81022	0.5 - 10 µL	0.5 1 5 10	± 0.040 ± 0.025 ± 0.060 ± 0.080	≤ 0.013 ≤ 0.012 ≤ 0.020 ≤ 0.025	0.5 - 10 µL				
				P20M	D200	DF30	F81023		2 - 20 µL	2 10 20	± 0.075 ± 0.100 ± 0.150	≤ 0.025 ≤ 0.035 ≤ 0.050
									P100M	D200	D100	F81013
P200M	D200 D300	DF200 DF300	F81024	20 - 200 µL	20 100 200	± 0.40 ± 0.80 ± 1.00	≤ 0.15 ≤ 0.22 ≤ 0.26					
				P300M	D200 D300	DF200 DF300	F81014	20 - 300 µL	20 30 150 300	± 0.80 ± 0.70 ± 0.90 ± 1.05	≤ 0.16 ≤ 0.20 ≤ 0.23 ≤ 0.30	
P1200M	D1000 D1200	DF1000 DF1200	F81015					100 - 1200 µL	100 120 600 1200	± 2.5 ± 2.4 ± 3.6 ± 6.0	≤ 0.4 ≤ 0.4 ≤ 0.8 ≤ 1.2	
				P5000M	D5000	F81016	500 - 5000 µL	500 2500 5000	± 10 ± 15 ± 25	≤ 2 ≤ 4 ≤ 7		
P10mLM	D10mL	F81017	1 - 10 mL				1 mL 5 mL 10 mL	± 25 ± 30 ± 50	≤ 4 ≤ 8 ≤ 12			
			PIPETMAN M MULTICHANNEL									
P8x10M	D10 DL10	DF10 DFL10	F81025	0.5 - 10 µL	0.5 1 5 10	± 0.05 ± 0.04 ± 0.08 ± 0.10	≤ 0.02 ≤ 0.02 ≤ 0.04 ≤ 0.06	0.5 - 10 µL				
			F81026									
P8x20M	DL10 D200	DFL10 DF30	F81027	1 - 20 µL	1 2 10 20	± 0.08 ± 0.09 ± 0.15 ± 0.25	≤ 0.05 ≤ 0.06 ≤ 0.10 ≤ 0.12	1 - 20 µL				
			F81028									
P8x100M	D200	DF100	F81018	10 - 100 µL	10 50 100	± 0.25 ± 0.50 ± 0.80	≤ 0.14 ≤ 0.20 ≤ 0.25	5 - 100 µL				
			F81019									
P8x200M	D200 D300	DF100 DF200 DF300	F81029	20 - 200 µL	20 100 200	± 0.50 ± 1.00 ± 2.00	≤ 0.16 ≤ 0.30 ≤ 0.50	5 - 200 µL				
			F81030									
P8x300M	D200 D300	DF200 DF300	F81031	10 - 300 µL	10 30 150 300	± 1.00 ± 1.00 ± 1.50 ± 2.40	≤ 0.18 ≤ 0.18 ≤ 0.375 ≤ 0.45	10 - 300 µL				
			F81032									
P8x1200M	D1200	DF1200	F81020	50 - 1200 µL	50 120 600 1200	± 4.0 ± 4.0 ± 6.0 ± 9.6	≤ 0.7 ≤ 0.7 ≤ 1.5 ≤ 1.8	50 - 1200 µL				
			F81021									

Gilson maximum permissible errors are guaranteed only when PIPETMAN pipettes are used with the recommended PIPETMAN DIAMOND Tips. Visit www.gilson.com/en/guaranteedperformance.

Under these conditions: Gilson volumetric specifications in standard pipetting (PIPET mode) are guaranteed with a performance exceeding ISO 8655-2 recommendations for this mode. / In the absence of ISO recommendations for repetitive pipetting mode for air-displacement pipettes, Gilson volumetric specifications for repetitive pipetting (REPETITIVE mode) are guaranteed within ISO 8655-2 recommendations for standard pipetting (Cf. ISO 8655-2 table 1).

EMPOWER YOUR PIPETMAN M

Accessories	Part Number
PIPETMAN M Power Carousel	F81001
PIPETMAN M Stand Adaptor	F807023

For our full range of pipette accessories, see page 13.



 **GILSON®**



pipetman®

L

INCREASE PRODUCTIVITY WITHOUT SACRIFICING COMFORT

PIPETMAN® L is the latest innovation from Gilson and is based on ergonomics, comfort and traceability research. This mechanical pipette combines the legendary robustness of the PIPETMAN Classic, a newly designed body and state of the art mechanism.

All Day Pipetting Comfort

Balance is key to a comfortable pipette. PIPETMAN L has the ideal weight, handle shape and tip ejection to maximize just that.

Secure Pipetting

PIPETMAN L features a true volume-locking mechanism to guarantee no accidental volume change during pipetting cycles, which could alter accuracy and precision.

Every aspect of the PIPETMAN L has been designed with your hand in mind to help increase daily productivity and pipette longer without fatiguing your hand.

PIPETMAN L multichannel models offer optimized performance across channels for a uniform sample delivery.



PIPETMAN L is also available as a **fixed volume** pipette.



PIPETMAN L SINGLE CHANNEL – VARIABLE VOLUME MODELS									
Model	PIPETMAN DIAMOND Tips		Part Number		Volume (µL)	Maximum Permissible Errors			
						Gilson		ISO 8655	
			With stainless steel ejector	With plastic ejector		Systematic error (µL)	Random error (µL)	Systematic error (µL)	Random error (µL)
P2L	D10 DL10	DF10 DFL10	FA10001M	FA10001P	0.2	± 0.024	≤ 0.012	± 0.08	≤ 0.04
					0.5	± 0.025	≤ 0.012	± 0.08	≤ 0.04
					1	± 0.027	≤ 0.013	± 0.08	≤ 0.04
					2	± 0.030	≤ 0.014	± 0.08	≤ 0.04
P10L*	D10 DL10	DF10 DFL10	FA10002M	FA10002P	1	± 0.025	≤ 0.012	± 0.12	≤ 0.08
					5	± 0.075	≤ 0.030	± 0.12	≤ 0.08
					10	± 0.100	≤ 0.040	± 0.12	≤ 0.08
P20L	D200	DF30	FA10003M	FA10003P	2	± 0.10	≤ 0.030	± 0.2	≤ 0.1
					10	± 0.10	≤ 0.050	± 0.2	≤ 0.1
					20	± 0.20	≤ 0.060	± 0.2	≤ 0.1
P100L	D200	DF100	FA10004M	FA10004P	10	± 0.35	≤ 0.10	± 0.8	≤ 0.3
					50	± 0.40	≤ 0.12	± 0.8	≤ 0.3
					100	± 0.80	≤ 0.15	± 0.8	≤ 0.3
P200L	D200 D300	DF200 DF300	FA10005M	FA10005P	20	± 0.50	≤ 0.20	± 1.6	≤ 0.6
					100	± 0.80	≤ 0.25	± 1.6	≤ 0.6
					200	± 1.60	≤ 0.30	± 1.6	≤ 0.6
P1000L	D1000 D1200	DF1000 DF1200	FA10006M	FA10006P	100	± 3.0	≤ 0.6	± 8.0	≤ 3.0
					500	± 4.0	≤ 1.0	± 8.0	≤ 3.0
					1000	± 8.0	≤ 1.5	± 8.0	≤ 3.0
P5000L	D5000		FA10007**		500	± 12	≤ 3	± 40	≤ 15.0
					2500	± 15	≤ 5	± 40	≤ 15.0
					5000	± 30	≤ 8	± 40	≤ 15.0
P10mLL	D10mL		FA10008**		1000	± 30	≤ 6	± 60	≤ 30.0
					5000	± 40	≤ 10	± 60	≤ 30.0
					10000	± 60	≤ 16	± 60	≤ 30.0
PIPETMAN L MULTICHANNEL									
P8x10L	D10 DL10	DF10 DFL10	FA10013		0.5	± 0.08	≤ 0.04	± 0.24	≤ 0.16
					1	± 0.08	≤ 0.05	± 0.24	≤ 0.16
					5	± 0.20	≤ 0.10	± 0.24	≤ 0.16
P12x10L	DL10 D200	DFL10 DF30	FA10014		10	± 0.20	≤ 0.10	± 0.24	≤ 0.16
					2	± 0.10	≤ 0.08	± 0.4	≤ 0.20
					10	± 0.20	≤ 0.10	± 0.4	≤ 0.20
P8x20L	DL10 D200	DFL10 DF30	FA10009		20	± 0.10	≤ 0.08	± 0.4	≤ 0.20
					10	± 0.20	≤ 0.10	± 0.4	≤ 0.20
					20	± 0.40	≤ 0.15	± 0.4	≤ 0.20
P8x200L	D200 D300	DF200 DF300	FA10011		20	± 0.50	≤ 0.25	± 3.2	≤ 1.2
					100	± 1.00	≤ 0.40	± 3.2	≤ 1.2
					200	± 2.00	≤ 0.50	± 3.2	≤ 1.2
P8x300L	D200 D300	DF200 DF300	FA10015		20	± 1.00	≤ 0.35	± 8.0	≤ 3.0
					30	± 1.00	≤ 0.35	± 8.0	≤ 3.0
					150	± 1.50	≤ 0.60	± 8.0	≤ 3.0
P12x300L	D300	DF300	FA10016		300	± 3.00	≤ 1.00	± 8.0	≤ 3.0

* P10L model can be used up to 0.5 µL.

** P5000L and P10mLL do not have tip ejectors.

For a pipette with a plastic tip ejector, the part number ends with the letter P.

For a pipette with a stainless steel tip ejector, the part number is ends with the letter M.

Gilson maximum permissible errors are guaranteed only when PIPETMAN pipettes are used with the recommended PIPETMAN DIAMOND Tips.

PIPETMAN L KITS

Model	Part Number	PIPETMAN L Model	PIPETMAN DIAMOND Tips	Accessories
PIPETMAN L Starter Kit	F167350	P20L P200L P1000L	D1000	3 SINGLE™ pipette holders 3 plastic ejectors 1 Gilson Guide to Pipetting 1 Two-minute inspection poster
PIPETMAN L Micro-volume Kit	F167550	P2L P10L P100L	DL10 D200	3 SINGLE™ pipette holders 3 plastic ejectors 1 Gilson Guide to Pipetting 1 Two-minute inspection poster
PIPETMAN L 4-pipette Kit	F167370	P2L P20L P200L P1000L	DL10 D200 D1000	4 SINGLE™ pipette holders 1 Gilson Guide to Pipetting 1 Two-minute inspection poster





pipetman®

CLASSIC

THE WORLD PIPETTING STANDARD

Legendary Performance

PIPETMAN® Classic's accuracy and precision has become the benchmark for pipetting excellence.

Premium Robustness

Built to last, many laboratories are happily using PIPETMAN Classic pipettes that are over ten years old.

pipetman®

G

PREMIUM PIPETTING COMFORT

Pipetting Comfort

Offers one of the lowest pipetting forces available on the market for hours of comfortable pipetting.

Reliable Results

Offers Gilson's legendary accuracy, precision and performance with the highest comfort.

Robust and Flexible

Available with plastic or stainless steel ejectors.

Plastic ejector recommended for working with corrosive samples.

Add the new **PIPETMAN Comfort Handle** for an even better grip and to help reduce pipetting fatigue (page 13).

For any information about **PIPETMAN Neo**, please contact your Gilson representative.



PIPETMAN CLASSIC AND PIPETMAN G SINGLE CHANNEL									
Model	PIPETMAN DIAMOND Tips*		Part Number		Volume (µL)	Maximum Permissible Errors			
			With stainless steel ejector	With plastic ejector		Gilson		ISO 8655	
						Systematic error (µL)	Random error (µL)	Systematic error (µL)	Random error (µL)
P2 P2G	D10 DL10	DF10 DFL10	F144801 F144054M	- F144054P	0.2 0.5 2	± 0.024 ± 0.025 ± 0.030	≤ 0.012 ≤ 0.012 ≤ 0.014	± 0.08 ± 0.08 ± 0.08	≤ 0.04 ≤ 0.04 ≤ 0.04
P10 P10G*	D10 DL10	DF10 DFL10	F144802 F144055M	- F144055P	1 5 10	± 0.025 ± 0.075 ± 0.100	≤ 0.012 ≤ 0.030 ≤ 0.040	± 0.12 ± 0.12 ± 0.12	≤ 0.08 ≤ 0.08 ≤ 0.08
P20 P20G	D200	DF30	F123600 F144056M	- F144056P	2 10 20	± 0.10 ± 0.10 ± 0.20	≤ 0.030 ≤ 0.050 ≤ 0.060	± 0.2 ± 0.2 ± 0.2	≤ 0.1 ≤ 0.1 ≤ 0.1
P100 P100G	D200	DF100	F123615 F144057M	- F144057P	10 / 20 50 100	± 0.35 ± 0.40 ± 0.80	≤ 0.10 ≤ 0.12 ≤ 0.15	± 0.8 ± 0.8 ± 0.8	≤ 0.3 ≤ 0.3 ≤ 0.3
P200 P200G	D200 D300	DF200 DF300	F123601 F144058M	- F144058P	20 / 50 100 200	± 0.50 ± 0.80 ± 1.60	≤ 0.20 ≤ 0.25 ≤ 0.30	± 1.6 ± 1.6 ± 1.6	≤ 0.6 ≤ 0.6 ≤ 0.6
P1000 P1000G	D1000 D1200	DF1000 DF1200	F123602 F144059M	- F144059P	100 / 200 500 1000	± 3.0 ± 4.0 ± 8.0	≤ 0.6 ≤ 1.0 ≤ 1.5	± 8.0 ± 8.0 ± 8.0	≤ 3.0 ≤ 3.0 ≤ 3.0
P5000 P5000G**	D5000		F123603 F144066		500 / 1000 2500 5000	± 12 ± 15 ± 30	≤ 3 ≤ 5 ≤ 8	± 40 ± 40 ± 40	≤ 15.0 ≤ 15.0 ≤ 15.0
P10mL P10mLG**	D10mL		F161201 F144067		1000 5000 10000	± 30 ± 40 ± 60	≤ 6 ≤ 10 ≤ 16	± 60 ± 60 ± 60	≤ 30.0 ≤ 30.0 ≤ 30.0

Gilson maximum permissible errors are guaranteed only when PIPETMAN pipettes are used with the recommended PIPETMAN DIAMOND Tips.

Information in blue is only for PIPETMAN Classic. Information in green is only for PIPETMAN G.

* P10G model can be used up to 0.5 µL.

** P5000G and P10mLG do not have tip ejectors.

PIPETMAN KITS

Model	Part Number	PIPETMAN Models	PIPETMAN DIAMOND Tips	Accessories
PIPETMAN Classic Starter Kit	F167300	P20 P200 P1000	D200 D1000	3 SINGLE™ pipette holders 1 Gilson Guide to Pipetting
PIPETMAN Classic Micro-volume Kit	F167500	P2 P10 P100	DF10 D200	3 SINGLE™ pipette holders 1 Gilson Guide to Pipetting
PIPETMAN Classic Large-Volume Kit	F167400	P5000 P10mL	-	2 x 10 Protection Filters
PIPETMAN Classic 4-pipette Kit	F167380	P2 P20 P200 P1000	DL10 D200 D1000	4 SINGLE™ pipette holders 4 PIPETMAN Comfort Handles 1 Gilson Guide to Pipetting 1 Two-minute inspection poster
PIPETMAN G Starter Kit	F167900	P20G P200G P1000G	D200 D1000	3 SINGLE™ pipette holders 3 plastic ejectors 3 PIPETMAN Comfort Handles 1 Gilson Guide to Pipetting 1 Two-minute inspection poster
PIPETMAN G Micro-volume Kit	F167800	P2G P10G P100G	DL10 D200	3 SINGLE™ pipette holders 3 plastic ejectors 1 Gilson Guide to Pipetting 1 Two-minute inspection poster
PIPETMAN G 4-pipette Kit	F167360	P2G P20G P200G P1000G	DL10 D200 D1000	4 SINGLE™ pipette holders 1 Gilson Guide to Pipetting 1 Two-minute inspection poster



pipetmax[®]

MAXIMISE REPRODUCIBILITY OF YOUR BIOLOGICAL SAMPLE PREP

PIPETMAX

Increase reproducibility and the pace of your experiments with this easy-to-use, **affordable**, automated liquid handling platform.



Upgrade To Automation For Reliable, Accurate Pipetting

Protect your important samples from procedural errors and maximise accuracy and precision with fully automated pipetting protocols and PIPETMAN technology.

Free Yourself From Tedious Sample Prep Work

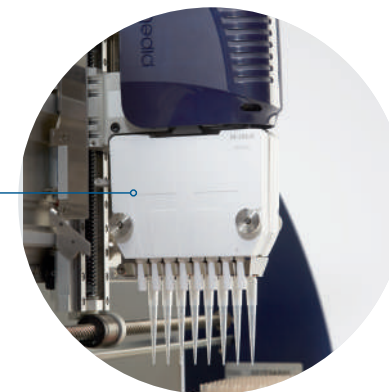
Let PIPETMAX prepare samples for you! Enjoy more freedom away from the bench and focus on what's important — your next discovery.

Stay Flexible - For Now And For The Future

Use any reagent, any kit and adapt your pipetting protocols to meet the unique needs of your research.

PIPETMAN Inside

With PIPETMAN inside, you can trust your pipetting to be reliable and consistent — plate to plate, lot to lot, time after time.



Exchangeable Heads, Removable Tray

Hardware can be customised to suit your methods and the pipette heads can be calibrated like a PIPETMAN.

No More User Variation

Free yourself from tedious pipetting jobs and free your results from inconsistencies due to pipetting errors.

A Truly Open System: Use Any Reagent, Any Protocol

Configure and customise your run using any reagent and any protocol you want. The hardware and software are built to be customisable.

PIPETMAX	
Pipette Head Options	8 channel 1 µL - 20 µL, 8 channel 20 µL - 200 µL, Single channel 1000 µL
Pipette Head Mounts	2 PIPETMAX pipetting heads
Bed Capacity	9 standard microplate positions
Labware Compatibility	Standard shallow- and deep-well microplates and microcentrifuge tubes
Instrument Dimensions	24.8" x 21.0" x 20.7" (with cover), 24.8" x 20.0" x 19.0" (without cover)
Operational Air Temperature	4°C - 40°C

APPLICATION VERSATILITY

PIPETMAX stops you from being tied down by routine pipetting tasks and can run a multitude of different applications and protocols.

- qPCR
- ELISA
- Cells Based Assays
- Protein Assays
- Enzymatic Reactions
- PCR
- Kinase Assays
- NGS Library Preparation
- Custom LH
- Agencourt[®] AMPure[®] XP PCR kits
- Illumina Nextera[®] XT System DNA Library Preps for MiSeq[®]
- Promega GoTaq[®] Amplification Probe1 Step RT-qPCR
- Promega GoTaq[®] PCR Core System

Download App Notes at www.gilson.com/pipetmax





FAST MANUAL MICROPLATE PIPETTING



Save Time And Increase Your Productivity

With minimal setup you can fill 96- or 384- well plates in less than one minute by reducing the number of manipulations for filling a microplate.

Simplifies Sample Prep

PLATEMASTER® requires no programming, no power and minimal training, so you can start pipetting right away.

Convenient For Any Microplate Application

From plate transfers to supernatant, achieve accuracy and precision on the bench or under the hood.

PLATEMASTER is an amazingly easy-to-use, accurate solution for high throughput pipetting of 96- and 384-well microplates.

PLATEMASTER	
PLATEMASTER P20 (F110761)	0.5 µL - 20 µL Adjustable in 0.1 µL increments
PLATEMASTER P220 (F110762)	2 µL - 220 µL Adjustable in 1 µL increments
Dimensions	300 mm x 450 mm x 400 mm (W x L x H)
Weight	16 kg

PLATEMASTER ACCESSORIES	
Description	Part Number
F1077602	384-well adapter, positioned done by wheel.
F1077603	384-well adapter, positioned done by hand.
F1077604	Alu-heater block for PLATEMASTER®, 96 x 0.2 mL, for PCR tubes, stripes & PCR plates Ø 7.8 mm
F1077605	Pipetting head height adjusters (2 units)
F1077606	Lubrication box of O-rings PLATEMASTER®

PIPETTE ACCESSORIES

CARROUSEL™ Pipette Stand

- Protects pipettes from shocks and contamination.
- Holds up to seven Gilson pipettes for space saving.



Power CARROUSEL™

- PIPETMAN M charging stand.
- Charge up to 5 at once in one hour.
- Keeps your PIPETMAN M always operational.



Single™ Pipette Holder

- Holds your single or multichannel PIPETMAN.
- Sticks to any smooth, dry surface.
- Prevents liquid from running inside shaft.



Trio™ Pipette Stand

- Safely stores and protects three PIPETMAN.
- Helps organise your workbench.



Universal Multichannel Stand

- Holds any brand of 8 or 12 channel pipette securely.
- Compact design for space savings.



Gilson Reagent Reservoirs

- Disposable, ideal for dispensing reagent with multichannel pipettes.
- 25 mL and 50 mL available.



PIPETMAN COMFORT HANDLE

- Clips on to PIPETMAN Classic, Neo and G models.
- Reduces the force needed to grip the pipette for maximum comfort.



Coloris™ Identification Clips

- Identify or personalise your PIPETMAN.
- Write your name or application to avoid mix-ups and then snap into place.



JIMMY™ Microtube Opener

- Clips on to pipette.
- Increases pipetting efficiency.
- Lessens the fatigue associated with manual tube opening.



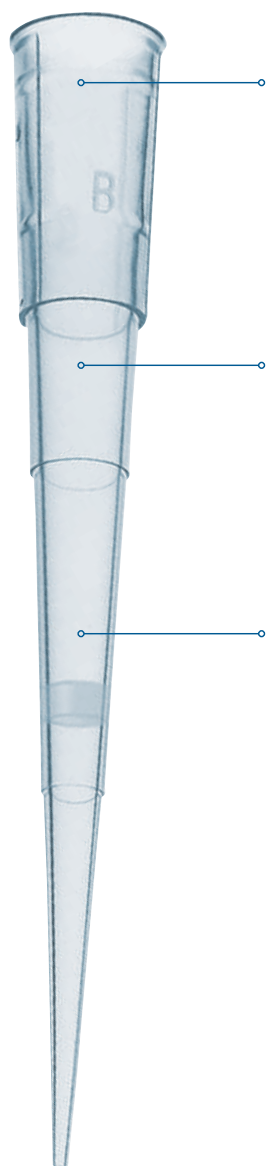
PIPETMAN ACCESSORIES	
Description	Part Number
Carrousel, stand for 7 pipettes	F161401
Power Carrousel	FB1001
Single pipette holder	F161406
Trio, stand for 3 pipettes	F161405
Universal Multichannel Stand	F161417
Reagent Reservoir 25 mL, 100	F267660
Reagent Reservoir 50 mL, 100	F267670
COMFORT HANDLE pack of 3, blue	F161486
COMFORT HANDLE pack of 50, blue	F161485
COMFORT HANDLE pack of 3, white	F161488
COMFORT HANDLE pack of 50, white	F161487
COMFORT HANDLE stickers, 120	F161499
10 Coloris clips, mixed colours	F161301
10 Coloris clips, red	F161302
10 Coloris clips, yellow	F161303
10 Coloris clips, green	F161304
10 Coloris clips, blue	F161305
10 Coloris clips, white	F161306
The JIMMY Microtube Opener	F144983



pipetman®

DIAMOND TIPS

HIGHEST QUALITY TIPS FOR SUPERIOR RESULTS



Guarantee Your PIPETMAN Results

PIPETMAN DIAMOND® Tips are designed to fit your PIPETMAN perfectly. Only by using PIPETMAN DIAMOND Tips in conjunction with your Gilson pipette can you guarantee the maximum accuracy and precision.

Affordable And Versatile For Every Application

Your needs, budget and tip consumption vary according to your specific research activity. With our extensive range of packaging, every lab can afford the highest quality PIPETMAN Tips for every application.

Contamination-Free

Our tips are made of the highest grade material within a fully traceable, clean room environment, ensuring they offer low retention and are free of contaminants that can alter your experiments. From mould to bench, they are guaranteed, certified and traceable to meet the most stringent demands in many applications.

Also available are **PIPETMAN Filter Tips** offering total protection against aerosol contamination and **Sterilised PIPETMAN Tips**, which are gamma irradiated and certified free of DNA, RNA, RNases, DNases, ATP proteases and trace metals.

WIDE RANGE OF TIP PACKAGING

BLISTER REFILL

- Individually wrapped racks of tips that are convenient, clean and eco-friendly.
- Ready to use, just peel the lid and insert into the empty box.
- Uses 45% less plastic than regular rack box.
- Fully autoclavable, available as sterilised and filter tips.



RELOAD PACK

- Quickest way to reload empty box.
- Uses 70% less plastic, recyclable packaging is eco-friendly.
- Easy to store, takes up less bench space.
- Affordable and convenient.
- Fully autoclavable.



TIPACK RACKED TIPS

- New design is more compact, convenient, ergonomic and eco-friendly.
- Patented ROCKY RACK system and hinged 180° angled lid makes it extremely easy to fit tips on multichannel pipettes.
- Fully autoclavable, available as sterilised and filter tips.



TOWERPACK

- A quick, easy and affordable rack refill system.
- Uses 60% less space on your bench and 70% less plastic than regular rack box.
- Whole range of TOWERPACK fits the amazingly easy-to-use universal reload box.
- One-hand system operation.
- Fully autoclavable, available sterilised.



EASYPACK & ECOPACK

- Purchase in bulk and save money by simply reloading these tips into empty racks.
- Bags are sealed with rapid-sealing strip for easy access and to prevent contamination.
- Minimal waste.
- Fully autoclavable.
- EASYPACK: 5 bags x 200 tips.
- ECOPACK: 10 bags x 1000 tips.



STERILPACK

- Individually wrapped sterilised tips.
- Complete protection from contaminants up to the moment of use.
- Wrapped in medical device quality plastic.
- Sterilisation guaranteed for 5 years.
- 400 individually wrapped sterilised tips.





STANDARD PIPETMAN DIAMOND TIPS						
	Description	Volume Range	Tip Length	Qty/Pack	Autoclavable Tips	Sterilised Tips
					Part Number	Part Number
RELOAD	DL10 RELOAD PACK	0.1 - 20 µL	45 mm	960	F167012	-
	D200 RELOAD PACK	2 - 200 µL	51 mm	960	F167013	-
	D1000 RELOAD PACK	100 - 1000 µL	66 mm	576	F167014	-
BLISTER	DL10 BLISTER REFILL	0.1 - 20 µL	45 mm	960	F172200	F172201
	D200 BLISTER REFILL	2 - 200 µL	51 mm	960	F172300	F172301
	D300 BLISTER REFILL	10 - 300 µL	51 mm	960	F172400	F172401
	D1000 BLISTER REFILL	100 - 1000 µL	66mm	960	F172500	F172501
TIPACK	D10 TIPACK	0.1 - 10 µL	30 mm	960	F171100	F171101
	DL10 TIPACK	0.1 - 20 µL	45 mm	960	F171200	F171201
	D200 TIPACK	2 - 200 µL	51 mm	960	F171300	F171301
	D300 TIPACK	10 - 300 µL	51 mm	960	F171400	F171401
	D1000 TIPACK	100 - 1000 µL	66 mm	960	F171500	F171501
	D1200 TIPACK	100 - 1200 µL	84 mm	960	F171600	F171601
	D5000 TIPACK	0.5 - 5 mL	10.4 cm	600	F161370	-
TOWERPACK	D10mL TIPACK	1 - 10 mL	16 cm	240	F161230	-
	D10 TOWERPACK	0.1 - 10 µL	30 mm	960	F167101	F167201
	DL10 TOWERPACK	0.1 - 20 µL	45 mm	960	F167102	F167202
	D200 TOWERPACK	2 - 200 µL	51 mm	960	F167103	F167203
ECOPACK	D300 TOWERPACK	10 - 300 µL	51 mm	960	F167105	F167205
	D1000 TOWERPACK	100 - 1000 µL	66 mm	672	F167104	F167204
	D10 ECOPACK	0.1 - 10 µL	30 mm	10,000	F161630	-
	DL10 ECOPACK	0.1 - 20 µL	45 mm	10,000	F161450	-
EASYPACK	D200 ECOPACK	2 - 200 µL	51 mm	10,000	F161930	-
	D300 ECOPACK	10 - 300 µL	51 mm	10,000	F161730	-
	D1000 ECOPACK	100 - 1000 µL	66 mm	10,000	F161670	-
	D1200 ECOPACK	100 - 1200 µL	84 mm	10,000	F161110	-
STERIL	D10 EASYPACK (5 bags of 200)	0.1 - 10 µL	30 mm	1,000	F161631	-
	DL10 EASYPACK (5 bags of 200)	0.1 - 20 µL	45 mm	1,000	F161451	-
	D200 EASYPACK (5 bags of 200)	2 - 200 µL	51 mm	1,000	F161931	-
	D300 EASYPACK (5 bags of 200)	10 - 300 µL	51 mm	1,000	F161731	-
	D1000 EASYPACK (5 bags of 200)	100 - 1000 µL	66 mm	1,000	F161671	-
	D1200 EASYPACK (5 bags of 200)	100 - 1200 µL	84 mm	1,000	F161111	-
	D5000 EASYPACK (3 bags of 334)	0.5 - 5 mL	10.4 cm	1,002	F161571	-
D10mL EASYPACK (1 box of 200)	1 - 10 mL	16 cm	200	F161210	-	
STERIL	D200ST STERILPACK	2 - 200 µL	51 mm	400	-	F161330
	D1000ST STERILPACK	100 - 1000 µL	66 mm	400	-	F161340

PIPETMAN DIAMOND FILTER TIPS					
	Description	Volume Range	Tip Length	Qty/Pack	Sterilised Tips
					Part Number
BLISTER	DFL10ST BLISTER REFILL	0.1 - 10 µL	45 mm	960	F172203
	DF30ST BLISTER REFILL	2 - 30 µL	51 mm	960	F172303
	DF100ST BLISTER REFILL	10 - 100 µL	51 mm	960	F172403
	DF200ST BLISTER REFILL	20 - 200 µL	51 mm	960	F172503
	DF300ST BLISTER REFILL	10 - 300 µL	51 mm	960	F172703
	DF1000ST BLISTER REFILL	100 - 1000 µL	66 mm	960	F172603
TIPACK	DF10ST Filter TIPACK	0.1 - 10 µL	30 mm	960	F171103
	DFL10ST Filter TIPACK	0.1 - 10 µL	45 mm	960	F171203
	DF30ST Filter TIPACK	2 - 30 µL	51 mm	960	F171303
	DF100ST Filter TIPACK	10 - 100 µL	51 mm	960	F171403
	DF200ST Filter TIPACK	20 - 200 µL	51 mm	960	F171503
	DF300ST Filter TIPACK	10 - 300 µL	51 mm	960	F171603
	DF1000ST Filter TIPACK	100 - 1000 µL	66 mm	960	F171703
	DF1200ST Filter TIPACK	100 - 1200 µL	84 mm	960	F171803



EMPTY RELOAD RACKS / BOXES		
Description	Qty	Part Number
Universal Reload Box (1 rack)	1	F167100
DL10/D200 Empty Box (For RELOAD)	2	F171204
D1000 Empty Box (For RELOAD)	2	F171504
D10 Empty Racks (set of 2)	2	F171102
DL10 Empty Racks (set of 2)	2	F171202
D200 Empty Racks (set of 2)	2	F171302
D300 Empty Racks (set of 2)	2	F171402
D1000/D1200 Empty Racks	2	F171502
D5000 Empty Rack (1 rack)	1	F161360
D10mL Empty Rack (1 rack)	1	F161220



- Universal Reload box for use with TOWERPACKS.
- Empty box for use with RELOAD PACK and BLISTER PACK.

Empty Rack for use with ECOPACK and EASY PACK loose tips.

BLISTER PACK FOR PIPETMAX - CERTIFIED 384-WELL						
	Description	Volume Range	Tip Length	Qty/Pack	Autoclavable Tips	Sterilised Tips
					Part Number	Part Number
BLISTER	DSL10 BLISTER REFILL 384-Certified	0.1 - 20 µL	45 mm	960	F172210	F172211
	DS200 BLISTER REFILL 384-Certified	2 - 200 µL	51 mm	960	F172310	F172311
	DS1000 BLISTER REFILL 384-Certified	100 - 1000 µL	66 mm	960	F172510	F172511
BLISTER FILTER	DSFL10ST BLISTER REFILL 384-Certified	0.1 - 10 µL	45 mm	960	-	F172213
	DSF30ST BLISTER REFILL 384-Certified	2 - 30 µL	51 mm	960	-	F172313
	DSF200ST BLISTER REFILL 384-Certified	20 - 200 µL	51 mm	960	-	F172513
	DSF1000ST BLISTER REFILL 384-Certified	100 - 1000 µL	66 mm	960	-	F172613



microman[®]

E

ERGONOMIC PIPETTING FOR PROBLEM LIQUIDS

Contamination-Free Pipetting

Minimize the potential for pipette, sample and human contamination with MICROMAN[®] E. Dispose of the capillary piston (CP) tip safely with a click of the push button.

Reliable Results Even With Problem Liquids

Whether a viscous, volatile, hot or cold sample, MICROMAN E can handle the job with accuracy and precision.

Have complete confidence in your results with the new volume-locking button which eliminates accidental volume modification.

Protect Your Pipettes

Positive-displacement technology makes it the ideal pipette for volatile liquids that can contaminate and corrode your pistons.

MICROMAN E positive-displacement pipettes, along with capillary pistons, offer the highest precision when pipetting problem samples - ergonomically. Working like a syringe, Capillary Pistons eliminate the air cushion between the sample and disposable piston. Therefore the accuracy of the pipettes is not affected by the physical properties of the sample.



Download MICROMAN E White Paper at www.gilson.com

MICROMAN E							
Model	Part Number	Capillary Piston	Volume (μL)	Maximum Permissible Errors			
				Gilson		ISO 8655	
				Systematic error (μL)	Random error (μL)	Systematic error (μL)	Random error (μL)
M10E	FD10001	CP10 CP10ST	1	± 0.09	≤ 0.03	± 0.2	≤ 0.1
			5	± 0.10	≤ 0.03	± 0.2	≤ 0.1
			10	± 0.15	≤ 0.06	± 0.2	≤ 0.1
M25E	FD10002	CP25 CP25ST	3	± 0.25	≤ 0.08	± 0.7	≤ 0.3
			10	± 0.27	≤ 0.08	± 0.7	≤ 0.3
			25	± 0.30	≤ 0.10	± 0.7	≤ 0.3
M50E	FD10003	CP50 CP50ST	20	± 0.34	≤ 0.20	± 0.7	≤ 0.3
			50	± 0.70	≤ 0.30	± 0.7	≤ 0.3
M100E	FD10004	CP100 CP100ST	10	± 0.50	≤ 0.20	± 1.5	≤ 0.6
			50	± 0.75	≤ 0.30	± 1.5	≤ 0.6
			100	± 1.00	≤ 0.40	± 1.5	≤ 0.6
M250E	FD10005	CP250 CP250ST	50	± 1.50	≤ 0.30	± 6	≤ 2.0
			100	± 1.70	≤ 0.30	± 6	≤ 2.0
			250	± 2.50	≤ 0.50	± 6	≤ 2.0
M1000E	FD10006	CP1000 CP1000ST	100	± 3.0	≤ 1.6	± 12	≤ 4.0
			500	± 5.0	≤ 2.5	± 12	≤ 4.0
			1000	± 8.0	≤ 4.0	± 12	≤ 4.0



CAPILLARY PISTONS

CAPILLARY PISTONS			
Capillary Piston	MICROMAN Model	Part Number	Qty/Box
CP10	M10E	F148412	192
		F148312	960
CP25	M25	F148112	200
		F148012	960
CP50	M50E	F148113	200
		F148013	960
CP100	M100E	F148414	192
		F148314	960
CP250	M250E	F148114	200
		F148014	960
CP1000	M1000E	F148560	182
Sterilized Capillary Pistons			
CP10ST	M10E	F148413	192
		F148313	960
CP25ST	M25E	F148712	576
CP50ST	M50E	F148713	576
CP100ST	M100E	F148415	192
		F148315	960
CP250ST	M250E	F148714	576
CP1000ST	M1000E	F148180	182

100% Protection Against Contamination.

The disposable piston is located inside the capillary tip so users can be assured that no harmful samples will contaminate the pipette.

- Dye-free - no risk of chemical contamination.
- Slender profile - fits most tubes.



GILSON[®]



repetman®

distriman®



THE MOTORIZED REPETITIVE DISPENSING SOLUTION!

Comfortable Pipetting With No Force Required

It fits naturally in either hand and increases operator comfort.

Improves Results Reducing Operator Error

With automatic tip identification and motor-driven pipetting.

REPETMAN® is a positive-displacement pipette with a large choice of REPET-TIP consumables - standard or sterile from 0.1 mL to 50 mL, covering a wide range of dispensed volumes: from 1 µL to 50 mL.

REPETMAN	
REPETMAN	Part Number
REPETMAN, EU plug	F164501
REPETMAN, US plug	F164502
REPETMAN, UK plug	F164503
REPETMAN, Australian plug	F164504
NiMH battery pack	F164595

REPET-TIPS		
Repet-Tips	Non-Sterile	Sterile*
REPET-TIP (0.1 mL)	F164510	F164515
REPET-TIP (0.5 mL)	F164520	F164525
REPET-TIP (1.0 mL)	F164527	F164528
REPET-TIP (1.25 mL)	F164530	F164535
REPET-TIP (2.5 mL)	F164540	F164545
REPET-TIP (5.0 mL)	F164550	F164555
REPET-TIP (10.0 mL)	F164557	F164558
REPET-TIP (12.5 mL)	F164560	F164565
REPET-TIP (25 mL, box of 50)**	F164570	-
REPET-TIP (25 mL, box of 25)**	-	F164575
REPET-TIP (50 mL)**	F164580	F164585
Adapter for 25/50 mL REPET-TIP (set of 10)	F164591	-
Adapter for 25/50 mL REPET-TIP (set of 5)	-	F164592

* Sterile / Endotoxin-free (less than 0.01 IU/mL)
 ** One autoclavable adapter is provided in each box



FASTER MULTIPLE DISPENSING

Simplifies Multiple Dispensing

Dispense exact volumes without tedious calculations.

Optimal pipetting results even with volatile or viscous liquids.

Save Money

DISTRIMAN® covers a large volume range with only three DISTRITIP syringes - very economical and available in standard or sterilised form (boxes of 50).

DISTRIMAN is the only continuously adjustable mechanical repetitive pipette with direct volume readout available on the market.

DISTRIMAN	
Model	Part Number
DISTRIMAN (1 µL to 1.25 mL)	F164001



DISTRITIPS							
DistriTips (pk 50)	Aliquot Range	Part Number	Volume (µL)	Maximum Permissible Errors			
				Gilson		ISO 8655	
				Systematic error (µL)	Random error (µL)	Systematic error (µL)	Random error (µL)
125 µL Micro Micro ST*	1 - 12.5 µL	F164100 F164130	Min. 2	± 0.100	≤ 0.080	± 0.2	≤ 0.1
			5	± 0.125	≤ 0.075	± 0.2	≤ 0.1
			Max. 10	± 0.200	≤ 0.100	± 0.2	≤ 0.1
1250 µL Mini Mini ST*	10 - 125 µL	F164110 F164140	Min. 20	± 0.80	≤ 0.20	± 1.5	≤ 0.6
			50	± 1.00	≤ 0.40	± 1.5	≤ 0.6
			Max. 100	± 1.00	≤ 0.60	± 1.5	≤ 0.6
12.5 mL Maxi Maxi ST*	0.1 - 125 mL	F164120 F164150	Min. 200	± 6.0	≤ 1.0	± 12.0	≤ 4.0
			500	± 7.5	≤ 1.5	± 12.0	≤ 4.0
			Max. 1000	± 10.0	≤ 2.5	± 12.0	≤ 4.0

*ST means sterilised syringes (individually wrapped).



macroman™

THE EFFICIENT SOLUTION FOR PIPETTING UP TO 100 mL AT ONCE!



Optimal Speed Control

Aspirating and dispensing speed can be set using pressure sensitive triggers or by using the thumbwheel while pipetting. The speed is adjustable up to 25 mL in less than three seconds.

The screen continuously displays battery status and the aspiration and dispensing speed setting.

Comfortable Use

Prevent hand fatigue with MACROMAN™'s ergonomic handle featuring wide triggers for maximum comfort and stress-free pipetting.

The Lithium-Ion battery enables a longer, vibration-free use with reduced charging time.

Increase precision by choosing your flow rate mode from slow drops to rapid dispensing.

All stands are included with MACROMAN for stable and easy storage on the bench.

MACROMAN is a reliable pipette controller for glass and plastic pipettes from 1 mL to 100 mL.

Description	Volume Range	Part Number
MACROMAN	0.1 to 100 mL	F110120

MACROMAN ACCESSORIES

Description	Part Number
Charging desk stand	F107200
Wall mount	F107201
Magnetic wall mount	F107202
Filter, 0.22 µm, standard (set of 10)	F107204
Filter, 0.22 µm, sterile (set of 10)	F107205
Filter, 0.45 µm, standard (set of 10)	F107206
Filter, 0.45 µm, sterile (set of 10)	F107207
Power supply	F107203
Lithium-Ion battery	F107208
Nosepiece	F107209
Adjustable side stand	F107210
Pipette adaptor	F107211



dispensman®

DISPENSE LIQUIDS SIMPLY AND ACCURATELY



Precise

Dispense just the liquid needed every time with a quick, easy, and precise volume setting.

No Loss of Liquid

Prime your operation by purging the air in RECYCLE position keeping the liquid inside the bottle and avoiding any loss of liquid.

Safe

Keep your bench and other devices safe with the anti-drip system and the return of liquid into the bottle after use.

Flexible

- Numerous bottle adaptors.
- Adaptable to every type of liquid with an easy calibration by the user.
- Fully autoclavable at 121°C.
- Convenient 3-position nozzle.

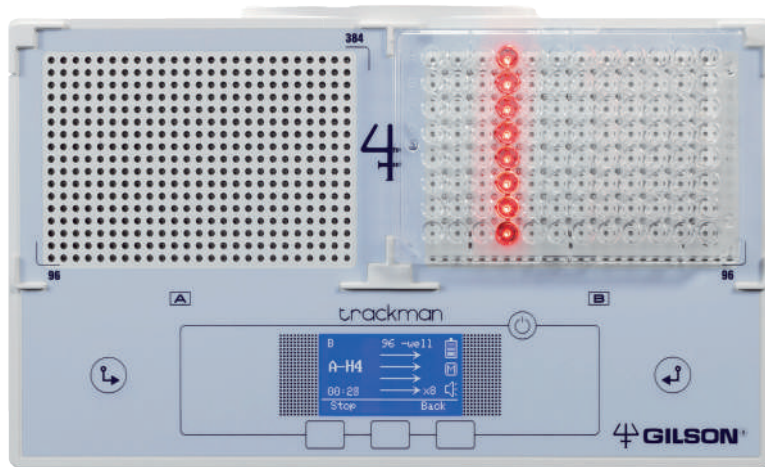


Model	Part Number	Volume range	Scaling (mL)	Maximum permissible errors			
				Gilson		ISO 8655-5	
				Systematic Error (mL)	Random Error (mL)	Systematic Error (mL)	Random Error (mL)
DISPENSAN 2.5 mL	F110101	0.25 - 2.5 mL	0.05	± 0.012	≤ 0.002	± 0.030	≤ 0.010
DISPENSAN 5.0 mL	F110102	0.5 - 5 mL	0.10	± 0.030	≤ 0.005	± 0.030	≤ 0.010
DISPENSAN 10 mL	F110103	1 - 10 mL	0.20	± 0.060	≤ 0.010	± 0.060	≤ 0.020
DISPENSAN 25 mL	F110104	2.5 - 25 mL	0.50	± 0.150	≤ 0.025	± 0.150	≤ 0.050
DISPENSAN 50 mL	F110105	5 - 50 mL	1.00	± 0.300	≤ 0.050	± 0.300	≤ 0.100



trackman®

GUIDING YOU TO SUCCESS!



Get on track, keep on track, as you pipette flawlessly from one microplate to another with the help of TRACKMAN®.

TRACKMAN	
Model	Part Number
TRACKMAN	F70301

Secure Your Results

TRACKMAN simplifies your work, improves your productivity and helps eliminate pipetting errors and cross-contamination.

Versatile Performance

TRACKMAN'S LED lights help you place your 96- and 384- well microplates in the correct position on the light panel, while fixed notches secure your plates firmly in place.

Complete Your Equipment With:

Expand the functionality of your TRACKMAN with the versatile microtube-holder to transfer liquids from one microtube to another (0.5 mL, 1.5 mL, and 2 mL).

TRACKMAN ACCESSORIES	
Model	Part Number
Microtube-holder	F70105
Pedal for TRACKMAN	F70261

GmCLab

QUICK AND SAFE MINI CENTRIFUGE



The GmCLab is a fixed-speed, personal mini-centrifuge that provides quick separation of particles from the supernatant in a solid-liquid mixture, or spins down liquids to the bottom of a microtube.

Fast And Simple Operation

Simple spin activation by closing the lid. The lid opens up to an angle of 160° to allow easy access to the tubes.

Save Space With Its Simple Design

Small footprint allows for easy integration on a busy workbench.

Multiple Tube Options

Accommodates eight micro-tubes of 1.5 mL or 2.0 mL, two strips of 8-PCR (0.2 mL) tubes, or 16 single PCR tubes.

GmCLab	
Model	Part Number
GmCLab - EU plug (230 V / 50-60 Hz)	F110731
GmCLab - US plug (120 V / 50-60 Hz)	F110732
GmCLab - UK plug (230 V / 50-60 Hz)	F110733
GmCLab - AU plug (230 V / 50-60 Hz)	F110734
GmCLab - JP plug (100 V / 50-60 Hz)	F110735







minipuls

EVOLUTION®

HIGH PERFORMANCE, EASY-TO-USE PERISTALTIC PUMP

Maximise Your Applications

Offering unmatched flexibility and performance, the MINIPULS Evolution provides the flexibility to quickly expand from 1 to 16 separate channels of low pulse flow with a variety of fluids at different viscosities.



MINIPULS EVOLUTION	
Description	Part Number
MINIPULS Evolution Speed Control Module	F110701
MF1 Pump Head	F110705
MF4 Pump Head	F110706
MF2 Pump Head	F110707

minipuls®

3

Pulse-Free Peristaltic Pump

A rugged pump with interchangeable heads for delivering smooth, low pulse flows of liquids in 1, 2, 4, or 8 channel standard flow rate and 2 or 4 channel high flow rate configurations.

Chemical resistant pump heads, equipped with ten stainless steel rollers, produce reproducible flow rates at high pressures.



MINIPULS 3			
Description	Part Number	Max Flow Rate	No/ Channels
Pump Module MINIPULS 3	F155001	-	-
R1 Pump Head	F117604	up to 30 mL/min	1
R2 Pump Head	F117800	up to 30 mL/min	2
R4 Pump Head	F117606	up to 30 mL/min	4
R8 Pump Head	F117608	up to 30 mL/min	8
R2/HF Pump Head (High Flow)	F117830	up to 220 mL/min	2
R4/HF Pump Head (High Flow)	F117831	up to 220 mL/min	4

minipuls

TUBING

SELECTING THE RIGHT TUBING

A collection of tables and charts is available at www.gilson.com to be used as a guide for selecting the appropriate tubing.

- Most suitable material according to your sample's chemical compatibility.
- Large variety of internal diameters to reach desired flow rates.
- Appropriate connectors and extension tubing.

TUBING FOR MF1 & MF4 PUMP HEADS (LENGTH = APPROX 40 CM / 16 IN)								
MATERIAL	Internal diameter (mm)	Tubing Part Number (calibrated tubing)	Colour coded stops	Extension tubing (3m/118in)	Connectors	Minipuls 3 Maximum Flow rate (mL/min)	Minipuls evolution Maximum Flow rate (mL/min)	
PVC	0.25	F117932	●●	F117952	F117985	0,407	0,574	
	0.38	F117933	●●	F117953	F117986	0,695	1,22	
	0.51	F117934	●●	F117954	F117986	1,415	1,90	
	0.76	F117936	●●	F117956	F117987	2,1	3,00	
	1.02	F117938	○	F117958	F1179941	4,1	6,0	
	1.30	F117940	○	F117960	F1179941	6,2	9,0	
	1.52	F117942	●●	F117962	F1179941	9	14	
	1.65	F117943	●●	F117963	F1179941	10	16	
	2.06	F117945	●●	F117965	F1179941	16	25	
	2.29	F117946	●●	F117966	F1179941	20	29	
	2.79	F117948	●●	F117968	F1179951	23	39	
	3.16	F117949	●●	F117969	F1179951	29	47	
	ISOVERSINIC ISOVERSINIC*	0.5	F1817741	●●	F117740	F117986	1,8	2,9
		1.0	F1817743	●●	F117742	F1179941	4	10
2.0		F1817745	●●	F117744	F1179941	13	24	
3.0		F117747	●●	F117746	F1179951	27	55	
4		F117749	●●	F117748	-	33	70	
SILICONE		0.6	F1825111	○	F1825131	F117987	1,5	3,2
		1.0	F1825112	○	F1825132	F1179941	4	7
	2.0	F1825113	●●	F1825133	F1179951	15	21	
	2.8	F1825114	●●	F117975	F1179951	23	31	
PHARMED*	0.5	F1825101	●●	F1825121	F117986	1,4	2,5	
	1.0	F1825102	○	F1825122	F117994z	5	7	
	2.0	F1825103	●●	F1825123	F1179951	15	24	

TUBING FOR HF2 PUMP HEAD (LENGTH = 3M / 118 IN)				
MATERIAL	Internal diameter mm	Tubing Part Number (calibrated tubing)	MINIPULS 3 Maximum Flow rate (mL/min)	MINIPULS evolution Maximum Flow rate (mL/min)
PVC	2.06	F117965	24	33
	2.29	F117966	29	41
	2.79	F117968	41	66
	3.16	F117969	49	85
	4.0	F117970	75	128
	5.0	F117980	113	179
	6.0	F117981	163	218
ISOVERSINIC*	8.0	F117982	213	340
	2.0	F117744	23	30
	3.0	F117746	48	67
	4.0	F117748	86	120
SILICONE	6.0	F117750	181	246
	2.0	F1825133	25	31
	3.0	F117975	44	57
	4.0	F117976	71	105
	5.0	F117977	115	148
	6.0	F117978	150	207
	7.0	F117979	220	300
PHARMED*	2.0	F1825123	26	31
	3.2	F1825124	57	77
	6.4	F1825125	171	240

Pharmed* and Isoversinic* are registered trademarks of Norton Performance Plastic Corp.



extractman®

EASIER DISCOVERY OF MORE PROTEIN INTERACTIONS



EXTRACTMAN offers a faster, gentler magnetic mixing approach to isolating target proteins and is ideal for isolating elusive, weakly-bound protein complexes critical to protein interaction research.

Ergonomic And Easy-To-Use

Slide-based extraction gently moves your sample through isolation with a simple slide of the handle.

Preserve Your Sample

Exclusion-based Sample Preparation (ESP)* technology isolated proteins while keeping the remaining sample intact for further study.

* trademarked technology owned by Salus.

EXTRACTMAN	
Model	Part Number
EXTRACTMAN Starter Kit	2210000
EXTRACTMAN Bead Capture Strip	22100007
EXTRACTMAN 15 µL Extraction Plate	22100008

ASPEC®

TRUSTED EXTRACTION TECHNOLOGY

SOLID PHASE EXTRACTION SYSTEMS

Get the Most From Your Analytical Systems

Solid Phase Extraction (SPE) is a highly selective cleanup technique that eliminates matrix effects and concentrates compounds present as traces to improve analytical detection by liquid and gas chromatography.

Reliable Extractions

ASPEC® SPE cartridges come in large variety of phases, silica or polymer based, and are available in 1, 3, and 6 mL cartridges and 96-well plates. With high lot-to-lot reproducibility and high loading capacity, they guarantee reproducible SPE methods with high recovery and clean extraction.



Make Your Lab Life Easier

The ASPEC Positive Pressure Manifold for solid phase extraction (SPE) provides uniform and consistent flow rate control for the cleanup of low or high viscosity samples, improving reproducibility and recovery.

Benefits for Your Science

The ASPEC Positive Pressure Manifold provides confidence in data generated:

- Easy to setup and use: Only one gas source, no training needed to operate.
- Flexible: Single unit compatible with 1, 3, and 6 mL cartridges and 96-well plates.
- Reproducible extractions: Fine and precise flow control.
- Parallel extractions: Increase daily throughput.



LEARN MORE ABOUT ASPEC SPE SOLUTIONS AT GILSON.COM

GX-241 ASPEC® SPE System



GX-271 ASPEC® SPE System



GX-274 ASPEC® SPE System





Verity®

THE PERFECT SYSTEM
TO FIT YOUR RESEARCH

PURIFICATION SYSTEMS

Purification System Designed for your Application

VERITY systems offer a wide array of components to meet all of your purification needs.

VERITY Systems Offer:

- Classic HPLC to flash to CPC, for small to large molecules
- Milligram to kilogram purifications
- Batch to continuous injection techniques
- UV/Vis, ELSD and MS detection options



VERITY® HPLC Purification System with Isocratic Pump and UV/Vis Detector

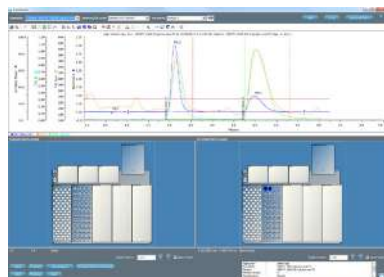


VERITY® PLC Purification System with Centrifugal Partition Chromatography (CPC) Column and MS Detector

Popular VERITY Configurations

- **VERITY PLC Purification Systems** — Easily switch from preparative to flash chromatography with a simple column change
- **VERITY PLC Systems with CPC Column** — Ideal for natural product purification, PLC with CPC offers improved yield and zero sample loss at less cost
- **VERITY PLC-MS Systems** — Reduce the number of fractions collected and analyzed for additional time and money savings
- **VERITY Oligo Purification System** — Isolate, analyze, and desalt reagent-grade oligonucleotides in one continuous run
- **VERITY GPC Clean-up System** — Improve LC and GC column life and decrease downtime with manual or automated post-extraction clean-up

Get the Accuracy and Precision You Need for Trusted Results



TRILUTION® LC Control Software

- **Ease of use** — Systems controlled by intuitive software allowing you to focus on the science
- **Flexibility** — Numerous choices and options let you adapt quickly to your changing research
- **Built-to-last** — Durability backed by Gilson's long history in chromatography



ISO 17025 & GILSON PIPETTES

Gilson Pipette with a Calibration Certificate Issued by ISO 17025 Accredited Lab

Around the world, the accreditation of pipette testing and calibration laboratories is based on the ISO 17025 international standard. ISO 17025 accreditation enables test data to be internationally validated and accepted.

This system of international mutual recognition allows test data to be equivalent throughout the world because they are linked to the same metrological chain of international standard weight.

Hence, the measure of the uncertainties derived from equipment, technicians, pipettes and tips which indicates the error range attributable to the measured quantities allows the accredited laboratory to attest to the pipette's reliability and ensures that it is within acceptable limits after calibration.

- Gilson ISO 17025-accredited laboratory in France provides the undisputable guarantee and confidence that our Quality System and Standard Operating Procedures have been thoroughly evaluated and approved by a legitimate third party.
- Gilson offers accredited calibration for new and serviced pipettes in full compliance with the ISO 17025 & ISO 8655 requirements.
- A certificate of calibration, approved by the French organization of accreditation (COFRAC), is delivered with each pipette. The certificate is recognized by international organizations of accreditation.
- In an on-going effort to address the growing demands for enhanced traceability and affordable ISO 17025 solutions, Gilson has been granted accreditation by the COFRAC for a special Gilson 3 volumes x 4 measurements method in addition to being accredited for the standardized ISO 8655 3 volumes x 10 measurements method. This enables us to offer ISO 17025 calibration at an attractive price.
 - The standardized ISO 8655 method (3 volumes x 10 measurements).
 - The special Gilson method (3 volumes x 4 measurements).



The calibration certificate with the uncertainty measurement is approved by the French Organization of Accreditation (COFRAC). This certificate includes the uncertainty budget defining the uncertainties for the involved measurements.



New Pipettes with a Calibration Certificate Issued by the Gilson ISO 17025 Accredited Lab

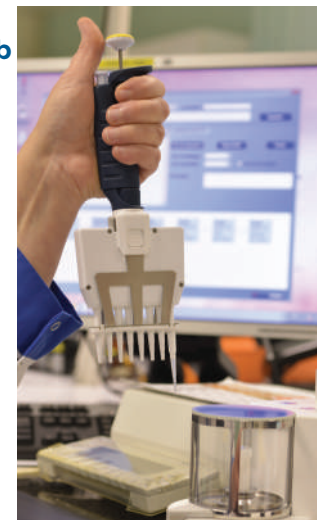
To order a new pipette with a calibration certificate, add a **C** at the end of the reference for a 3 x 10 measurements method (standard ISO 8655), or a **CG** for a 3 x 4 measurements (Gilson method, available in French service centre recognised by accreditation organization).

Example:

- You need a **P100** delivered with a 3 x 10 measurements: Order the following reference: **F123615C**
- You need a **P2N** delivered with a 3 x 4 measurements: Order the following reference: **F144561CG**

All mechanical, repetitive and motorized pipettes can be delivered with calibration certificate.

Please contact your nearest distributor for calibration certificate request form.



Serviced Pipettes with a Calibration Certificate Issued by ISO 17025 Accredited Lab

Some Gilson service centers in the world are accredited (ISO 17025) for pipette calibration when using the gravimetric method (ISO 8655).

If your nearest service center is accredited, you can ask for a certificate of calibration including information about the conformity of your pipette. This certificate is recognized throughout the world and linked to the International System of Units.

If your local Gilson service center is not yet accredited, Gilson's Accredited Laboratory of Calibration, based in France, can provide you the following service offers:

ISO 8655 3 X 10 MEASUREMENTS METHOD (NO TIP CHANGE)	
Part Number	Description
PCI 001	Fixed volume Pipettes
PCI 002	Adjustable volume Pipettes
PCI 003	8 channel Pipettes
PCI 004	12 channel Pipettes

GILSON 3 X 4 MEASUREMENTS METHOD (NO TIP CHANGE)	
Part Number	Description
PGCI 001	Fixed volume Pipettes
PGCI 002	Adjustable volume Pipettes
PGCI 003	8 channel Pipettes
PGCI 004	12 channel Pipettes

