

eppendorf



The 360° Evolution

Eppendorf Combitips advanced®

Eppendorf Combitips advanced®

Time for a New Original!

The invention of the Multipipette and the Eppendorf Combitips marks a milestone in the field of Liquid Handling! Executing long pipetting and dispensing series is remarkably simpler and faster. With innovative sensor technology for automatic Combitip recognition, the Combitips plus/Multipipette system has become an indispensable tool for every laboratory.

The increasingly high demands of modern laboratory work have also heightened the requirements for a high-precision dispensing tip. Our experts have thoroughly optimized the Combitips using sophisticated engineering. The result: a revolutionary 360° evolution! A completely new standard in dispensing tips.

The »Combitips« principle

- > Positive displacement principle (comparable to a syringe)
- > High-precision dispensing regardless of the density and viscosity of the liquid
- > Prevents aerosol contamination with hermetically sealed piston for secure dispensing and provides protection from radioactive and toxic substances
- > Quick dispensing of long series with precise, repeated dispensing of identical volumes (with the Multipipette)

Also online:

www.eppendorf.com/combitips-advanced

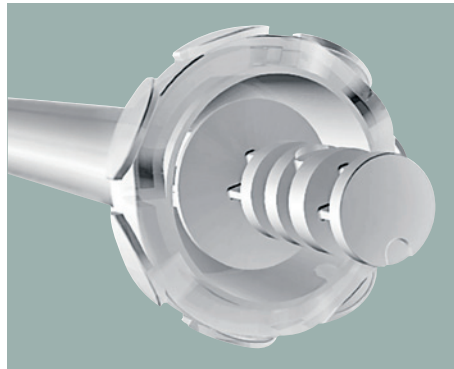


Unmistakable Down to the Last Detail



Intelligent packaging

with the redesigned dispenser box (for »Eppendorf Quality« and PCR clean) with extricable chute, Combitips advanced are always within reach. Portioning in 4 bags (25 pcs. each) ensures dust-free storage.



Unmistakably Eppendorf

The new Eppendorf Combitips advanced also feature the characteristic Eppendorf 3D design on the upper rim of the Combitip, allowing you to easily and confidently recognize the Eppendorf Original!



Variety and selection

With 9 volume sizes (0.1 mL to 50 mL) and 3 purity grades (Eppendorf Quality, PCR clean and Eppendorf Biopur) you will always find the perfect Combitip for your application! The »Biopur« tips are individually blister-wrapped and feature an access tab which makes them easier to open, even with gloves!



A perfect team

Whether Multipipette 4780, Multipipette plus, Multipipette stream or Xstream – the Combitips advanced are optimized for all Multipipette models to create the perfect connection!



Always easy to reach

The new Combitip Rack features trouble-free and single-hand operation during dispensing work. The rack holds up to 8 Combitips advanced in sizes ranging from 0.1 mL to 10 mL. The transparent tray allows for the sizes of the Combitips to be easily identified using the color coding.

Additional information on Eppendorf Multipipette can be found online:
www.eppendorf.com/mpplus
www.eppendorf.com/mpxstream

Technical specifications

| Combitips advanced | Min./max. volume | Increment/step size | Max. dispensing volume | Volume | Inaccuracy*1 | Imprecision*1 |
|--|------------------|---------------------|------------------------|-----------|--------------|---------------|
| for Multipette plus and Combitips advanced system | | | | | | |
| 0.1 mL | 1 µL | 1 µL | 20 µL | 2 µL | ±1.6% | ±3.0% |
| | 20 µL | | | 20 µL | ±1.0% | ±2.0% |
| 0.2 mL | 2 µL | 2 µL | 40 µL | 4 µL | ±1.3% | ±2.0% |
| | 40 µL | | | 40 µL | ±0.8% | ±1.5% |
| 0.5 mL | 5 µL | 5 µL | 100 µL | 10 µL | ±0.9% | ±1.5% |
| | 100 µL | | | 100 µL | ±0.8% | ±0.6% |
| 1 mL | 10 µL | 10 µL | 200 µL | 20 µL | ±0.9% | ±0.9% |
| | 200 µL | | | 200 µL | ±0.6% | ±0.4% |
| 2.5 mL | 25 µL | 25 µL | 500 µL | 50 µL | ±0.8% | ±0.8% |
| | 500 µL | | | 500 µL | ±0.5% | ±0.3% |
| 5 mL | 50 µL | 50 µL | 1,000 µL | 100 µL | ±0.6% | ±0.6% |
| | 1,000 µL | | | 1,000 µL | ±0.5% | ±0.25% |
| 10 mL | 100 µL | 100 µL | 2,000 µL | 200 µL | ±0.5% | ±0.6% |
| | 2,000 µL | | | 2,000 µL | ±0.5% | ±0.25% |
| 25 mL | 250 µL | 250 µL | 5,000 µL | 500 µL | ±0.4% | ±0.6% |
| | 5,000 µL | | | 5,000 µL | ±0.3% | ±0.25% |
| 50 mL | 500 µL | 500 µL | 10,000 µL | 1,000 µL | ±0.3% | ±0.5% |
| | 10,000 µL | | | 10,000 µL | ±0.3% | ±0.3% |
| for Multipette stream/Xstream and Combitips advanced system | | | | | | |
| 0.1 mL | 1 µL | 0.1 µL | 0.1 mL | 10 µL | ±1.6% | ±2.5% |
| | 50 µL | | | ±1.0% | ±1.5% | |
| | 100 µL | | | ±1.0% | ±0.5% | |
| 0.2 mL | 2 µL | 0.2 µL | 0.2 mL | 20 µL | ±1.3% | ±1.5% |
| | 100 µL | | | ±1.0% | ±1.0% | |
| | 200 µL | | | ±1.0% | ±0.5% | |
| 0.5 mL | 5 µL | 0.5 µL | 0.5 mL | 50 µL | ±0.9% | ±0.8% |
| | 250 µL | | | ±0.9% | ±0.5% | |
| | 500 µL | | | ±0.9% | ±0.3% | |
| 1 mL | 10 µL | 1 µL | 1 mL | 100 µL | ±0.9% | ±0.55% |
| | 500 µL | | | ±0.6% | ±0.3% | |
| | 1,000 µL | | | ±0.6% | ±0.2% | |
| 2.5 mL | 2.5 mL | 2.5 µL | 2.5 mL | 250 µL | ±0.8% | ±0.45% |
| | 1,250 µL | | | ±0.5% | ±0.3% | |
| | 2,500 µL | | | ±0.5% | ±0.15% | |
| 5 mL | 50 µL | 5 µL | 5 mL | 500 µL | ±0.8% | ±0.35% |
| | 2,500 µL | | | ±0.5% | ±0.25% | |
| | 5,000 µL | | | ±0.5% | ±0.15% | |
| 10 mL | 100 µL | 10 µL | 10 mL | 1,000 µL | ±0.5% | ±0.25% |
| | 5,000 µL | | | ±0.4% | ±0.25% | |
| | 10,000 µL | | | ±0.4% | ±0.15% | |
| 25 mL | 250 µL | 25 µL | 25 mL | 2,500 µL | ±0.3% | ±0.35% |
| | 12,500 µL | | | ±0.3% | ±0.25% | |
| | 25,000 µL | | | ±0.3% | ±0.15% | |
| 50 mL | 500 µL | 50 µL | 50 mL | 5,000 µL | ±0.3% | ±0.5% |
| | 25,000 µL | | | ±0.3% | ±0.2% | |
| | 50,000 µL | | | ±0.3% | ±0.15% | |

*1 The data for imprecision (random error) and inaccuracy (systematic error) according to EN ISO 8655 only apply when using original Eppendorf Combitips advanced.

Compatibility of Combitips advanced with standard laboratory tubes

| Combitips advanced | Eppendorf Safe-Lock Tubes | | | Conical tubes | | Eppendorf Deepwell Plates | | |
|--------------------|---------------------------|--------|--------|---------------|-------|---------------------------|------------|------------|
| | 0.5 mL | 1.5 mL | 2.0 mL | 15 mL | 50 mL | 96/500 µL | 96/1000 µL | 96/2000 µL |
| 0.2 mL | + | + | + | - | - | + | + | + |
| 0.5 mL | + | + | + | - | - | + | + | + |
| 1 mL | + | + | + | - | - | + | + | + |
| 2.5 mL | ⊕ | ⊕ | ⊕ | ⊕ | ⊕ | + | ⊕ | ⊕ |
| 5 mL | + | + | + | ⊕ | ⊕ | + | + | + |
| 10 mL | + | + | + | - | ⊕ | + | + | + |
| 25 mL | - | + | + | - | + | + | + | + |
| 50 mL | - | + | + | - | - | + | + | + |

⊕ = improved compatibility compared to the Combitip plus generation

The Third Dimension of Tip Technology



Multipette connection

Automatic Combitip recognition and volume calculation



Ergonomic design

Unique funnel geometry prevents damage to gloves and ensures comfortable handling



Individually color coded

Quick identification of the desired Combitips facilitates the workflow (color coding is also visible on packaging!)



Elongated tips (for 2.5 mL, 5 mL and 10 mL)

Complete emptying of all common tubes prevents sample loss (see table on page 4)



Optimized graduation

Visibility of liquid volume using optimized graduations



Made of virgin polypropylene.

Free of slip agents, biocides and plasticizers.



Ordering information

| Combitips advanced® | Color coding | Eppendorf Quality | PCR clean | Eppendorf Biopur® |
|---------------------|--------------|-------------------|--------------|-------------------|
| 0.1 mL | □ White | 0030 089.405 | 0030 089.766 | 0030 089.618 |
| 0.2 mL | ■ Light blue | 0030 089.413 | 0030 089.774 | 0030 089.626 |
| 0.5 mL | ■ Purple | 0030 089.421 | 0030 089.782 | 0030 089.634 |
| 1 mL | ■ Yellow | 0030 089.430 | 0030 089.790 | 0030 089.642 |
| 2.5 mL | ■ Green | 0030 089.448 | 0030 089.804 | 0030 089.650 |
| 5 mL | ■ Blue | 0030 089.456 | 0030 089.812 | 0030 089.669 |
| 10 mL | ■ Orange | 0030 089.464 | 0030 089.820 | 0030 089.677 |
| 25 mL | ■ Red | 0030 089.472 | 0030 089.839 | 0030 089.685 |
| 50 mL | ■ Light gray | 0030 089.480 | 0030 089.847 | 0030 089.693 |

Ordering information

| Accessories | Color coding | Eppendorf Quality | Eppendorf Biopur® |
|--|--------------|-------------------|-------------------|
| 25 mL adapter (1 pc.) | ■ Red | 0030 089.715 | |
| 50 mL adapter (1 pc.) | ■ Light gray | 0030 089.723 | |
| 25 mL adapter (7 pc.) | ■ Red | | 0030 089.731 |
| 50 mL adapter (7 pc.) | ■ Light gray | | 0030 089.740 |
| Combitip Rack (for 8 Combitips advanced, 0.1 mL–10 mL) | | 0030 089.758 | |

Your local distributor: www.eppendorf.com/contact

Eppendorf AG 22331 Hamburg Germany

E-mail: eppendorf@eppendorf.com

www.eppendorf.com

www.eppendorf.com