



Thermo Scientific Medifuge Centrifuge

Fits in.  
**Stands out.**

**Thermo**  
SCIENTIFIC

# Introducing the NEW! Thermo Scientific™ Medifuge™ small benchtop centrifuge

## Fits in.

- ▶ To your routine clinical and life science applications, with a 2-in-1 hybrid rotor
- ▶ To your timeline, with four customizable programs to quickly run routine protocols
- ▶ To your space, with its compact footprint

## Stands out.

- ▶ Unique Thermo Scientific™ DualSpin™ rotor features hybrid design with interchangeable fixed angle and swinging buckets
- ▶ Large, brightly-lit display is easy to read and fast one-click lid closure simplifies operation
- ▶ Three selectable deceleration profiles including brake-off option are designed to optimize separation



Learn more at: [www.thermoscientific.com/medifuge](http://www.thermoscientific.com/medifuge)



Unique DualSpin rotor with hybrid design



Fast one-click centrifuge lid closure



Large, brightly-lit display with intuitive controls

## Thermo Scientific Medifuge small benchtop centrifuge

### 2-in-1 Design: Discover outstanding versatility with the DualSpin rotor

Perform both your routine clinical and life science applications in one platform with the DualSpin rotor. This lightweight 8-place rotor features a unique hybrid design with interchangeable fixed angle and swinging buckets, and is able to accommodate 1.4 mL to 15 mL tubes with two spacer options. Run common clinical IVD blood tubes, gel tubes, 10 mL standard syringes and 15 mL conical tubes—all in one versatile centrifuge with just one rotor. You can even run both fixed angle and swinging buckets at the same time to compare separation performance. A simple turn of the knob secures the rotor in place, without the need for any tools.

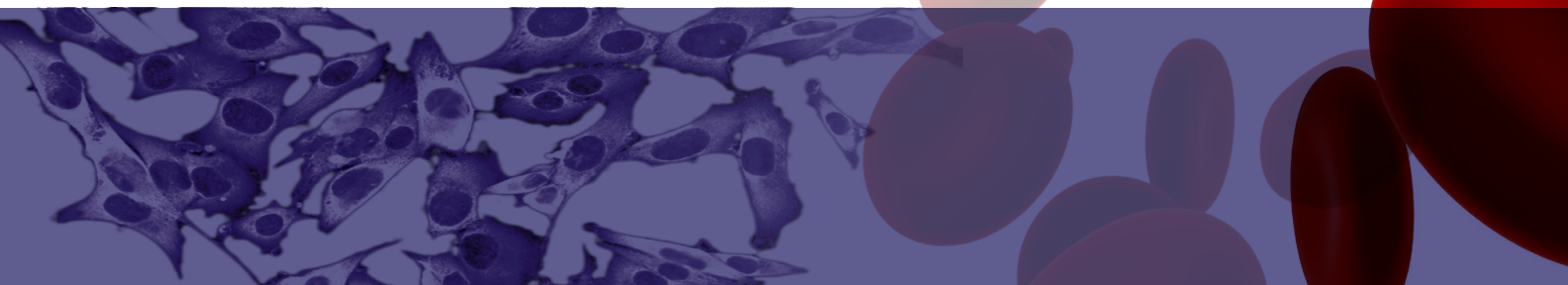
### Optimize your workflow with features designed to simplify operation

With the Medifuge small benchtop centrifuge, you can program up to 4 sets of custom run parameters to easily and quickly perform your routine protocols. Additionally, the centrifuge has 3 deceleration profiles including standard, soft and brake-off options, designed to optimize separation.

### Promote safety and environmental sustainability in your lab

- ▶ Emergency lid lock release available in case of power failure
- ▶ Quiet operation at noise level less than 56 dBA
- ▶ Lightweight composite rotor is easy to handle and saves energy during acceleration/deceleration
- ▶ Conforms to the latest clinical and safety standards, such as UL, CE and IVD<sup>1</sup>

<sup>1</sup> See full list of standards & certifications in specifications table.



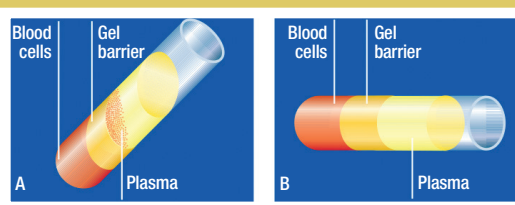


Perform both your routine clinical and life science applications with one versatile centrifuge

- ▶ Platelet-poor plasma (PPP) separation
- ▶ Urinalysis
- ▶ Clinical chemistry analysis
- ▶ Hematology analysis
- ▶ Serum preparation using gel tube
- ▶ Cell culture pelleting



Using the swinging buckets in the DualSpin rotor, the Medifuge small benchtop centrifuge is particularly well-suited to serum preparation using gel tubes. After centrifugation, the gel provides an effective barrier between the blood cells and serum. The tubes can then be stored or transported with minimum contamination to a laboratory for further testing.



#### Blood Collection Tubes with Gel Barrier

- A. Using fixed angle rotor with gel barrier blood collection tubes can result in plasma contamination
- B. The swinging bucket rotor purifies plasma with no red blood contamination



In addition to routine blood collection tubes, the DualSpin rotor's fixed angle bucket can accommodate 15 mL conical tubes, supporting life science sample separations that require low g-force, such as cell pelleting.

## Thermo Scientific Medifuge small benchtop centrifuge

Tube Type	Volume	Diameter	Length	Fixed Angle			Swinging Bucket	
				Direct Fit	Green Spacer	Yellow Spacer	Direct Fit	Green Spacer
<b>BD™ Tubes</b>								
BD CPT tube	4.0 mL	13 mm	100 mm	√			√	
BD CPT tube	8.0 mL	16 mm	125 mm	√				
BD urine tube	4.0 mL	13 mm	75 mm			√		√
BD urine tube	8.0 mL	16 mm	100 mm	√			√	
BD Vacutainer™ blood tube	2.0–4.5 mL	13 mm	75 mm			√		√
BD Vacutainer blood tube	3.5–7.0 mL	13 mm	100 mm	√			√	
BD Vacutainer blood tube	7.5–10.0 mL	16 mm	100 mm	√			√	
<b>Greiner™ VACUETTE™ Tubes</b>								
Greiner VACUETTE tube	2.0–4.0 mL	13 mm	75 mm			√		√
Greiner VACUETTE tube	5.0–6.0 mL	13 mm	100 mm	√			√	
Greiner VACUETTE tube	8.0–9.0 mL	16 mm	100 mm	√			√	
<b>Sarstedt™ Monovette™ Tubes</b>								
Sarstedt S-Monovette blood tube	1.2–1.4 mL	8 mm	66 mm			√		√
Sarstedt S-Monovette blood tube	2.6–4.3 mL	13 mm	65 mm			√		√
Sarstedt S-Monovette blood tube	2.7–3.0 mL	11 mm	66 mm			√		√
Sarstedt S-Monovette blood tube	2.7–4.3 mL	13 mm	75 mm			√		√
Sarstedt S-Monovette blood tube	4.0–5.0 mL	15 mm	75 mm			√		√
Sarstedt S-Monovette blood tube	4.5–5.0 mL	11 mm	92 mm	√			√	
Sarstedt S-Monovette blood tube	4.9 mL	13 mm	90 mm	√			√	
Sarstedt S-Monovette blood tube	7.5–8.2 mL	15 mm	92 mm		√		√	
Sarstedt S-Monovette blood tube	9.0–10.0 mL	16 mm	92 mm		√		√	
Sarstedt V-Monovette urine tube	4.0 mL	13 mm	75 mm			√		√
Sarstedt V-Monovette urine tube (round base)	6.0 mL	13 mm	100 mm	√			√	
Sarstedt V-Monovette urine tube (round base)	9.5 mL	15 mm	100 mm	√				
Sarstedt V-Monovette urine tube (conical base)	9.5 mL	15 mm	100 mm				√	
Sarstedt V-Monovette urine tube (round base)	10.0 mL	15 mm	100 mm				√	
Sarstedt V-Monovette urine tube (conical base)	10.0 mL	15 mm	100 mm	√				
<b>Other Tubes</b>								
Blood/Urine tube	4.0–7.0 mL	16 mm	75 mm			√		√
Open tube	5.0 mL	12 mm	75 mm			√		√
Glass tubes (DIN)	7.0 mL	12 mm	100 mm	√			√	
Glass tubes	10.0 mL	16 mm	100 mm	√			√	
Conical cell culture tube	15.0 mL	17 mm	120 mm	√				
Glass tubes	15.0 mL	16 mm	125 mm	√				
Glass tubes (DIN)	15.0 mL	16 mm	100 mm	√			√	
Open tube	15.0 mL	17 mm	100 mm	√			√	
Generic tube	–	17.5 mm	125 mm	√				
Generic tube	–	17.5 mm	100 mm		√			
Generic tube	–	17.5 mm	90 mm			√		
Generic tube	–	17 mm	110 mm				√	
Generic tube	–	17 mm	85 mm					√
Standard syringe	10.0 mL	17.5 mm	85 mm	√				



DualSpin rotor with fixed angle buckets



DualSpin rotor with swinging buckets



Yellow spacers



Green spacers

Specifications	Medifuge Small Benchtop Centrifuge
Maximum Capacity	8 x 15 mL (fixed angle) 8 x 10 mL (swinging bucket)
Maximum Speed	300-4,900 rpm, adjustable in increments of 100 rpm
Maximum RCF	3,114 x g (fixed angle) 3,490 x g (swinging bucket)
Time Setting	1-99 minutes, in increments of 1 minute; HOLD
Temperature Range	2°C to 40°C
Control System	Microprocessor
User Interface	Large, brightly-lit LED display
Program Memory	4
Acceleration Profile	1 (standard)
Deceleration Profiles	3 (standard, soft, brake-off)
Acceleration/Deceleration Rates*	24/37 seconds (fixed angle) 24/31 seconds (swinging bucket)
Noise Level	<56 dBA (swinging bucket)
Power Consumption	100-130 W, voltage dependent
Dimensions (H x W x D)	240 x 325 x 450 mm (9.45 x 12.79 x 17.72 in)
Weight	15.5 kg (34.1 lb)
Standards	IEC 61010-1, IEC 61010-2-020, IEC 61010-2-101, EN 61326-1, EN ISO 13485
Certifications	UL, CE, RoHS, CSA, IVD, FDA class 1

\*Deceleration time at standard curve.

Ordering Information	
Cat. No.	Description
<b>75008800</b>	Medifuge centrifuge package, 230 V, 50/60 Hz
<b>75008801</b>	Medifuge centrifuge package, 120 V, 60 Hz
<b>75008802</b>	Medifuge centrifuge package, 100 V, 50/60 Hz
	Each Medifuge centrifuge packages includes: <ul style="list-style-type: none"> <li>- Medifuge small benchtop centrifuge</li> <li>- DualSpin rotor body</li> <li>- Fixed angle buckets (set of 8)</li> <li>- Swinging buckets (set of 8)</li> <li>- Green/short spacers (set of 8)</li> <li>- Yellow/long spacers (set of 8)</li> </ul>

Replacement Parts	
Cat. No.	Description
<b>75008810</b>	DualSpin rotor with fixed angle and swinging bucket sets
<b>75008813</b>	DualSpin rotor body
<b>75008815</b>	DualSpin fixed angle buckets (set of 8)
<b>75008816</b>	DualSpin swinging buckets (set of 8)
<b>75008817</b>	Green/short spacers (set of 8)
<b>75008818</b>	Yellow/long spacers (set of 8)

## [thermoscientific.com/medifuge](http://thermoscientific.com/medifuge)

© 2015 Thermo Fisher Scientific Inc. All rights reserved. All trademarks are the property of Thermo Fisher Scientific Inc. and its subsidiaries unless otherwise specified. BD and BD Vacutainer are trademarks of BD (Becton, Dickinson and Company). Greiner is a trademark of Greiner. Vacuette is a trademark of C.A. Greiner & Sohne. Sarstedt is a trademark of Sarstedt, Walter DBA. Monovette is a trademark of Sarstedt, Inc. Specifications, terms and pricing are subject to change. Not all products are available in all countries. Please consult your local sales representative for details.

**Australia** +61 39757 4300

**Austria** +43 1 801 40 0

**Belgium** +32 53 73 42 41

**China** +800 810 5118 or

+400 650 5118

**France** +33 2 2803 2180

**Germany national toll free** 0800 1 536 376

**Germany international** +49 6184 90 6000

**India toll free** 1800 22 8374

**India** +91 22 6716 2200

**Italy** +39 02 95059 552

**Japan** +81 3 5826 1616

**Netherlands** +31 76 579 55 55

**New Zealand** +64 9 980 6700

**Nordic/Baltic/CIS countries**

+358 10 329 2200

**Russia** +7 812 703 42 15

**Spain/Portugal** +34 93 223 09 18

**Switzerland** +41 44 454 12 12

**UK/Ireland** +44 870 609 9203

**USA/Canada** +1 866 984 3766

**Other Asian countries** +852 2885 4613

**Countries not listed** +49 6184 90 6000

**Thermo**  
SCIENTIFIC

A Thermo Fisher Scientific Brand