



WHIRL-PAK®
Filtration Group

PRODUCT GUIDE

VOLUME 63



NAVIGATING ALL INDUSTRY NEEDS

SAMPLING + TESTING

Explore the advantages Whirl-Pak and Sludge Judge products offer industry experts around the world.

WELCOME TO WHIRL-PAK® COLLECTION & TESTING PRODUCTS

With Whirl-Pak you can expect simpler, safer and more productive solutions for all your sampling and testing needs. With over 60 years of proven reliability, our high-quality products can help you ensure accurate results, from the field to the lab.

WHAT'S INSIDE...

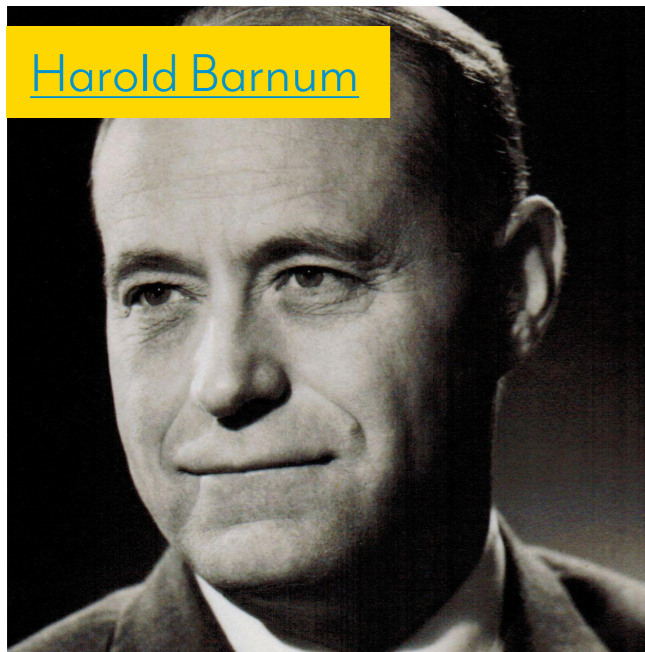
WHAT MAKES US DIFFERENT? Why Whirl-Pak is more than your ordinary closure bag.	03
THE WHIRL-PAK ADVANTAGE Learn more about our Gold-Standard Advantage.	07
FEATURED COLLECTIONS See how Whirl-Pak media containers and Sludge Judge collection tools help ensure accurate and effective results.	09
SUSTAINABILITY STUDY Review the cost and time-reduction benefits of Whirl-Pak bags when compared to bottles.	13
YOUR PATHWAY TO SUCCESS Need help getting started on your transition to a new media collection source? We can help!	17
PRODUCT INDEX Find a listing of all current Whirl-Pak®, Filtration Group products	19

WHIRL-PAK®
Nasco WHIRL-PAK®

ABOUT OUR COMPANY

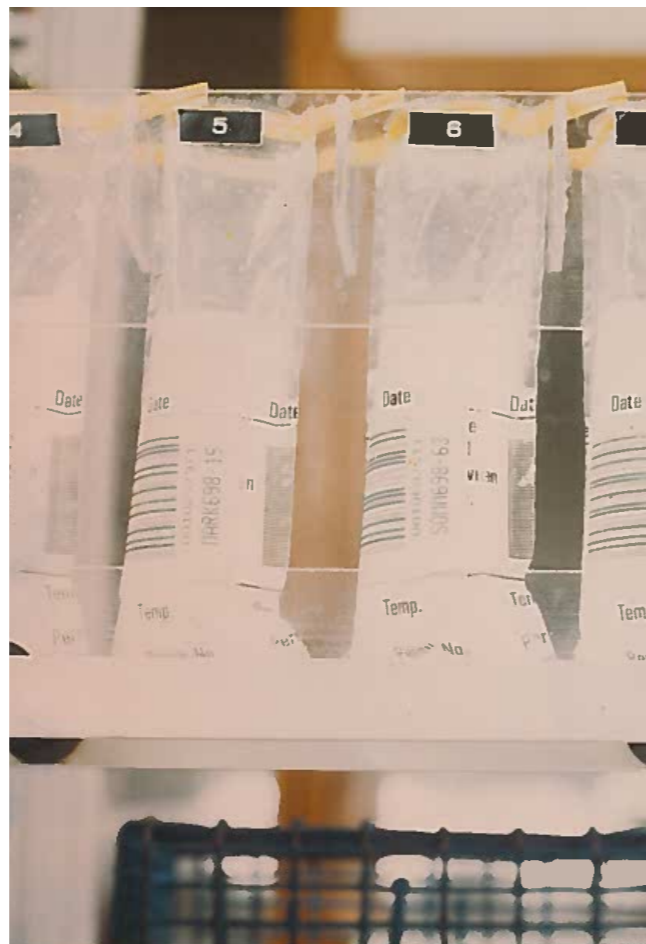
It all began with milk. In the early 1950s, milk was transported in bulk tanks after being collected from dairy farms along a specific route. With each farm's product becoming combined in one blend, farmers soon began to voice concerns over the potential risk for a reduction in overall milk quality. Taking up the issue in 1954, Harold Barnum, a leading authority in the milk sanitation industry, developed a process called the "Universal Sampling Procedure." With this method, a milk truck driver could collect milk samples from each farm and test it prior to transport in order to ensure its quality throughout the process. Because of the effectiveness of this testing, Barnum soon saw a need for mass production of leak-proof closure bags, and Whirl-Pak was officially established in 1959. Because Barnum transformed the dairy industry, he began to explore quality assurance testing and sampling in other industries, such as food, beverage, and water. Today we live in a safer, healthier world thanks to Barnum's vision, and our business continues to thrive because of his tireless work.

Harold Barnum



At Whirl-Pak, Filtration Group we continue to strive for excellence with secure sampling bags that ensure the safety of consumers while improving efficiencies in processing facilities and laboratories. As quality management policies and regulation requirements change, the health and safety of the consumer depends on the accuracy of your test results. Whirl-Pak can help you deliver the best possible outcome — each and every time.

As a part of Filtration Group, we will continue to deliver solutions that best fit the needs of our customers and improve their processes. It is our mission to make the world safer, healthier, and more productive.



keeping liquid samples safe
SINCE 1959

OUR PRODUCT DIFFERENTIATORS



Post-Manufacturing Sterilization and Results You Can Trust

Your time is important, and you should never worry about the validity of your test results due to a faulty sampling container. Whirl-Pak products undergo post-manufacturing sterilization and quality assurance testing at a medical-grade, ISO-certified facility known as +1 Sterilization®



Superior Film Strength

Have you dealt with cracks in collection containers, or film bursts in other closure bags? Our exceptionally clear film makes Whirl-Pak closure bags able to withstand vigorous drop, dart and burst testing for increased reliability and durability assurance.



Liquid Locking Closure

Currently using bottles? Not convinced a 'bag' can contain liquid without leaks? Experience the Whirl-Pak difference and reach out to us at contact@whirl-pak.com.



Continuous Perimeter Seal

Don't waste time on popped-tops or leaky containers. You need a solution that can withstand impact, pressure, and a broad range of temperatures. Whirl-Pak's welded seams offer guaranteed protection and reliability.



Trusted by Experts for Over 60 Years

Proprietary design elements of Whirl-Pak bags exceed the commodity and have gained trust of field and lab technicians within the largest multinational brands, will you be next?

L-PAK®

WHIRL-PAK®

WHIRL-PAK®

SMARTER SAMPLING SOLUTIONS

5

Regardless of the task at hand, you need the right equipment to get the job done efficiently and effectively. Whirl-Pak®, Filtration Group can be a reliable partner for helping you achieve success.

With Smarter Sampling Solutions, we provide the tools and equipment to collect, test and store water samples.

In addition to a portfolio that supports your facility from start to finish, you can rely on consistent quality and customer service.

Our featured collections (at right) support all industry applications in collection of solids and liquids by understanding the needs of field technicians, operators, treatment technicians, lab technicians, environmental analysts and scientists, quality assurance professionals, research chemists, and more.

Our portfolio of sterilized bags supports collection, testing and storage needs by offering a one-touch container solution that saves you time while reducing unnecessary costs.

There's never been a better time to try or expand your inventory of our Smarter Sampling Solutions. We can help you reduce waste and cost while increasing sustainability and providing a pathway to success at your facility.

Take the lead, and make the change today.

FEATURED COLLECTIONS



WHIRL-PAK® CLOSURE BAGS

Closure bags are a more sustainable solution for the bottles currently used today.

The Thio-and Stand-Up bags are specifically designed to help increase efficiency while reducing costs of liquid sample collection. In addition, the Standard, Filter, and Sponge bags can also be utilized for quality-assured results.

Application: Collect, Test, Sample, Store

Whirl-Pak Bags - See more at www.whirl-pak.com

THIO-BAG STAND-UP STANDARD FILTER



COLLECTION TOOLS

Sludge and liquid collection tools that help maximize efficiency.

Whether you're working with wastewater, drinking water, or production cycles, the customer-favorite Sludge Judge® series, including the Sludge Nabber and Swing Sampler, is a cost-effective solution that offers maximum quality with increased efficiency.

Application: Collect

Sludge Judge Series - See more tools at www.whirl-pak.com

SJ UNIT SJ ULTRA SJ II UNIT



STORAGE

Storage racks for ease of mobility between locations or stations within the lab.

Our storage racks are comprised of fused, 12-gauge steel finished with an electrostatic powder coating for a durable, lightweight, and easy-to-clean solution.

Application: Test, Store, Transport

Compartments - Watch for NEW racks on www.whirl-pak.com

ONE TWELVE TWENTY

6

INTENTIONAL DESIGN

THE GOLD STANDARD ADVANTAGE

Eliminate added costs, time and uncertainty with the most trusted, gold-standard closure bag utilized around the world. Whirl-Pak bags are intentionally designed with one-of-a-kind features that ensure a leak-proof, sterilized, easy-to-use container for results you can trust – whirl, twirl or fold, it's not Whirl-Pak's premium quality if it doesn't have Whirl-Pak's new trademarked yellow tape.

7

POST-MANUFACTURING STERILIZATION

- increased sample integrity
- save time with a sterilized container for your samples
- +1 Sterilization ensures sterilization with access to sterility documentation

PUNCTURE-PROOF CLOSURE TABS

- tape extends beyond wire to eliminate sharp ends and provide a sturdy grip
- wire tabs hold the top open for easy access to add to or remove sample
- create a pour spout by pinching the wire for easy dispensing
- worry-free, no-leak closure for sample integrity

OPENING PULL TABS

- for easy opening
- non-slip textured Tyvek®
- our pull tabs are designed to keep hands away from the opening of the bag to retain the sterilized state of the inner bag, assuring samples are free of contamination.
- when comparing to other closure bags, can you ensure the design allows for a aseptic handling?

CONVENIENT WRITE-ON STRIP

- make labelling quick and EASY with pen or marker, can your current container say that?
- clear sample identification
- for organization & traceability

BLENDED, VIRGIN POLYETHYLENE FILM

- you can feel the difference!
- exceptional clarity
- superior strength
- sterilized after manufacturing
- FDA approved for food contact

CONTINUOUS PERIMETER SEAL

- maximum protection against leaks
- as the ONLY closure bag on the market with welded seams, we are the most comparable to a rigid plastic container



So you can easily recognize quality, we're changing all Whirl-Pak closure bags over to the trademarked yellow tape!

NEW FEATURES! YOU ASKED, WE LISTENED.

LIQUID LOCKING CLOSURE LINE

You and your team will never second-guess how many times the closure should be rolled or whirl'd down for a secure, leak-proof closure! Your indicator is now on the bag!



FILL LINE

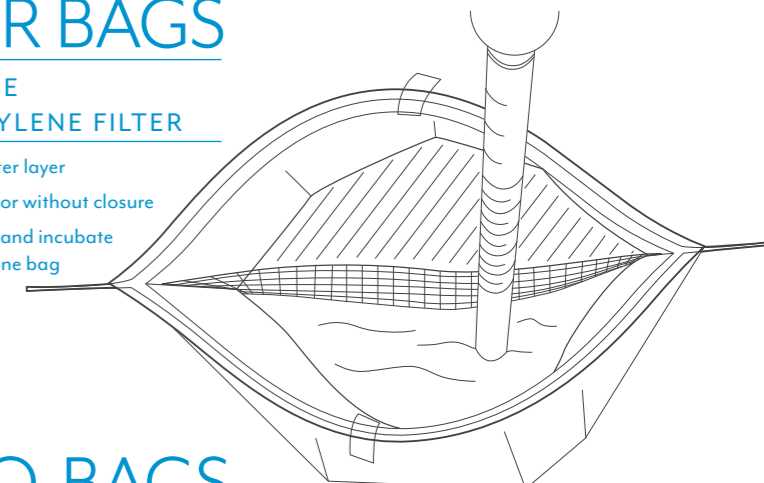
Collecting a sample right from the source? Separating raw samples in the lab? The new fill lines on ALL THIO-BAGS provide fill accuracy of ±.5, saving you hands-on time and supplies.



FILTER BAGS

FULL-PAGE POLYETHYLENE FILTER

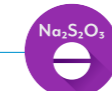
- 330 micron filter layer
- available with or without closure
- collect, blend, and incubate samples with one bag



THIO-BAGS

THE TABLET IS ALREADY IN THERE

- manufactured with a sodium thiosulfate tablet in the bag for chlorine neutralization

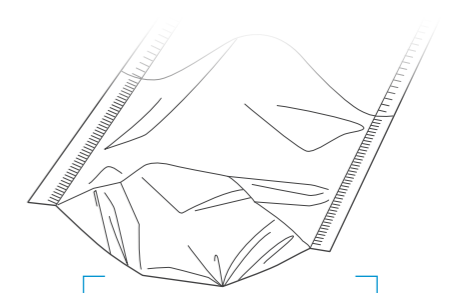


GUSSETED BAG BOTTOMS FOR SELF-STANDING EASE

- no need for expensive and bulky bottles
- allows user to perform functions with both hands
- perfect for both liquids and solids



STAND-UP BAGS





THIO-BAGS®

EPA approved for more efficient microbiological water sampling and analysis.

Thio-Bags are specifically designed with a thiosulfate tablet already in the bag for sampling chlorinated water from municipalities, swimming pools, waste water, and other areas to test for fecal coliforms or other bacteria. Available in both a flat and stand-up bag.

STYLE/SIZE

STAND-UP

118 mL	296 mL	503 mL	1,006 mL
--------	--------	--------	----------

FLAT

118 mL	296 mL
--------	--------



STANDARD BAGS

First sterilized closure bag to market in 1959 and still a customer favorite.

Standard bags support your most basic collection and testing needs. Our standard bags, as will all of Whirl-Pak's sterilized sampling bags are R-Nase, D-Nase, Pyrogen and BPH free and comply with regulatory and industrial requirements of the FDA, USDA, HACCP and EPA.

SIZES

118 mL	207 mL	384 mL	532 mL
710 mL	1,065 mL	1,627 mL	2,041 mL

For a full listing of Standard Bag offering, see page 19.



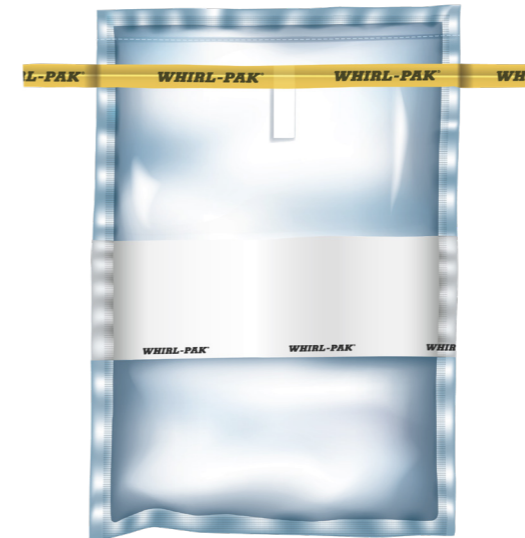
STAND-UP BAGS

Self-standing bag works like a bottle without the cost and storage constraints.

The Stand-Up bags have a gusseted bottom that unfolds when a sample is placed inside, allowing the bag to stand upright. By replacing bottles with Whirl-Pak Stand-Up bags you will save on product and disposal costs, have a guaranteed sterilized container, ensure for a safe and clean lab with shatterproof material, and use only a fraction of the storage and disposal space.

SIZES

118 mL	532 mL	710 mL	
1,065 mL	1,242 mL	2,041 mL	4,081 mL



WRITE-ON BAGS

Convenient write-on strip makes labeling quick and easy for clear sample identification.

Write-On bags offer a feature for operational organization and traceability. Pen or marker, Whirl-Pak's film will dry quickly for a streak free, and quick labeling of your samples.

SIZES

118 mL	207 mL	384 mL	532 mL
710 mL	1,065 mL	1,627 mL	5,441 mL

For a full listing of Write-On Bag offering, see page 19.



FILTER BAGS

Easy transportation of samples from collection site to the lab and incubation.

Our Full Page Filter Bags are perfect for collecting, blending and pipetting. The filter layer inside the bag is sealed into the sides and bottom perimeter allowing liquids of a blended sample to transfer through the 330 micron filter, while solids remain separate and contained. Efficient and safe sampling.

SIZES

207 mL	710 mL	*1,627 mL	
2,041 mL	2,721 mL	4,081 mL	*option with or without closure



POLYURETHANE SPONGE BAGS

Easily cut through bio-films with our non-toxic, allergen free, polyurethane sponge.

The premium solution in environmental surface sampling, captured in the customer favorite's Write-on bag. Medical grade polyurethane sponges are super absorbent and resistant to tears, no more residue left behind when breaking through bio-films!

STYLES

HYDRATED with HICAP™ BROTH

PolyProbe™	PolySponge™
------------	-------------

DRY

PolyProbe™



SLUDGE JUDGE® SERIES

Take accurate readings of settle-able solids of 5% or less in a variety of liquids.

Find the right fit for your needs in our Sludge Judge series. Whether you need the complete unit or a replacement part, we have the size you need for a cost-and time-efficient solution.

The Sludge Judge and Sludge Judge II differ in diameter. SJ II offers an additional ¼", and while the Sludge Judge Ultra is comparable in size to the Sludge Judge, it is differentiated by the polycarbonate treatment. Sludge Judge Ultra is treated with an ultraviolet stabilizer to help reduce deterioration from the sun's harmful rays.

For individual components visit www.whirl-pak.com

SJ UNIT

SJ ULTRA

SJ II UNIT



STORAGE RACKS

Easy transportation of samples from collection site to the lab and incubation.

Made of 10-and 12-gauge steel fused together for strong joints and straight lines. Racks are finished with an electro-statically applied powder coating for a durable and easy-to-clean finish which will stand up to many laboratory materials.

COMPARTMENTS

ONE

TWELVE

TWENTY



SWING SAMPLER

Intentionally designed for those collecting samples from a horizontal flowing stream.

Are you in need of an easy-to-use, time saving sample collection tool for horizontal flowing streams such as a sewer? Then the Swing Sampler is specially designed for you! The end of the sampler swings, allowing collection from different angles, including 90°.

Available in two sizes, the swing sampler extends to meet your needs.

SIZES

6-12 ft.

8-24 ft.



SLUDGE NABBER

Make sample collection of liquids fast and easy.

The Sludge Nabber is an adjustable aluminum pole that extends from 1.22 to 1.99 m (4-6½" ft.). Collection containers range from 250 -1,000 mL and can be placed in the base and held in place with an adjustable locking ring.



FOR ALL
WHIRL-PAK®
PRODUCT
INFORMATION
AND AVAILABILITY,
PLEASE SEE
PRODUCT INDEX ON
PAGES 19-21.

SMARTER SUSTAINABILITY

MEET SUSTAINABILITY TRANSFORMATION GOALS

When compared to rigid plastic containers, studies* have shown that Whirl-Pak bags deliver a more cost-effective alternative to non-flexible containers. But that's not all. Because Whirl-Pak bags also require fewer materials and less energy and water to produce, thus leaving a lower overall impact on the environment.



REDUCE WASTE + ENVIRONMENTAL IMPACT



LESS MATERIAL

Whirl-Pak's closure bags use **5-10x less material** than rigid containers.



LESS WATER

The manufacturing process of Whirl-Pak closure bags use **10x less water** than rigid containers.



LESS EMISSIONS

Throughout its life-cycle, a Whirl-Pak bag generates **5x less emissions**.



REDUCE SPEND + HANDS-ON TIME



SPACE/STORAGE

Flexible storage containers, such as Whirl-Pak bags, are more efficient in all space and storage scenarios.



TRANSPORTATION

Lower shipping costs and overall environmental impact when switching from bottles to Whirl-Pak bags.



DISPOSAL

Save on disposal costs and service frequencies while increasing efficiency in the disposal process.

*A study was performed to identify the sustainability benefits when comparing one-time-use rigid containers to Whirl-Pak's Thio-Bags. Rigid containers used in this comparison included PP, PET and HDPE Bottles.

PATHWAY TO SUCCESS

COST EFFECTIVE • IMPROVED USER EXPERIENCE • WASTE REDUCTION • DECREASE RISK

Make the switch

Are you ready to make the switch from non-flexible containers to Whirl-Pak closure bags, but you're not quite sure where to start? At Whirl-Pak® we can help you understand the important cost-reduction benefits for both your team and your facility in equipment, media, consumables, and more. Plus, we'll help you reduce hands-on time and reduce plastic waste — all while maintaining regulatory requirements.



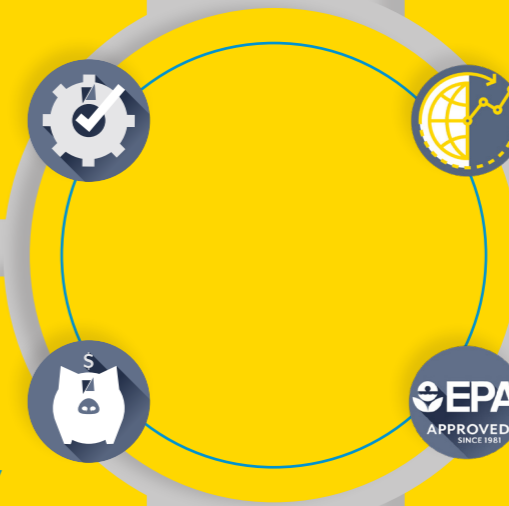
IMPLEMENTATION PAIN POINTS ADDRESSED

Q: Is there a significant learning curve in the field or in the lab?
A: Multinational brands have reported a one-week learning curve.

Q: Will this change require significant investments?
A: Multinational brands that have rolled out the conversion from bottles to bags have only captured savings.

Q: Are Whirl-Pak closure bags available through international distribution channels?
A: Whirl-Pak is available world-wide through best-in-class partners.

Q: Do Whirl-Pak bags meet federal regulations?
A: Whirl-Pak bags are R-Nase, D-Nase, Pyrogen and BPH free and comply with FDA, USDA, HACCP and EPA.



SUCCESSFUL ROLL-OUT

You recognize the cost, waste, and time-saving opportunities of making the switch from bottles to bags, and you have the data to prove it. But now what?

- 1 **DEFINE: MAP OUT RAW MATERIAL AND FINISHED PRODUCT TESTING**
 - Put together a list of bottles or other bag sizes currently used in your process. We'll provide a comparable list of products to streamline skus and suppliers utilized in your facility.
 - Where a bottle was once used - is there a stability concern on the scale or in the incubator? We can recommend solutions.
- 2 **INFORM: NOTIFY PURCHASING AND SERVICES OF CHANGE**
 - Provide a Whirl-Pak product list to your purchasing agent. Be sure no substitutes are made as the Whirl-Pak brand is necessary for risk aversion.
 - Notify disposal services of changes – frequency and volume will be reduced.
- 3 **IDEATE AND EMPATHIZE: MEET WITH TEAMS TO CAPTURE THEIR CONCERNS**
 - Meet with those collecting and analyzing samples to address questions or concerns. – Potential questions might include: Will this take more time? How does this impact other portions of my job? We've always done it this way, why change now?
 - Our team is available to provide resources and training, so your team understands the user-friendly benefits of Whirl-Pak bags, and how this will help make their jobs safer and more efficient.
- 4 **TEST: SET UP PRODUCT AND TESTING STATIONS**
 - Make yourself available for one-week to troubleshoot with your team any challenges encountered in the cut-over stage.
 - After launch week, users are comfortable with the change and embrace the positive impacts beyond those mapped out for business efficiencies.

From Ideation to Implementation

We'll guide you in the following areas while offering continued implementation support and product expertise.

- Streamline raw material and finished product testing
- Product documentation and certifications
- Sustainability benefits - reduction of waste
- Reducing costs (equipment, media, consumables, hands-on time)
- Disposal time and cost savings
- Maintaining regulatory requirements
- Q&A product application session
- User training and solutions
- Liquid-locking closure training
- Our team is available to provide further insights on value-added product application opportunities for seamless implementation of Whirl-Pak products throughout your collection and analysis process.

A WELL-KNOWN BRAND RECENTLY SWITCHED TO WHIRL-PAK IN THE LAB AND SAVED **1 METRIC TON** OF WASTE IN ONLY ONE YEAR!

LIQUID CONTAINERS DOSED & UNDOSED

Your Smarter, sustainable solution for liquid sample collection and testing

SIZES - DOSED, Whirl-Pak Stand Up Thio-Up Bags

100 mL 300 mL 500 mL 1,000 mL

SIZES - UNDOSED, Whirl-Pak Stand-Up Bags see more on pg. 19

118 mL 532 mL 710 mL 1,065 mL

STAND-UP BAG WHIRL-PAK

WHIRL-PAK® THIO-BAG®

YELLOW TAPE

Whirl-Pak's trademark color for confirmation of our gold-standard quality

*Dosed product improvements for an improved user experience

LIQUID LOCKING CLOSURE LINE*

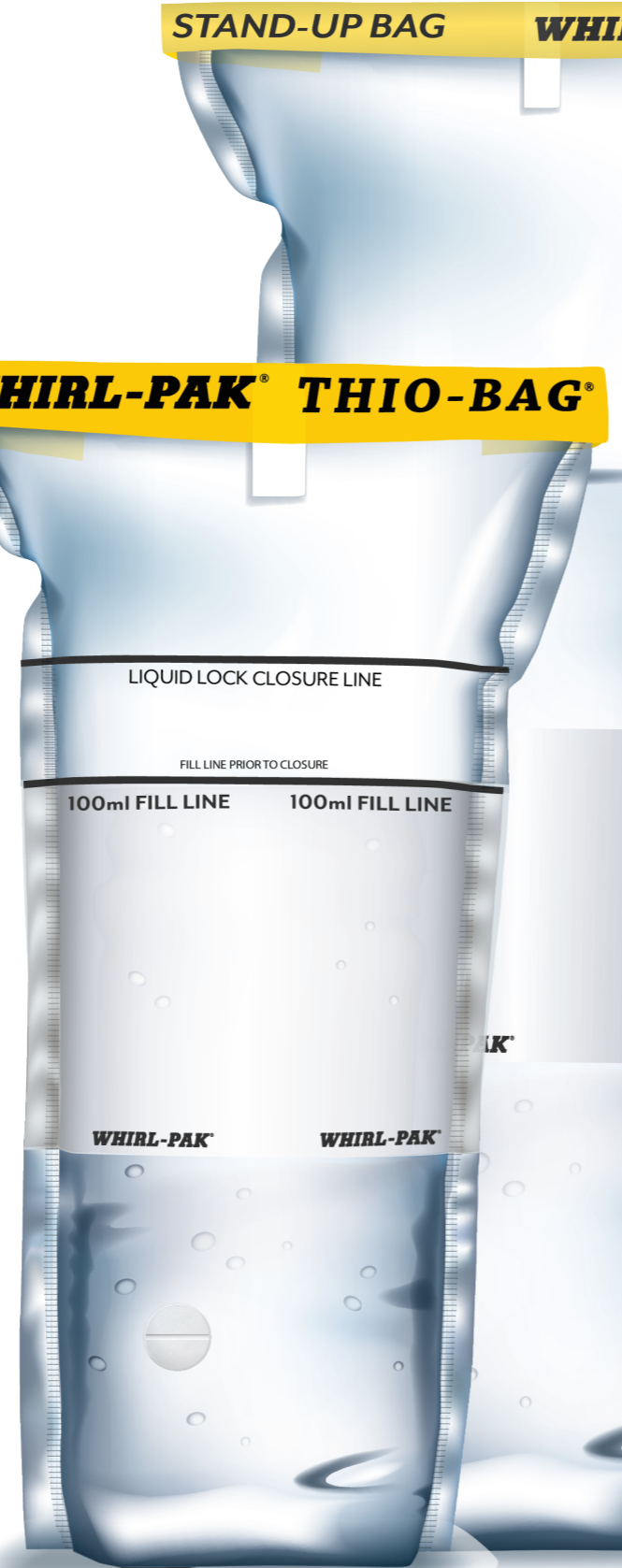
Never second-guess how many times the closure should be rolled or whirled down for a secure, leak-proof closure!

FILL LINE*

Collecting a sample right from the source? Separating raw samples in the lab? The new fill lines on ALL THIO-BAGS provide fill accuracy of ± 5 , saving you hands-on time and supplies.

CUSTOMER FAVORITE FEATURES HERE TO STAY

- A** PUNCTURE-PROOF CLOSURE TABS
Wire tab closure holds bag open for easy access to fill sampling contents
- B** POST-MANUFACTURING STERILIZATION
Our +1 Sterilization® process improves sample integrity
- C** THIOSULFATE TABLET (Dosed, Thio-Bag Only)
No need for sample transfer or additional media, the tablet is in the bag
- D** GUSSETED BOTTOM
Self-standing gusseted bags, a comparable conversion from bottles



500 BAGS VS. 500 BOTTLES

Space saving collection container

GUARANTEED STERILE
Manufactured according to quality management systems ISO9001:2015

- o Uses less shelf space
- o Easier disposal
- o Durable
- o Lower shipping costs
- o Built-in closure
- o Lower total cost
- o EPA approved



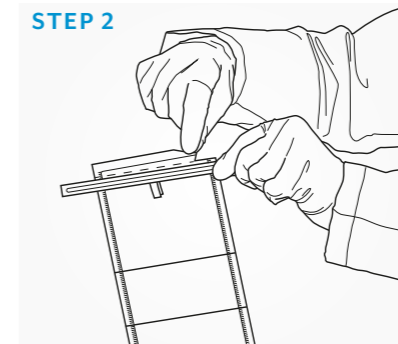
WHIRL YOUR WAY TO A LIQUID LOCKING CLOSURE

STEP 1



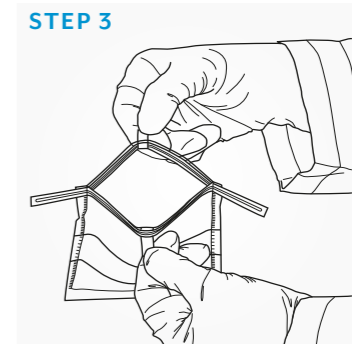
Label your sample

STEP 2



To open, tear off the top along the perforation.

STEP 3



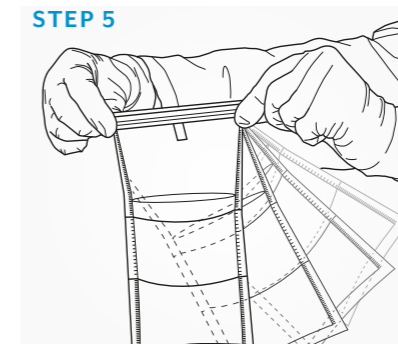
Use the Tyvek® pull tabs to open without contamination.

STEP 4



Place liquid sample in bag.

STEP 5



Hold bag by the tabs and whirl 3 to 4 times to make a seal.

STEP 6



Bring the two wire ends together and twist tie them.

WHIRL-PAK PRODUCT INDEX

MFG. NO.	WIRE STYLE	VOLUME		SIZE		THICKNESS	BAGS/BOX
		FL OZ.	ML	IN.	CM		
WHIRL-PAK STANDARD BAGS: Plain, sterilized closure bags							
B01009	Round	2 Fl oz.	59 mL	3" W x 5" L	7.5 x 12.5 cm	2.25 mils	500
B00679	Round	4 Fl oz.	118 mL	3" W x 7 1/4" L	7.5 x 18.5 cm	2.25 mils	500
B00992	Round	7 Fl oz.	207 mL	3 3/4" W x 7" L	9.5 x 18 cm	3 mils	500
B01018	Round	13 Fl oz.	384 mL	5 1/4" W x 7 1/2" L	13 x 19 cm	3 mils	500
B00736	Round	18 Fl oz.	532 mL	4 1/2" W x 9" L	11.5 x 23 cm	2.5 mils	500
B01020	Round	24 Fl oz.	710 mL	6" W x 9" L	15 x 23 cm	3 mils	500
B01063	Round	24 Fl oz.	710 mL	6" W x 9" L	15 x 23 cm	4 mils	500
B00990	Round	27 Fl oz.	798 mL	5" W x 12" L	12.5 x 30.5 cm	3 mils	500
B00994	Round	36 Fl oz.	1,065 mL	5" W x 15" L	12.5 x 38 cm	3 mils	500
B01027	Round	42 Fl oz.	1,242 mL	6" W x 15" L	15 x 38 cm	3 mils	500
B01532	Round	55 Fl oz.	1,627 mL	7 1/2" W x 12" L	19 x 30 cm	3 mils	500
B01323	Round	69 Fl oz.	2,041 mL	7 1/2" W x 15" L	19 x 38 cm	3 mils	500
WHIRL-PAK WRITE-ON BAGS: Sterilized closure bag with additional benefit of a white write-on strip							
B01067	Round	1 Fl oz.	29 mL	2 1/2" W x 5" L	6.5 x 12.5 cm	2.25 mils	500
B01064	Round	2 Fl oz.	59 mL	3" W x 5" L	7.5 x 12.5 cm	2.25 mils	500
B01339	Flat	4 Fl oz.	118 mL	3" W x 7 1/4" L	7.5 x 18.5 cm	2.25 mils	500
B01062	Round	4 Fl oz.	118 mL	3" W x 7 1/4" L	7.5 x 18.5 cm	2.25 mils	500
B01489	Round	7 Fl oz.	207 mL	3 3/4" W x 7" L	9.5 x 18 cm	3 mils	500
B01490	Round	13 Fl oz.	384 mL	5 1/4" W x 7 1/2" L	13 x 19 cm	3 mils	500
B01065	Round	18 Fl oz.	532 mL	4 1/2" W x 9" L	11.5 x 23 cm	2.5 mils	500
B01341	Flat	18 Fl oz.	532 mL	4 1/2" W x 9" L	11.5 x 23 cm	2.5 mils	500
B01297	Round	24 Fl oz.	710 mL	6" W x 9" L	15 x 23 cm	3 mils	500
B01196	Round	24 Fl oz.	710 mL	6" W x 9" L	15 x 23 cm	4 mils	500
B01491	Round	27 Fl oz.	798 mL	5" W x 12" L	12.5 x 30.5 cm	3 mils	500
B01195	Round	55 Fl oz.	1,627 mL	7 1/2" W x 12" L	19 x 30 cm	4 mils	500
B01515	Round	69 Fl oz.	2,041 mL	7 1/2" W x 15" L	19 x 38 cm	3 mils	500
B01445	1 Flat, 1 Round	92 Fl oz.	2,721 mL	10" W x 15" L	25.4 x 38 cm	4 mils	250
B01446	1 Flat, 1 Round	123 Fl oz.	3,638 mL	10" W x 20" L	25.4 x 50.8 cm	4 mils	250
B01447	1 Flat, 1 Round	184 Fl oz.	5,441 mL	15" W x 20" L	38 x 50.8 cm	4 mils	100
WHIRL-PAK STAND-UP (UNDOSED) BAGS: Self-standing sterilized closure bags with a white write-on strip							
B01364	Round	4 Fl oz.	118 mL	3" W x 7 1/4" L	7.5 x 18.5 cm	2.25 mils	500
B01365	Round	18 Fl oz.	532 mL	4 1/2" W x 9" L	11.5 x 23 cm	3 mils	500
B01401	Round	24 Fl oz.	710 mL	6" W x 9" L	15 x 23 cm	3 mils	500
B01449	1 Flat, 1 Round	36 Fl oz.	1,065 mL	5" W x 15" L	12.5 x 38 cm	4 mils	250
B01450	1 Flat, 1 Round	42 Fl oz.	1,242 mL	6" W x 15" L	15 x 38 cm	4 mils	250
B01451	1 Flat, 1 Round	69 Fl oz.	2,041 mL	7 1/2" W x 15" L	19 x 38 cm	4 mils	250
B01542	1 Flat, 1 Round	138 Fl oz.	4,081 mL	15" W x 15" L	38 x 38 cm	4 mils	100
WHIRL-PAK STAND-UP THIO-BAGS (DOSED): Self-standing sterilized closure bags with a white write-on strip and a thiosulfate tablet included in the bag							
			* LIQUID FILL LINE				
B01402	Round	4 Fl oz.	100 mL	3" W x 7 1/4" L	7.5 x 18.5 cm	2.25 mils	100
B01403	Round	10 Fl oz.	300 mL	4 1/2" W x 9" L	11.5 x 23 cm	3 mils	100
B01601	1 Flat, 1 Round	17 Fl oz.	500 mL	6" W x 9" L	15 x 23 cm	3 mils	100
B01603	1 Flat, 1 Round	34 Fl oz.	1,000 mL	6" W x 15" L	15 x 38 cm	4 mils	100
WHIRL-PAK THIO-BAGS: Sterilized closure bags with a white write-on strip and a thiosulfate tablet included in the bag							
			* LIQUID FILL LINE				
B01040	Round	4 Fl oz.	100 mL	3" W x 7 1/4" L	7.5 x 18.5 cm	2.25 mils	100
B01254	Round	10 Fl oz.	300 mL	4 1/2" W x 9" L	11.5 x 23 cm	2.5 mils	100

WHIRL-PAK PRODUCT INDEX (continued)

MFG. NO.	WIRE STYLE	VOLUME		SIZE		THICKNESS	BAGS OR UNITS/BOX	
		FL OZ.	ML	IN.	CM			
WHIRL-PAK FULL-PAGE FILTER BAGS: Sterilized bags with a white write-on strip and a 330 micron filter layer								
B01385	Round	7 Fl oz.	207 mL	3 3/4" W x 7" L	9.5 x 18 cm	3 mils	250	
B01348	Round	24 Fl oz.	710 mL	6" W x 9" L	15 x 23 cm	4 mils	250	
B01318	Round	55 Fl oz.	1,627 mL	7 1/2" W x 12" L	19 x 30 cm	4 mils	250	
B01547	NO CLOSURE	55 Fl oz.	1,627 mL	7 1/2" W x 12" L	19 x 30 cm	4 mils	250	
B01416	Round	69 Fl oz.	2,041 mL	7 1/2" W x 15" L	19 x 38 cm	4 mils	250	
B01488	1 Flat, 1 Round	92 Fl oz.	2,721 mL	10" W x 15" L	25.4 x 38 cm	4 mils	100	
B01525	1 Flat, 1 Round	138 Fl oz.	4,081 mL	15" W x 15" L	37.5 x 37.5 cm	4 mils	100	
WHIRL-PAK SPECIALTY FILTER BAGS								
B01239 - ROUND BOTTOM	Round	52 Fl oz.	1,538 mL	7" W x 13" L	18.5 x 33 cm	4 mils	500	
B01421	NO CLOSURE	55 Fl oz.	1,627 mL	7 1/2" W x 12" L	19 x 30 cm	3 mils	1,000	
B01474	NO CLOSURE	184 Fl oz.	5,442 mL	15" W x 20" L	37.5 x 50 cm	4 mils	250	
B01523 - FILTER SLEEVE	330 micron material sleeve fits 10 mL pipette to prevent pipette tip from plugging with solid particles.							500
WHIRL-PAK BLACK BAGS: Opaque, sterilized closure bag with a white write-on strip								
B01472	Round	4 Fl oz.	118 mL	3" W x 7 1/4" L	7.5 x 18.5 cm	2.5 mils	500	
B01418	Round	18 Fl oz.	532 mL	4 1/2" W x 9" L	11.5 x 23 cm	2.5 mils	500	
B01558	Round	55 Fl oz.	1,627 mL	7 1/2" W x 12" L	19 x 30 cm	2.5 mils	500	
WHIRL-PAK SPECIALTY BAGS: Specific Market use, added features								
B01538 - USDA	Round	24 Fl oz.	710 mL	6" W x 9" L	15 x 23 cm	3 mils	500	
B01363 - NOPA	Round	18 Fl oz.	532 mL	6" W x 12" L	15 x 30 cm	4 mils	500	
B01324 CARCASS SAMPLING	Each Meat and Poultry Carcass Sampling Kit includes a Sponge, Template, Peptone and Whirl-Pak Bag							25
B01319 POULTRY BAG	NO CLOSURE	184 Fl oz.	3,638 mL	15" W x 20" L	37.5 x 50 cm	2 mils	250	
B01255 W/POCKET	Round	24 Fl oz.	710 mL	6" W x 9" L	15 x 23 cm	2.5 mils	500	
B01350 B W/BUE SCOOP	Round	18 Fl oz.	532 mL	4.5" W x 9" L	11.5 x 23 cm	2.5 mils	50	
B01350 W/WHITE SCOOP	Round	18 Fl oz.	532 mL	4.5" W x 9" L	11.5 x 23 cm	2.5 mils	50	
WHIRL-PAK POLYURETHANE SPONGE BAGS: Gold-Sponge-Standard for Environmental Monitoring, material is resistant tears with leading absorbency								
HYDRATED POLYPROBE W/ HICAP™				8" L PROBE	20.3 cm L PROBE			
B01592	Round	24 Fl oz.	710 mL	6" W x 9" L	15 x 23 cm	2.5 mils	100	
HYDRATED POLYSPONGE W/ HICAP™								
B01590	Round	18 Fl oz.	532 mL	4 1/2" W x 9" L	11.5 x 23 cm	2.5 mils	100	
B01591	Round	18 Fl oz.	532 mL	4 1/2" W x 9" L	11.5 x 23 cm	2.5 mils	100	
DRY POLYPROBE				8" L PROBE	20.3 cm L PROBE			
B01613	Round	24 Fl oz.	710 mL	6" W x 9" L	15 x 23 cm	2.5 mils	100	
WHIRL-PAK CELLULOSE SPONGE BAGS: Environmental Monitoring								
HYDRATED SPECI-SPONGE								
B01422	Round	18 Fl oz.	532 mL	4 1/2" W x 9" L	11.5 x 23 cm	2.5 mils	100	
B01423 W/GLOVE	Round	18 Fl oz.	532 mL	4 1/2" W x 9" L	11.5 x 23 cm	2.5 mils	100	
DRY SPECI-SPONGE PROBE				8" L PROBE	20.3 cm L PROBE			
B01475	Round	24 Fl oz.	710 mL	6" W x 9" L	15 x 23 cm	2.5 mils	50	
DRY SPECI-SPONGE								
B01245	Round	18 Fl oz.	532 mL	4 1/2" W x 9" L	11.5 x 23 cm	2.5 mils	100	
B01392 W/GLOVE	Round	18 Fl oz.	532 mL	4 1/2" W x 9" L	11.5 x 23 cm	2.5 mils	100	
B01299	Round	55 Fl oz.	1,627 mL	7 1/2" W x 12" L	19 x 30 cm	4 mils	100	
WHIRL-PAK SPONGE ACCESSORIES								
B01593	Sponge Probe Adapter is designed for use with the Whirl-Pak PolyProbe™ or PolySponge™ products listed above.							1
B01457	Whirl-Pak Sponge Pole will make hard to reach jobs easier and more efficient.							1
B01559	Replacement Sponge Holder for Sponge Pole (B01457).							1

WHIRL-PAK PRODUCT INDEX				
MFG. NO.	PRODUCT	DIMENSIONS		UNITS/BOX
WHIRL-PAK SAMPLE COLLECTION ACCESSORIES				
B01550	Yellow Locking Pipe Closures			50
B01595	Yellow and White Locking Pipe Closures			50
B01040 A	Whirl-Pak Sterilized Spoons			100
WHIRL-PAK SAMPLING STORAGE/TRANSPORT SOLUTIONS				
B00751	12 Compartment Carrying Rack	10" W x 10" L x 3 1/2" H	25.4 x 25.4 x 9 cm	1
B01014	20 Compartment Carrying Rack	13 3/4" W x 10 3/4" L x 4" H	34 x 27 x 10.2 cm	1
B01533	1 Compartment Carrying Rack with Handle	7" W x 10" H	17.8 x 25.4 cm	1
WHIRL-PAK SAMPLE COLLECTION TOOLS				
B01310	12 ft. Whirl-Pak Swing Sampler	6' - 12' Extension	1.83 x 3.66 m	1
B01366	24 ft. Whirl-Pak Swing Sampler	24' Extension	7.32 m	1
B01229	Whirl-Pak Sludge Nabber	4' - 6 1/2' Extension	1.22 x 1.99 m	1
WHIRL-PAK SLUDGE JUDGE SERIES				
C09247	Sludge Judge® - 15 ft.	3/4" W x 5' L Sections	1.9 cm x 1.53 m	1
C09252	Sludge Judge® Top Section w/ Rope	3/4" W x 5' L	1.9 cm x 1.53 m	1
C09250	Sludge Judge® Bottom Section w/ Valve	3/4" W x 5' L	1.9 cm x 1.53 m	1
C09251	Sludge Judge® Extension Section	3/4" W x 5' L	1.9 cm x 1.53 m	1
B01355	Sludge Judge® II - Large Capacity	1 1/2" W x 5' L Sections	3.18 cm x 1.53 m	1
B01357	Sludge Judge® II Extension Section	1 1/2" W x 5' L	3.18 cm x 1.53 m	1
B01358	Sludge Judge® II Top Section w/ Rope	1 1/2" W x 5' L	3.18 cm x 1.53 m	1
B01356	Sludge Judge® II Bottom Section w/ Valve	1 1/2" W x 5' L	3.18 cm x 1.53 m	1
B01386	Sludge Judge® Ultra - Super Strong	3/4" W x 5' L Sections	1.9 cm x 1.53 m	1
B01388	Sludge Judge® Ultra Extension Section	3/4" W x 5' L	1.9 cm x 1.53 m	1
B01387	Sludge Judge® Ultra Top Section w/ Rope	3/4" W x 5' L	1.9 cm x 1.53 m	1
B01389	Sludge Judge® Ultra Bottom Section w/ Valve	3/4" W x 5' L	1.9 cm x 1.53 m	1
WHIRL-PAK COLLECTION TOOL ACCESSORIES				
B01291	6 ft. Cleaning Brush for use with Sludge Judge Collection Tools	1" W x 6' L	2.54 cm x 1.83 m	1
B01361	Cleaning Brush for use with Sludge Judge II			1
C09249	Case for Sludge Judge Collection Tools			1
B01354	Replacement Bottle Holder for Whirl-Pak Swing Samplers			1



We are holding ourselves to a higher standard, by shipping our product in the most sustainable, eco-friendly way possible without sacrificing our quality standards.

WE'RE MAKING NOTICEABLE CHANGES TO DO OUR PART

Environmental sustainability is a must in today's business environment, and Whirl-Pak® takes this initiative very seriously. We strive to provide economic and environmentally sustainable product solutions for our customers, while looking to improve opportunities throughout our supply chain, manufacturing, and logistics operations to remain a gold-standard supplier.

One major change coming your way is the conversion from white to kraft inner cartons. This green(er) packaging is comprised of 78.7% recycled material and is 29% more recyclable than the well-known, previously used Whirl-Pak white box.

In addition to providing a more eco-friendly carton, this change enhances your Whirl-Pak experience with a more durable material for shipping and storage. The new kraft-pak inner cartons do not endure the same extensive bleaching process as the white box, a process that decreases the paper's strength. With the added durability of the new kraft material, the cartons can be reused within your facility if necessary for an additional sustainability benefit to your organization.

With this fundamental change, you can expect your product to arrive as pristine as the day it left our manufacturing line, delivering our best-in-class guarantee for quality you can trust.

- Whirl-Pak®

“Change one small thing today and bigger changes will follow”

- Diana Cooper

CONTACT AN APPROVED WHIRL-PAK DISTRIBUTOR FOR PRICING



WHIRL-PAK®

Filtration Group

9501 80th Ave.

Pleasant Prairie, WI. 53158

JOIN US



SCAN ME

Sign-up to join our virtual focus group! Where innovation comes to life.

NAVIGATE SMARTER SAMPLING

To learn more, or to view our entire product portfolio visit www.WHIRL-PAK.COM