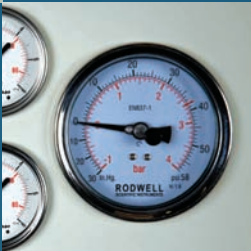
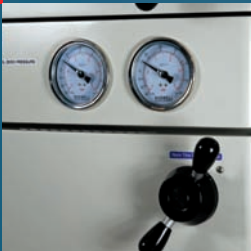




# Rodwell Scientific Instruments: Autoclave Range



 UK Manufactured since 1965

40 - 770 litres, vertical & horizontal loading

# Why specify a Rodwell Autoclave?

## Make the smart choice

Autoclaves are often overlooked in the central role they play in the operation of the modern laboratory. The vast majority of laboratories simply cannot function without one. Therefore, it is the smart buyer who gives such careful consideration to the single piece of equipment so essential to the efficient every day to day running of a laboratory.

**“Spending more will cost you less as a Rodwell autoclave will outlive most competition many times over..”**

Everybody is under constant pressure to reduce costs and save money. However, how smart is the buyer who saves money on the initial purchase, only to incur additional costs in extra maintenance; breakdowns which will ultimately result in the early replacement of an instrument?

Rodwell autoclaves tend to cost more than most of the competition but vast savings are quickly realised due to reduced operating, service and maintenance costs. Not to mention the knock-on costs to the laboratory when an autoclave breaks down. A reliable autoclave not only means an efficient laboratory, but a happier workforce too, which in turn saves money!

## You get what you pay for?

This is certainly the case for cheaper equipment for the reasons mentioned above, but with Rodwell Autoclaves you do not get what you pay for; you get more!

- The highest quality materials
- High pressure pipe work and compression fittings for easy maintenance
- Proven materials, systems and technology
- Control system with more standard features
- Solid construction ensuring many years reliable service
- Upgradeable technology
- Sensible, practical design as opposed to aesthetics
- Safety locks + lock detection systems
- Diagnostic control system that informs the operator of the nature of any faults for quick and simple fault finding.

## Support for your autoclave – a team obsession

Rodwell Scientific Instruments is a division of the Rodwell Engineering Group, a family owned company whose team of engineers have achieved success over the past 50 years simply by doing their best to ensure total customer satisfaction.

## A Global Business

Rodwell Scientific Instruments have been exporting for the past 30 years and have established distributors in many nations all over the world. Our distributors share our commitment for proficient after-sales service, using fully trained engineers with access to the latest technology and total support from the manufacturers they represent.

## Making full use of modern available technology

Email and the internet has allowed us to develop up-to-date software (optional) which allows the scientist to email complete cycles to our technical department for full on-screen diagnosis and set-up recommendations.

## Expertise

Rodwell Engineering Group is a family business founded in 1945. Over the years it has expanded to a multi-faceted engineering company through natural growth, acquisition and shrewd investment. Some of Rodwell's acquisitions have a history spanning back nearly 100 years!

The company also has extensive property and business interests which ensure financial stability even throughout the most turbulent times.

This broad nature of Rodwell Engineering Group's activities plus sound financial foundations ensure that your Rodwell Autoclave is manufactured to the highest engineering standards and can be supported throughout its lifetime.



# Rodwell



**Rodwell Scientific Instruments**  
**Rodwell HTB**  
**Rodwell Bayne**  
**Rodwell Precision Engineering**  
**Rodwell Powell**  
**Rodwell Group Services**  
**Property Investment**

Autoclave manufacturers  
Paper & board Feeders & stackers  
Compressed Air Engineers  
Production & Precision Engineers  
Aerospace Engineers & Inspection  
Central Accounts

**Precision Engineering since 1945**

# Compact Autoclaves

## Phoenix Benchtop

### Design Features

- 40 or 60 litres
- MP25 Control (see page 7)
- Space-saving design
- Single phase 'plug in & play'
- Integral drip tray under each door
- Bench or trolley mounted
- Phoenix 40 has capacity for up to 13 x 1L media bottles
- Can be completely stand alone

### Optional Accessories

- Fan accelerated cooling
- Loading baskets
- Waste discard system
- Condense collector (eliminates need for a plumbed drain service)
- Range of data recording options
- Scale prevention systems
- Automatic fill
- Vacuum air removal systems



Capacities and Dimensions		
Model	Phoenix 40	Phoenix 60
<b>Chamber Capacity:</b>	40 litres	60 litres
<b>Vessel Dimensions (mm):</b>	350Ø x 460 deep	350Ø x 600d deep
<b>Overall Dimensions (mm):</b>	550w x 790h x 710d	550w x 790h x 860d

## Monarch

### Design Features

- 50 or 75 litres
- Counterbalanced lid for easy opening
- MP25 control (see page 7)
- Angled control panel
- Space-saving design
- Exceptionally low loading height (50)
- Fits most fermentation vessels and bioreactors (75)

### Optional Accessories

- Fan accelerated cooling
- Additional loading baskets
- Condense collector (eliminates need for a plumbed drain service)
- Waste discard system
- Range of data recording options
- Automatic fill
- Vacuum air removal systems

### Monarch 50 Features

- Designed to fit underneath a standard bench
- Single phase 3kw 'plug in and play'

### Monarch 75 Features

- Fits up to 3 loading baskets
- Powerful 4kw heater



Capacities and Dimensions		
Model	Monarch 50	Monarch 75
<b>Chamber Capacity:</b>	50 litres	75 litres
<b>Vessel Dimensions (mm):</b>	350Ø x 520 deep	350Ø x 780 deep
<b>Overall Dimensions (mm):</b>	470w x 840h x 690d	470w x 1100h x 690d

# Medium Capacity Autoclaves

## Ensign

### Design Features

- 100 & 125 litres
- MP25 control (see page 7)
- Space-saving design
- Counterbalanced lid for easy opening
- Available in electrically heated version or from a piped steam source

### Formats

- 1) 6 kW in-chamber heating (100)
- 2) 9 kW in-chamber heating (100 & 125)
- 3) Heated from an external steam supply
- 4) Remote steam heated with generator

### Optional Accessories

- Fan accelerated cooling
- Hydraulic loading trolley
- Air ballasting option
- Loading baskets
- Waste discard system
- Drain line condenser for plastic drains
- Range of data recording options
- Scale prevention systems
- Automatic fill
- Vacuum air removal systems



Capacities and Dimensions		
Model	Ensign 100	Ensign 125
<b>Chamber Capacity:</b>	100 litres	125 litres
<b>Vessel Dimensions (mm):</b>	460Ø x 570 deep	460Ø x 723 deep
<b>Overall Dimensions (mm):</b>	560w x 1090h x 800d	560w x 1240h x 800d* 560w x 1240h x 1100d**

\*Without loading step \*\*With loading step

## Ambassador

### Design Features

- 100 or 158 litre variants
- MP25 control (see page 7)
- Cost effective hinge / bolt door
- Space-saving design
- Integral drip tray under door
- Fixed seal

### Formats

- 1) 6 kW in-chamber heating (100)
- 2) 9 kW in-chamber heating (100 & 158)
- 3) Heated by an integrated 9kW steam generator
- 3) Heated from an external steam supply
- 4) Double door "pass through" version available (158L)

### Optional Accessories

- Fan accelerated cooling
- Loading trolley
- Air ballasting option
- Loading baskets
- Waste discard system
- Drain line condenser for plastic drains
- Range of data recording options
- Scale prevention systems
- Automatic fill
- Vacuum air removal systems
- Integrated steam generator



Capacities and Dimensions		
Model	Ambassador 100	Ambassador 158
<b>Chamber Capacity:</b>	100 litres	158 litres
<b>Vessel Dimensions (mm):</b>	460Ø x 610 deep	460Ø x 960 deep
<b>Overall Dimensions (mm):</b>	650w x 1240h x 1160d	650w x 1240h x 1310d

Download product data sheets online: [www.rodwell-autoclave.com](http://www.rodwell-autoclave.com) Telephone: +44 (0) 1268 286646

# Large Capacity Autoclaves (Round Chambers)

## Gemini

**Totally Unique: Two independent autoclaves in one robust frame!**

### Design Features

- 2 x 158 litre vessels
- 316 litre total capacity
- MP25 control (see page 7)
- Independent control of each chamber
- Space-saving design
- Can be used as a clean and dirty autoclave in one frame
- Integral drip tray under each door
- Available in electrically heated version or from a piped steam source
- Integrated steam generator available

### Optional Accessories

- Fan accelerated cooling
- Hydraulic loading trolley
- Air ballasting option
- Loading baskets
- Waste discard system
- Drain line condenser for plastic drains
- Range of data recording options
- Scale prevention systems
- Automatic fill
- Vacuum air removal systems



### Capacities and Dimensions

Model	Gemini 316
Chamber Capacity:	158 litres x 2
Vessel Dimensions (mm):	460Ø x 960 deep (x2)
Overall Dimensions (mm):	650w x 1970h x 1310d

## Sovereign

### Design Features

- 200 & 250 litre variants
- Economy round chamber
- MP25 control (see page 7)
- Cost effective hinge / bolt door
- Space-saving design
- Integral drip tray under door
- Available in electrically heated version or from a piped steam source
- Fixed seal
- Integrated steam generator available

### Formats

- 1) Heated from within the chamber
- 2) Integral steam generator separate from the chamber
- 3) Heated from an external steam supply
- 4) Remote steam heated with generator back-up

### Optional Accessories

- Fan accelerated cooling
- Loading trolley
- Air ballasting option
- Loading baskets
- Waste discard system
- Drain line condenser for plastic drains
- Range of data recording options
- Scale prevention systems
- Automatic fill
- Vacuum air removal systems



### Capacities and Dimensions

Model	Sovereign 200	Sovereign 250
Chamber Capacity:	200 litres	250 litres
Vessel Dimensions (mm):	545Ø x 860 deep	545Ø x 1057 deep
Overall Dimensions (mm):	830w x 1800h x 1450d	830w x 1800h x 1450d

# Large Capacity Autoclaves (Square Chambers)

## Crystal

### Design Features

- 300 litres
- Square section chamber
- MP25 control (see page 7)
- Cost effective hinge / bolt door
- Space-saving design
- Integral drip tray under door
- Available in electrically heated version or from a piped steam source
- Fixed seal
- Integrated steam generator
- Fan accelerated cooling

### Formats

- 1) Integral steam generator separate from the chamber
- 2) Heated from an external steam supply
- 3) Remote steam heated with generator back-up
- 4) Double door "pass-through" version available

### Optional Accessories

- Loading trolley
- Air ballasting option
- Loading baskets
- Waste discard system
- Drain line condenser for plastic drains
- Range of data recording options
- Scale prevention systems
- Automatic fill
- Vacuum air removal systems



Capacities and Dimensions	
Model	Crystal 300
Chamber Capacity:	300 litres
Vessel Dimensions (mm):	510w x 510h x 1030d
Overall Dimensions (mm):	830w x 1800h x 1450d

## Sapphire

### Design Features

- 330, 440, 550, 660 & 770 litre variants
- Square section chamber
- MP25 control (see page 7)
- Reliable 'Hoist and Clamp' door
- Fixed seal
- Integral drip tray under door
- Accelerated water cooling jacket
- Compact
- Integrated steam generator
- Super fast cycle times!

### Formats

- 1) Integral steam generator separate from the chamber
- 2) Heated from an external steam supply
- 3) Remote steam heated with generator back-up
- 4) Double door "pass-through" version available (550, 660 & 770)

### Optional Accessories

- 15 min. 'flash cycle' option
- Loading trolley
- Air ballasting option
- Loading baskets
- Waste discard containers
- Drain line condenser for plastic drains
- Range of data recording options
- Scale prevention systems
- Steam jacket drying
- Vacuum air removal systems



Capacities and Dimensions			
Model	Sapphire 330	Sapphire 440	Sapphire 550
Chamber Capacity:	330 litres	440 litres	550 litres
Vessel Dimensions (mm):	670w x 670h x 745d	670w x 670h x 936d	670w x 670h x 1099d
Overall Dimensions (mm):	980w x 1930h x 1530d	980w x 1930h x 1530d	980w x 1930h x 1530d
Model	Sapphire 660	Sapphire 770	
Chamber Capacity:	660 litres	770 litres	
Vessel Dimensions (mm):	670w x 670h x 1274d	670w x 670h x 1455d	
Overall Dimensions (mm):	980w x 1930h x 1750d	980w x 1930h x 1900d	

Download product data sheets online: [www.rodwell-autoclave.com](http://www.rodwell-autoclave.com) Telephone: +44 (0) 1268 286646

# MP25 Controller & Smartcard

The common control system fitted to every autoclave in the Rodwell range. The MP25 has evolved to be one of the finest laboratory instrument control systems on the market today. What sets this system apart from any other control system is that it is totally interchangeable. The same MP25 control system with any Rodwell autoclave: from a bench top to a large square chambered vacuum machine.

## Total versatility in 25 programs!

### Standard Features

#### 25 programs

Can be programmed and stored by the laboratory supervisor

#### Smart Card Access System

- Allows programs to be stored and locked off by a supervisor
- Operator cards give access to pre-programmed cycles only
- Available with or without operator smartcard access for operator access



#### Load Activated Sterilise Timer

(On/Off) prevents the sterilise timer from starting until the chamber and load have reached set point temperature.

#### Free Steam Timer (adjustable by time)

Holds the chamber at approximately 100°C (without pressurising) for a pre-determined time during the heating period and allows effective steam penetration into the load.

#### Delayed Start (24 hour clock)

Timer option allows the autoclave to be pre-programmed at a pre-determined time so the autoclave completes a cycle just before the lab arrives for work the following morning for pre-prepared warm media.

#### Adjustable Stay Warm (on/off)

Keeps the chamber warm at the end of the cycle for pourable media. This is adjustable to allow the operator to select the optimum temperature.

#### Instrument Cycles (programs 21 to 24 only)

Exhausts the chamber at the end of the cycle for dryer glassware and instruments upon completion.

#### Self Diagnostic

Notifies the operator of any faults. The nature of many faults are clearly displayed on the LCD.

#### Sterilise Fault Warning

Notifies the operator if there has been a power supply problem or the temperature has not been maintained during the cycle.



### MP25 Options

#### Post Cycle Drying

Programs 17 to 20 can be set to control a post-cycle drying heater (cannot be used with in-chamber heating systems unless auto drain or separate steam generator is specified)

#### Cycle Recorders

Cycle recorders are available to record:  
Load temperature - (single channel)  
Load & Chamber temperature (2 channel)  
Load & Chamber temperatures + Pressure (3 channel)

#### Data Printers

Provides a hard copy print out of parameters and readings during the cycle (2 or 3 channel available).

#### Chart Recorders

A complete range of circular and strip type chart recorders are available to provide a graphical representation of chamber conditions during each cycle. The MP25 will switch on the chart recorder only when a cycle is operating in order to save chart paper. A complete range of anything up to 12 channels are available plus a range of independent graphical recorders (1, 2 or 3 channel available).

#### SmartLog™ Cycle Data Recording Software

The ultimate system for autoclave logging. Enables a personal computer to analyse each autoclave cycle in great detail. The software provides a multi-channel readout including a full graphic profile, and the ability to provide remote diagnostic support.

#### USB Memory Logging

For quick and efficient downloading of log data the MP25 is equipped with a USB port for direct data transfer straight to a Rodwell USB Key. The data can then be transferred to a PC for analysis on our SmartLog™ Software.

# USB SmartLog™ System

The MP25 **SmartLog** system from Rodwell Scientific Instruments is revolutionising the way that autoclave cycle data is collected and analysed. In the past data collection would have been carried out by use of a data printer, which meant regular paper re-fills, replacement ink ribbons and reams of paper reports accumulating on the laboratory manager's desk. Now with our USB **SmartLog** system instead of large bulky chart recorders, or paper printers, every cycle is automatically stored to memory, which can then be downloaded and analysed in our **SmartLog** software.



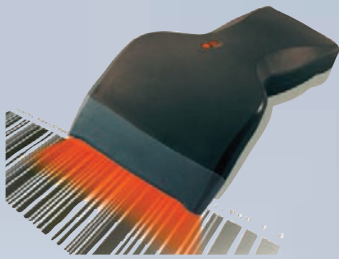
## Complete Package

The **SmartLog** system, comprises a specially adapted USB memory stick and our **SmartLog** software package. When connected to our MP25 controller, each time a cycle is carried out, all the cycle information is stored directly to the memory stick. The data files can then be downloaded to the PC for analysis at a later date. The software offers quick and easily analysis identifying any problems which may have occurred during the run. Need something tangible to show auditors? **SmartLog** can generate a comprehensive customisable report which only has to be printed as and when required for audit purposes. As well as basic time and temperature sampling as with traditional data printers, a complete cycle temperature profile is also displayed giving a graphic representation of the entire cycle. The graph offers various visual options enabling the user to view only what they wish to see. This includes custom probe views, different cycle stages, drying and pressure displays, graphical zoom for more detailed analysis as well as F0 values for food testing laboratories.



## Traceability

The software data cannot be tampered with so is fully compliant for traceability purposes, although can be exported to spreadsheets if required. In addition to help laboratories tackle traceability issues, we now offer a fully



automatic barcode batching system for clients with multiple types of waste. This eliminates the need to manually write down exactly when and what has been autoclaved, streamlining the entire autoclave process.

## Economy

All these features are offered in one standard **SmartLog** package, which comes at a very competitive price, costing less than a standard 2 channel data printer without any ongoing service costs!

## Diagnostic Support

When choosing an autoclave, the back up service is the most serious consideration. With the **SmartLog** diagnostic features, this package could rapidly become the laboratory manager's best friend. The Engineer's details tab, enables a quick and comprehensive overview of the autoclave's technical functions, saving the engineer lots of troubleshooting time, and reducing overall downtime. In addition the **SmartLog** software enables users, to email cycle files directly to Rodwell technical support, where we can analyse any file on our diagnostic computer giving

Log Number	Time	Switches	Mode	Relays	Elapsed time	Chamber	Load
393	09:46:10	02FF	Sterilise	0280	00:05:25	133	133.1
394	09:46:15	02FF	Sterilise	0280	00:05:30	132.5	132.6
395	09:46:20	02FF	Sterilise	0290	00:05:35	132.2	132.4
396	09:46:25	02FF	Sterilise	0290	00:05:40	132.2	132.3
397	09:46:30	06FF	Sterilise	0281	00:05:45	132.6	132.6
398	09:46:35	06FF	Sterilise	0281	00:05:50	132.9	133.2
399	09:46:40	02FF	Sterilise	0280	00:05:55	133	133.1
400	09:46:45	02FF	Sterilise	0280	00:06:00	132.8	132.7

Input conditions	Relays	High probe
<input checked="" type="checkbox"/> Sw 1 Pressure lock 1	<input checked="" type="checkbox"/> RI 1 Heaters	<input type="checkbox"/>
<input checked="" type="checkbox"/> Sw 3 Door bolt 1	<input type="checkbox"/> RI 2 Air Ballast	<input type="checkbox"/>
<input checked="" type="checkbox"/> Sw 49 Door bolt 2	<input type="checkbox"/> RI 3 Exhaust	<input type="checkbox"/>
<input checked="" type="checkbox"/> Sw 51 Door bolt 3	<input type="checkbox"/> RI 4 Water dump	<input type="checkbox"/>
<input checked="" type="checkbox"/> Sw 53 Door bolt 4	<input type="checkbox"/> RI 5 Steam	<input type="checkbox"/>
<input checked="" type="checkbox"/> Sw 55 Outer bolt 1	<input type="checkbox"/> RI 6 Vac break	<input type="checkbox"/>
<input checked="" type="checkbox"/> Sw 57 Outer bolt 2	<input type="checkbox"/> RI 7 Lock	<input type="checkbox"/>
	<input type="checkbox"/> RI 8 Condense	<input type="checkbox"/>
	<input type="checkbox"/> RI 9 Vacuum	<input type="checkbox"/>
	<input type="checkbox"/> RI 10 Chart	<input type="checkbox"/>
	<input type="checkbox"/> RI 11 Cooling	<input type="checkbox"/>
	<input type="checkbox"/> RI 12 AutoFill	<input type="checkbox"/>
	<input type="checkbox"/> RI 13 Dryer	<input type="checkbox"/>
	<input type="checkbox"/> RI 14 Jacket overflow	<input type="checkbox"/>

any user or service agent the benefit of Rodwell technical back up without even being there! This service is completely unique to Rodwell and is all part of our quality after sales care.



## SmartLog+

Now all the benefits of **SmartLog** just got better with **SmartLog+**. In addition to all of the features of the standard system, the '+' version offers a real time down the wire addition, where all files are recorded in duplicate on an adjoined PC, as well as a real time on screen display of all time and temperature information.



# Options and Features Explained

## Accelerated Load Cooling Systems

### Fan Assisted Cooling

(Available on all models except Sapphire)

Powerful fans, strategically located, direct a blast of cool air around the chamber which significantly improves cooling times by up to 50%.

### Water Cooling (Sapphire Only)

The most efficient way of cooling. Cold water passes through a complete water jacket surrounding the autoclave chamber, which rapidly cools the chamber and the load. This system is far more effective than 'cooling coils' fitted to some other autoclaves.

### Air Ballasting

Uses compressed air to improve cooling times even further and prevent 'boil-over' and breakages in bottled liquid loads. A silent air compressor and carbon filter pack (for an oil free supply) can be provided if there is no compressed air supply in the laboratory.

## Heating Systems Diagram

### Heating Systems

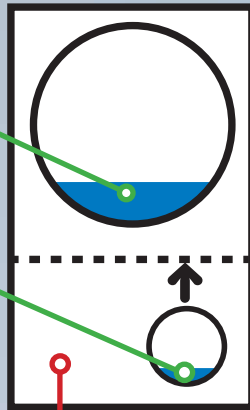
In-chamber electric steam heating generates steam from within a water compartment in the bottom of the chamber below the shelf.

### Electrically Heated by separate steam generator (boiler) (Available of Ambassador, Gemini, Sovereign, Crystal & Sapphire)

Steam is generated by means of a steam generator mounted below the autoclave chamber. This includes a high pressure inlet pump which automatically tops up the steam generator during the cycle.

### Pre-Heated steam generator

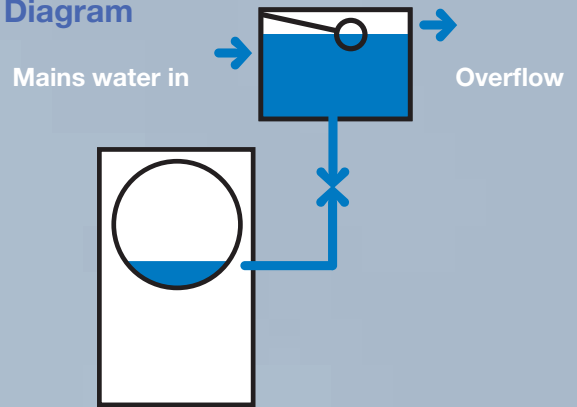
This works on a similar principle as above. Except the steam generator remains constantly heated providing instant heating of the chamber when a cycle is started.



The steam generator stands separate from the autoclave for top loading models.

More powerful pre-heated steam generators are required for electrically heated liquid vacuum autoclaves.

## Auto-fill Diagram



### Auto-fill Systems

A water supply is required for automatic fill options. The supply must be fed via a break tank, which isolates the chamber from the mains supply to comply with regulations.

### Manual Fill

(available on all models except Sapphire and Crystal)

Basic in-chamber heated autoclaves are manual fill for simplicity. No water supply is required for manual fill machines unless a drain line condenser is specified. The MP25 notifies the operator if the chamber is low on water. The autoclave cannot be started unless the chamber has sufficient water. The chamber is simply topped up with a jug of water.

### Auto-fill for in-chamber heating

In-chamber heated autoclaves can be manufactured with a 'top-up system'. If the MP25 senses the chamber is low, it sends a signal to a motorised valve which opens to allow the chamber to be topped up from the water supply.

### Auto-drain and Re-fill for in-chamber heating

The chamber dumps all the water from the chamber at the end of the cycle and fills with fresh water when a new cycle is started.

### Auto-fill for steam generator models

Note that automatic fill is standard on autoclaves supplied with a separate steam generator.

### Water Treatment Systems

An industrial grade electronic scale prevention system alters the physical characteristics of minerals within the inlet water supply so they pass through the autoclave without sticking to the chamber or boiler.

### Inlet Water Filter

Industrial grade filter traps most scale and chalk and other large debris from the mains water supply.

### Vacuum Air Removal Systems

Typically the key to good sterilisation results is to remove all the air from within the chamber; particularly on waste and porous loads. By adding a vacuum option this ensures that no air pockets remain in the chamber and that the correct temperatures are achieved. Vacuum systems are also an essential element to drying options.

### Direct Steam Heated

Heating by means of a steam inlet valve from an external steam supply. A saturated supply regulated to a pressure of between 35lb and 70lb at 2.62 bar is required (depending on model requirements).

# Drain Systems

## Condense Collector

(Available for manual fill autoclaves only\*)

Eliminates the need for a drain service by collecting the condense in a stainless steel container.

\*Basic manual fill autoclaves are Phoenix, Monarch, Ensign, Ambassador and Gemini.

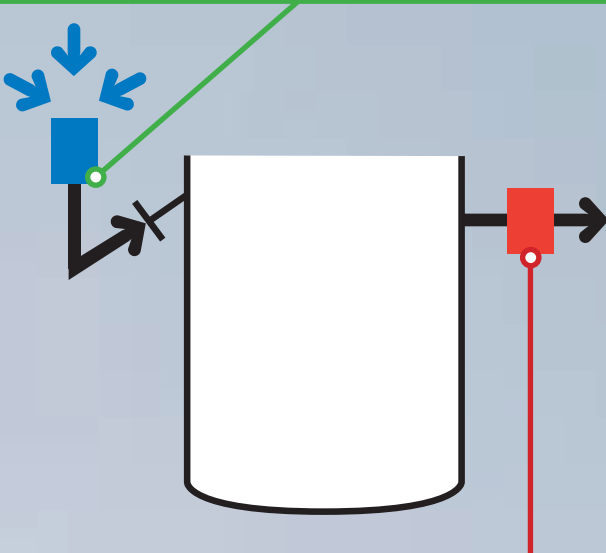
Not suitable for direct steam autoclaves.

## Drain Line Condenser

This option is required if the autoclave is to be connected to a plastic drain service either directly or indirectly. Works by injecting cold water in to the drain if it reaches temperatures over 50°C. There is also a second type of drain line condenser which works like a mini heat exchange and does not require a water supply.

## Vacuum Break & Filter

As the chamber cools a natural vacuum is draw; therefore a vacuum break can be offered completes with a filter to filter the incoming air being drawn back into the chamber.



## Drain Line Filters (HEPA Filters)

Hepa filters are fitted to the autoclave vent to prevent the release of dangerous pathogens into the drain. Rodwell also offers a Hepa filter monitoring system.

## Condensate Retention

Hepa filters are fitted to the autoclave vent to prevent the release of dangerous pathogens into the drain.

## Chamber Furniture

A complete range of shelves, containers & discard systems are available to enhance the performance of your autoclave. Rodwell Scientific Instruments' chamber furniture is specifically tailored to maximise space within the chamber. Bespoke furniture can be manufactured on request.

## Shelves

Our shelves are manufactured using rigid punched stainless steel capable of taking the heaviest of loads. All front loading units come equipped with one shelf with extra shelves available as optional.

## Baskets

Our baskets are manufactured using strengthened grade 316 stainless steel wire mesh for optimum durability. All top loading autoclaves are equipped with one basket as standard with extra baskets available as optional.

## Discard Containers & Systems

Laboratory waste must be autoclaved to render it safe prior to disposal. Research has shown that a high efficiency vacuum air removal system is necessary when sterilising waste in solid sided containers with a height of greater than 200mm.

However, Rodwell Scientific Instruments offer a unique patented range of discard containers which allows total efficient sterilisation of laboratory waste without the need for a vacuum system.

Advantages of the Rodwell Waste Discard Container system are:

- Simplifies the autoclave by eliminating the need for a vacuum system.
- Efficient sterilisation of waste by naturally removing air pockets
- Trivet system catches spillages and helps keep the chamber clean for reduced house keeping

The Rodwell Waste Discard Container system is available on all models except the Crystal & Sapphire range. For these units standard solid sided containers and vacuum air removal systems are recommended for sterilising waste.



## We're here to help....

If you'd like help or advice choosing the right autoclave please get in touch. Our knowledgeable sales people will do their best to guide you toward the choice that is right for your application and budget.

+44 (0) 1268 286646

[autoclavesales@rodwellgroup.co.uk](mailto:autoclavesales@rodwellgroup.co.uk)

# Options and Features Explained

## The best after-sales care for your autoclave

Every Rodwell Autoclave is manufactured to the highest standards and will provide many years of reliable service if looked after and maintained by an approved, accredited Rodwell engineer. Our service engineers have extensive knowledge and the very latest up-to-date technical information for our equipment, as well as the latest working practices and procedures.

To get the very best from your autoclave, it is essential that it is maintained by the people who know your autoclave best - Rodwell trained and accredited engineers or approved Rodwell service agents. They understand your autoclave, care about it and are committed to achieving your complete satisfaction. Not only that, it is in Rodwell Engineering Group's best interest to keep your autoclave running reliably for as long as possible in order to maintain the reputation for reliability and durability that we currently enjoy.



### Expertise

Rodwell and their approved service agents have highly trained technicians with the specialist skills and knowledge required to maintain your autoclave in accordance with Rodwell Scientific Instruments' recommendations and leave your equipment in a SAFE STATE OF REPAIR. Our trained engineers have access to the latest technical information so they know precisely what's needed to maintain your autoclave in a safe and reliable condition.

### Specialist Equipment

Every Rodwell Engineer has access to a vast array of specialised spare parts and tools essential to keep your autoclave in a reliable, safe state of repair. Consider this: an autoclave is a pressure vessel with a door that has a force equivalent to 3 to 11 tonnes exerted on it when up to pressure. Do you want to be responsible for any accidents or litigation as a result of your authorisation for maintenance by a company not trained or accredited by the manufacturer of the equipment?

### Genuine Parts

Your autoclave is made up of hundreds of different parts, set up to various tolerances and finely set to give maximum performance and paramount safety. Whenever a worn part is replaced, you should make sure that genuine Rodwell Scientific Instruments parts are used. They are designed, tested and manufactured to the original tolerances and specification. Only Rodwell Engineering know exactly what is required of each part because it is only Rodwell Scientific Instruments who designed each part to come together perfectly to make the overall machine - your Rodwell Autoclave.

### Calibration

Rodwell Scientific Instruments offer a calibration service using the very latest cycle recording equipment. This work can be carried out to the most demanding standards. The equipment and working practices equate or improve on any of those standards dictated by any accreditation authority and Rodwell Scientific Instruments have the knowledge and expertise to fine-tune your autoclave if deemed necessary.



.....  
**Please feel free to contact our technical service team with any questions regarding the maintenance of your autoclave, or queries about spare parts.**

**+44 (0) 1268 286646**

**[autoclaveservice@rodwellgroup.co.uk](mailto:autoclaveservice@rodwellgroup.co.uk)**  
.....

**Rodwell Scientific Instruments**  
Bentalls  
Pipps Hill Industrial Estate  
Basildon  
Essex  
SS14 3SD  
United Kingdom

Tel: +44 (0) 1268 286646  
Fax: +44 (0) 1268 287799

Email: [autoclavesales@rodwellgroup.co.uk](mailto:autoclavesales@rodwellgroup.co.uk)  
Online: [www.rodwell-autoclave.com](http://www.rodwell-autoclave.com)



Every effort has been made to ensure that the information in this brochure is correct at time of going to press. The services and products described in the brochure are subject to continuous development and improvement and Rodwell Scientific Instruments reserves the right to change these at anytime. Actual colours may vary. All trademarks acknowledged. E.&O.E.