

YKJX-Y500

Air Purification Sterilizer

Operation Manual

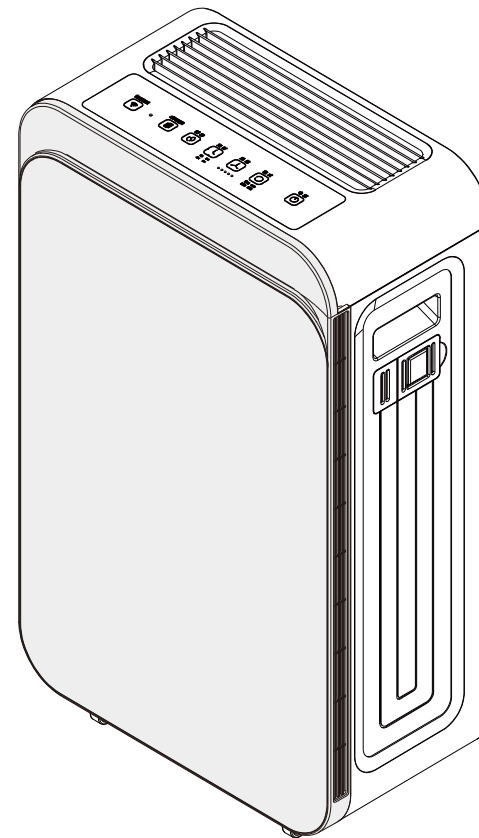


Model
YKJX-Y500

Certificate of Quality

checker:

Manufacturer: Qingdao Haier Biomedical Co., Ltd.
Address: Haier Industrial Park, Economic Technology Development
Zone, Qingdao P.R. China
Web: www.haierbiomedical.com
Revision Date: 04/2020
Version: 1st, 2020
Dedicated code: 0270500000
V13026





- Please read this manual carefully before use.
- The company reserves the right to interpret this manual.
- Please refer to the actual product for appearance.
- Product technology or software is subject to upgrade without prior notice.


Contents

Safety instructions and precautions.....	1
Product features and functions.....	2
Product structure	4
Control panel instructions.....	5
Touch key operation instructions	5
Product usage	6
Warranty period	8
Maintenance and care	9
FAQ explanation.....	10
Transportation and storage conditions	10

Safety instructions and precautions

Precautions during placement	
 Caution	1. Use it in flat and solid places to avoid it from being tipped during use and leading to short circuit or leakage fire.
	2. Use it in places where it is not easy to contact with water to avoid resulting in short circuit and fire.
	3. Do not place vases with water or other containers on the body of the machine, so as to avoid leakage, short circuit, fire or damage to the product after insulation fission caused by infiltration of water into the machine.
	4. Do not use it in places where oil and combustible gas may leak, so as to avoid the fire after the concentration of leakage around the machine.
	5. For indoor use only, do not use it in places with direct sunlight and rain.

Precautions during use	
 Caution	1. Please do not block the air inlet and outlet of this product, so as to avoid damaging the product after overheating inside the machine.
	2. Do not use the equipment beyond the rated voltage (AC220 V/50/60 Hz). Otherwise, it will damage the internal motor of the product and cause short circuit or fire.
	3. Do not place the equipment next to the heating appliance. Otherwise, fire will be caused by equipment body melting.
	4. Do not dismantle the product for transformation without permission, to avoid fire, electric leakage or injury.
	5. In the event of long-term non-use, remove the plug from the socket for safety.
	6. Do not move the product during the operation of the machine to avoid electric leakage.
	7. When cleaning the product, replacing or cleaning the filter, take off the power plug.
	8. If the power cord or power plug is damaged, please stop using this product immediately and send it to the qualified maintenance point or the after-sales service center designated by the company for repair and replacement.
	9. This appliance contains a UV-C emitter. Unintended use of the appliance or damage to the housing may result in the escape of dangerous UV-C radiation. UV-C radiation may, even in little doses, cause harm to the eyes and skin.
	10. Appliances that are obviously damaged must not be operated.
	11. Read the maintenance instructions before opening the appliance; The appliance must be disconnected from the supply before replacing the UV-C emitter.

Precautions during use	
 Caution	12. This appliance is not intended for use by person (including children) with reduced physical, sensory or mental capabilities, or lack of experience and knowledge, unless they have been given supervision or instruction concerning use of the appliance by a person responsible for their safety.
	13. Children should be supervised to ensure that they do not play with the appliance.
	14. The UV-C emitter and filter screen need to be replaced by our after-sales personnel. Customers are not allowed to replace them without permission to avoid personal injury.

Product features and functions

YKJX-Y500 medical air sterilizer has multiple filtration and purification systems, which can efficiently filter suspended particles such as dander, hair, dust, pollen, and smoke and remove indoor organic gases, Voc and TVOC and other odors, effectively carrying out air purification and disinfection.

- Plastic frame filter screen can filter the large particles suspended in the air. It can be washed with water and used for a long time without replacement.
- The primary filter screen can effectively block large suspended matters such as hair, dust and paper dust.
- The professional high-efficiency antibacterial HEPA can filter out common particles by the principle of laminar flow filtration, and kill bacteria on the surface of the filter screen and reduce secondary pollution with silver ion antibacterial layer.
- Professional honeycomb filter can effectively remove odour gas, benzene, ammonia and other harmful gases in the air with high-efficiency activated carbon and additives.
- Professional antibacterial photocatalyst and special UV lamp can kill 99.9% of staphylococcus albus (8032) by filtration, and achieve that the sterilization time of natural bacteria in the air with the extinction rate higher than or equal to 90% does not exceed 3 hours.
- Healthy negative ions can release more than 3 million negative ions, improve the "vitamins" content in the air, and enhance the comfort of ambient air.
- Sterilization principle: Killing bacteria in the air by ultraviolet lamp.
- Main sterilizing factor: Ultraviolet light with a wavelength of 253.7 nm.
- Types of killed microorganisms: Harmful bacteria in the air.
- Scope of use: It is suitable for air disinfection in medical and health institutions, schools and public places in the presence of people.

FAQ explanation

S/N	Faults	Check	Solutions
1	Power on failure of machine	If the power indicator lamp is off, please check whether the power plug is plugged in? Is the socket powered on? Is the contact good?	Please plug in power plug properly.
2	Dull sound and small sound with the disinfection function on	Is the filter package removed?	Remove the package and reinstall it according to the manual.
		Is there any foreign matter blocking the air outlet or air inlet?	Turn off the machine and clean up foreign matters blocking the air inlet and air outlet.
3	Peculiar smell at air outlet	Is there a large amount of odour generated temporarily? For example, when many people are smoking together.	The odour will gradually disappear after running the machine for a period of time.
		Does the filter screen absorb too much odour and smoke?	Clean or replace the filter screen to be replaced.
		Is the replacement time for composite filter screen due.	

Transportation and storage conditions

It is recommended that the equipment be transported and stored under the following conditions:

Ambient temperature: 0°C~ 40°C;

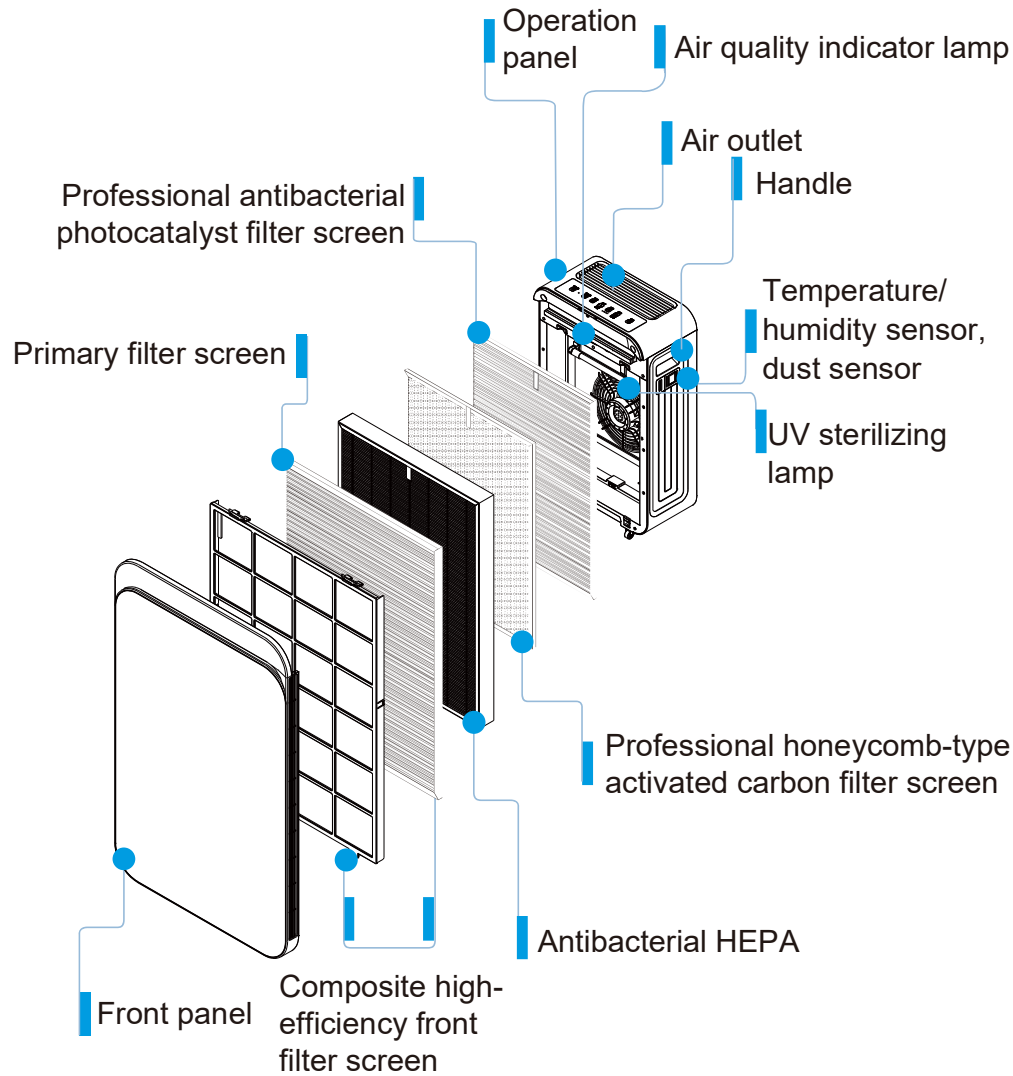
Ambient humidity: 20% ~ 90% RH;

Note: There is an air purification sterilizer and a manual in the sales package of this machine. If parts are missing after unpacking, please contact aftersales service personnel in time.

• Main parameters

Product model	YKJX-Y500
Rated voltage (V) / Freq(Hz)	AC 220V-240V / 50/60Hz
Rated power (W)	100
Circulating air volume (m ³ /h)	≥500
Negative ion concentration (10,000/cm ³)	≥300
Noise (dB(A))	≤55
Applicable volume(m ³)	≤60
Net Weight (kg)	13
Exterior Dimension (mm) (W*D*H)	439 ×229 ×735
Working conditions	<ul style="list-style-type: none"> • Ambient temperature: 0°C ~ 40°C • Relative humidity: 20% ~ 90%RH

Product structure



Maintenance and care

In order to improve the service life of sterilizer, please carry out regular maintenance. Before maintenance, be sure to turn off the sterilizer and take off the power plug. After the sterilizer is used, if the filter screen needs to be replaced, the "Filter Screen Replacement" icon on the control panel flashes to prompt the user to replace the filter screen.

During the use of the sterilizer, it is recommended to clean the composite high-efficiency front filter every three months to prolong the service life and ensure dust removal effect of the primary filter. The primary filter needs to be replaced after 1 year of use.



Caution

Note: All maintenance parts can only be inspected and provided by our authorized service organization.

1. When cleaning the outer surface, please cut off the power supply first and clean it with a soft and clean dry cloth. Do not clean with alcohol, gasoline, benzene and other chemical solvents.

2. If the filter screen needs to be cleaned or replaced after accumulated use for a certain period of time, operate as follows: (Fig. A, Fig. B, Fig. C, Fig. D, Fig. E, Fig. F)

1) As shown in Fig. A: With both hands on the upper side of the machine, first pull the front shell in the direction of 1 and then lift the front shell upward in the direction of 2.

2) As shown in Fig. B: First press down the buckle of the composite high-efficiency front filter screen in the direction of 1, then pull the filter screen in the direction of 2, and finally lift up the filter screen in the direction of 3 and take it out.

3) As shown in Fig. C: Pull up the primary filter screen from the plastic frame of the composite high-efficiency front filter screen.

4) As shown in Figure D: Hold the pull strap of the high-efficiency HEPA filter screen in the direction of the arrow and take out the high-efficiency HEPA filter screen.

5) As shown in Fig. E: Grasp the pull strap of the activated carbon filter screen in the direction of the arrow and take out the activated carbon filter screen.

6) As shown in Fig. F: Grasp the pull strap of the photocatalyst filter screen in the direction of the arrow and take out the photocatalyst filter screen.

7) Install the filter screen in the correct order.



Caution

Note: It is recommended that high-efficiency HEPA filter screen and activated carbon filter screen be maintained and replaced once every 3 to 6 months, depending on the usage. The high-efficiency HEPA filter screen, activated carbon filter screen, photocatalyst filter screen, and primary filter screen cannot be washed with water.



Fig. A

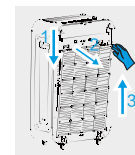


Fig. B



Fig. C

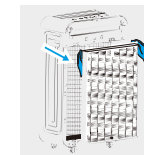


Fig. D



Fig. E

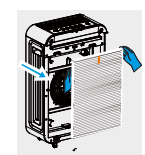


Fig. F

- UV key

After the sterilizer is turned on, the UV lamp usage time is counted.

When the UV lamp needs to be replaced within the remaining 800 hours, each time the machine is turned on, the buzzer sounds 10 times, and the UV replacement indicator lamp flashes until the UV lamp is replaced and powered on again.

In case of failure of UV lamp, each time the machine is turned on, the buzzer will sound 10 times and the UV replacement indicator lamp will be on for a long time.

After replacing the UV lamp, press and hold "UV" key for more than 5 seconds.

After the buzzer sounds 3 times, the indicator lamp will go out, and after powering on again, the UV lamp time will be reset, and the timer will be restarted.

Turn on the UV light by default when starting up. Press the "UV" key to turn off and on the UV light. At the same time, the key light is on when the UV light is on and off when the UV light is off.

- Lock key

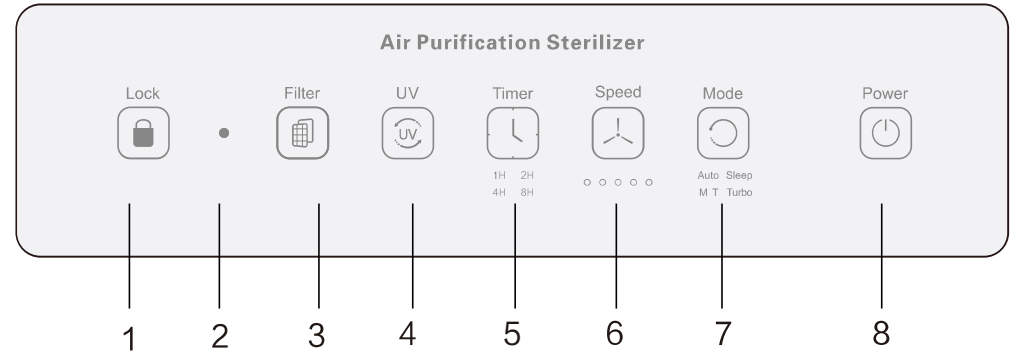
In the power on state, long press the lock key for 5 seconds, the child lock function will be turned on, and the lock key indicator lamp will flash. Except for the lock key, the function of other keys is invalid. Press and hold the lock key for 5 seconds again, the child lock function will be turned off, the mode indicator lamp will be kept on, and all key functions will return to normal.

Warranty period

The whole machine is guaranteed for repair for 1 year, except for consumables.

Control panel instructions

Note: The font and content of the display panel are subject to the actual product.



Touch key operation instructions

1	Lock	Lock switch
2	Light perception	In intelligent mode, the machine enters into silent mode after more than 5 minutes in the dark. In the bright for more than 5 minutes, automatically exit the mute mode.
3	Filter	After the filter screen is replaced, press and hold the it for more than 5 seconds to count the usage time of the filter screen again.
4	UV	After the UV lamp is replaced,press and hold the it for more than 5 seconds to count the usage time of the UV lamp again.
5	Timer	The sterilizer can be set to be turned off at a fixed time after 1, 2, 4 and 8 hour(s) by it.
6	Speed	It can be used to adjust the wind speed of the fan, which is divided into 5 grades.
7	Mode	The sterilizer can be selected to work in intelligent, manual, mute and powerful modes by it.
8	Power	Power switch

Product usage

• Power key

After the power cord is firmly inserted into the power socket, press the power key, the air purification sterilizer (hereinafter referred to as "sterilizer") will start up, and enter the intelligent mode by default. The fan will start up in grade 1, and the power, mode and wind speed indicator lamps will be on. Press the power key again to turn off the sterilizer and enter the standby mode.

• Mode key

The sterilizer can be switched for working under intelligent, mute, manual, or powerful modes in turn by pressing the mode key.

1) Intelligent mode

When the sterilizer is in intelligent mode, it will work automatically according to the actual indoor air quality status.

The air quality status is divided into five levels: healthy, good, moderate, unhealthy and polluted. The different colors of the air quality indicator lamp represent the air quality in different states. See the table below for details.

Air quality	Wind speed grade	Air quality indicator lamp color
Polluted	5	Red
Unhealthy	4	Orange
Moderate	3	Yellow
Good	2	Yellow green
Healthy	1	Green

2) Mute mode

If the sterilizer is required to enter the "Mute" mode, press the "Mode" key to select "Mute". Then the "Mute" indicator lamp will be on, the wind speed will be changed to grade 1, the timing will be on for 8 hours by default, and the brightness of the air quality indicator lamp will be reduced. In the "Mute" mode, power supply, wind speed, and timing functions can be adjusted.

After entering the "Mute" mode for 30 seconds, the status indicator lamp on the control panel will automatically dim and the air quality indicator will slowly go out. To exit the "Mute" mode, press the "Mode" key again to switch the sterilizer working mode; or directly press the "Power" key to turn it off.

Note: The sterilizer can sense light automatically. If it is placed in the dark for more than 3 minutes, it will automatically enter the "Mute" mode.

3) Manual mode

Select "Manual" by pressing the "Mode" key, and the sterilizer will work in the manual mode. In the manual mode, the power supply, wind speed and timing functions can be adjusted manually.

Note: One-key switching to manual mode: In smart or powerful mode, press the wind speed key to switch to manual mode.

4) Powerful mode

If the sterilizer is required to enter the "Powerful" mode, press the "Mode" key to select "Powerful". At this time, the "Powerful" indicator lamp will be on, the wind speed will change to grade 5, and all disinfection modules will be started. To exit the "Powerful" mode, press the "Mode" key to switch the sterilizer working mode. Press the "Power" key to turn off the sterilizer.

In powerful mode, the power supply, wind speed and timing can be adjusted. After adjusting the wind speed, switch to manual mode automatically.

• Speed key

When the sterilizer is working, press the "Speed" key to adjust the wind speed, and the indicator lamp of corresponding wind speed will be on. Five grades are set for wind speed, the 1st grade is the lowest speed, and the 5th grade is the highest speed.

• Timer key

When the sterilizer is working, press the "Timer" key, the timing key and timing lamp will be on at the same time, and the sterilizer can be set to be turned off at a fixed time after 1, 2, 4 and 8 hour(s). At the set time, the sterilizer automatically turns off and enters the standby state.

• Filter key

After the sterilizer is turned on, the usage time of the filter screen is counted. When the filter screen needs to be replaced within the remaining 200 hours, each time the machine is turned on, the buzzer sounds 10 times, and the filter screen replacement lamp flashes continuously until the filter screen is replaced and reset.

After replacing with new filter screen, press and hold the "Filter" key for more than 5 seconds. After the sterilizer sounds three times, the "Filter" indicator lamp goes out, and the usage time of the new filter screen is counted.