

Software Instructions

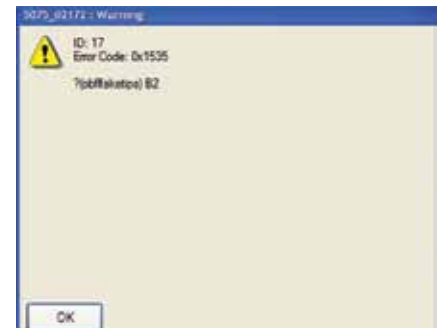
Thermo Scientific™ Automation Pipette Tips for Eppendorf® epMotion® Automated Pipetting System

Eppendorf epMotion automated pipetting system software versions 10.09.0000 and later have an updated tip box scanning procedure. Using the onboard camera, this new software version contains an enhanced tip box scanning step that determines if the tip box is Eppendorf OEM or a competitor's tip box.

Workaround 1

Continue the protocol after receiving the error

- Click the OK button to continue the protocol
- Since the tip scan step is bypassed, the instrument will not verify the number of tips available in the rack
- The pipetting head will start at the A1 position in the rack



Workaround 2

Disable the Tips Scan step at the beginning of the run

- After a protocol has been started, the following Labware Settings dialogue box appears
- Disable the tip box scan by deselecting the “Tips” setting in the dialogue box show to the right
 - When this step is bypassed, the software does not verify the tip type or the number of tips available in the rack
 - The pipetting head will start in the A1 position on the rack



Workaround 3

Disable the tip box scan function by default for all protocols

- Go to the View Menu > Functions > Settings Tab > Optical Sensor
- Deselect Tips and click Apply
- By implementing this workaround you will not have to deselect the tips option every time a protocol is run. The “Tips” box will already be unchecked when the Labware Setting dialogue box appears.



thermoscientific.com/automationtips

© 2013 Thermo Fisher Scientific. All rights reserved. "Eppendorf" and "epMotion" are registered trademarks of Eppendorf AG. All other trademarks are the property of Thermo Fisher Scientific and its subsidiaries.

North America: +1 800 995 2787 • info.sandiego@thermofisher.com

Outside North America: +1 858 453 7551 • info.sandiego@thermofisher.com

PN407250

Thermo
SCIENTIFIC
Part of Thermo Fisher Scientific