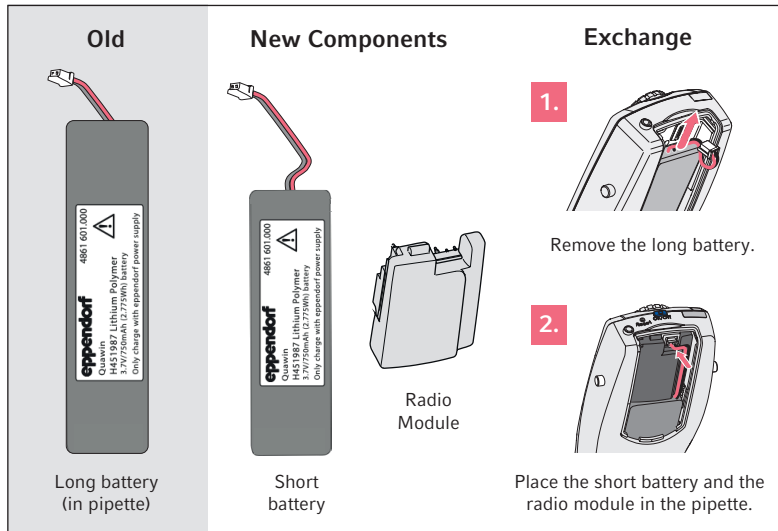
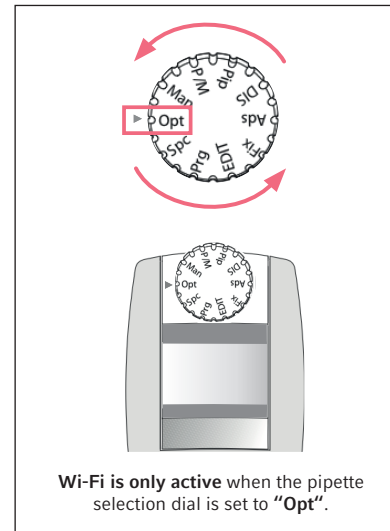


# Quick Setup Guide - VisioNize pipette manager

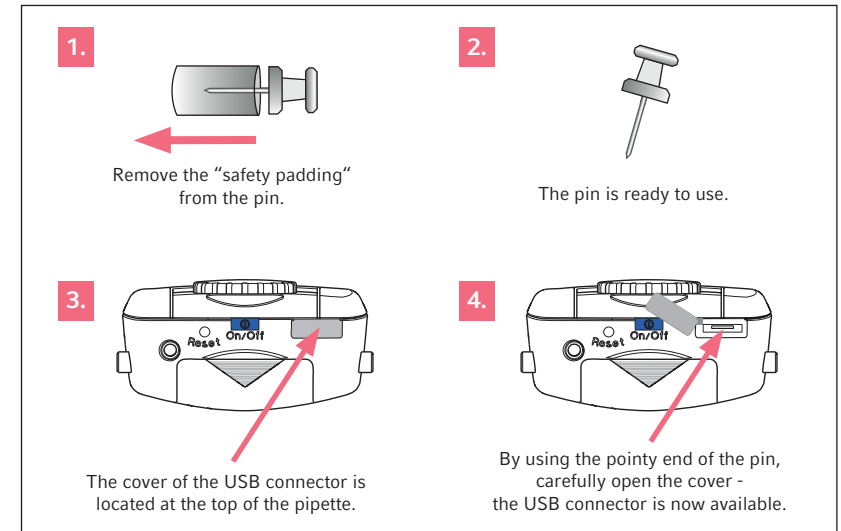
1. Replace the long battery (already in pipette) with the radio module and the new shorter battery



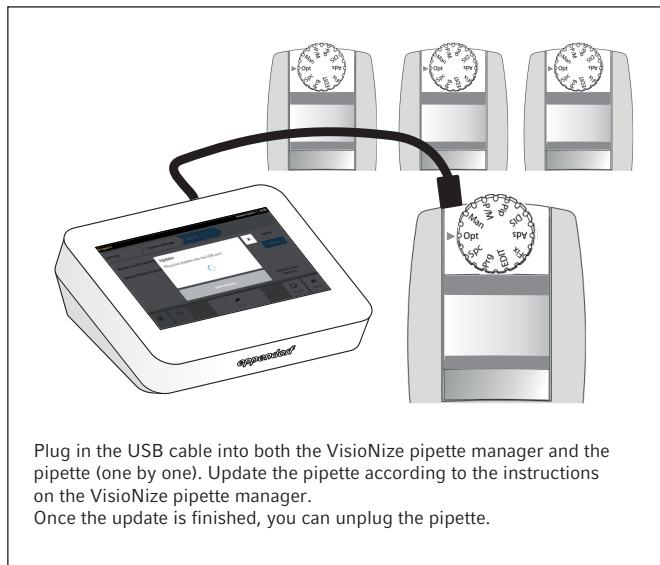
2. Turn the selection dial to "Opt"



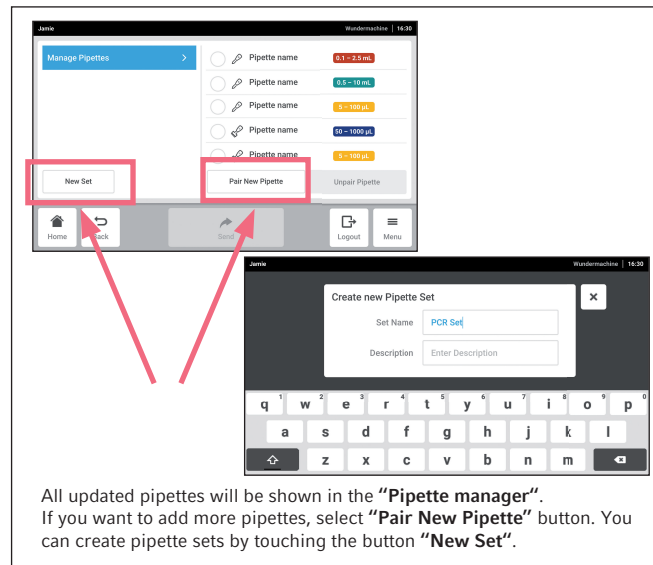
3. Open the cover of the USB connector by using the pin



4. Connect and update the pipette with the VisioNize pipette manager



5. Create pipette sets



6. Start pipetting

