



**TWIRL'BLUE**

## TWIRL'BLUE

The **TWIRL'BLUE** is designed to help the food industry counter the major problem of foreign body contamination. Its highly visible blue color allows immediate detection at any stage of food production to avoid potential product recalls and to ensure optimal safety in the factory environment.

**The essential sampling bag for the food industry!**

## Features and benefits

- Made of FDA compliant material
- Can accommodate solid, semi-solid and liquid samples
- Maximum bag opening to facilitate sample insertion
- Blue tear-off strip to help segregation within the factory environment
- Can be used in homogenizer
- Sterility guaranteed
- RNase, DNase and pyrogens free



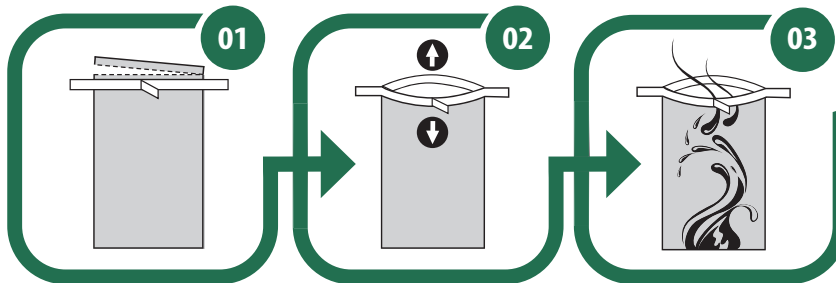
**Inspired by your challenges**

**LABPLAS**

VISIT [LABPLAS.COM](http://LABPLAS.COM) FOR ADDITIONAL INFORMATION ABOUT OUR PRODUCTS | Tel: 1.450.649.7343



# TWIRL'BLUE BAG INSTRUCTION



01  
Tear off the top of the bag  
along the perforations

02  
Use pull-tabs to  
open the bag

03  
Aseptically insert  
the sample in the bag



04  
Hold the bag by the  
wire-ends and remove as  
much air as possible

05  
Twirl the bag around the  
wires, at least 3 times,  
to close the bag

06  
Fold both wire-ends onto  
the bag to provide airtight  
and leak-proof closure



Inspired by your challenges

LABPLAS

VISIT [LABPLAS.COM](http://LABPLAS.COM) FOR ADDITIONAL INFORMATION ABOUT OUR PRODUCTS | Tel: 1.450.649.7343

