

Corning® 3D Clear Tissue Clearing Reagent

Quick Start Guide

CORNING



READ THIS BEFORE WORKING WITH CORNING 3D CLEAR TISSUE CLEARING REAGENT

Corning 3D Clear is designed to simplify tissue clearing and visualization, but there are some best practices that will help optimize the process. Please review this Quick Start Guide which outlines considerations and preparation steps you should follow before you begin to label, clear, and image tissue samples.



To maximize your results using Corning 3D Clear, follow the steps below.

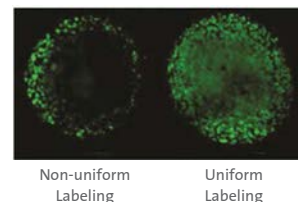
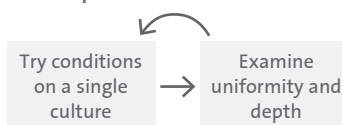
Fluorescent Protein	Nuclear and Viability Stains
Unless combined with immunolabeling, there is no need to perform permeabilization or labeling steps.	
Proceed directly to clearing, and perform dehydration with ethanol at 4°C (see reverse side).	Apply stain as directed by manufacturer, fix tissue, and proceed directly to dehydration and clearing (see reverse side).

Immunolabeling

Optimizing the antibody dilution is a critical step to successful tissue clearing. We recommend taking a few days to optimize your tissue staining, which overall will save you time and effort moving forward.

1. Optimizing dilution and duration: Use at least six *in vitro* models to explore dilutions ranging from 1:500 to 1:50 and durations from 30 minutes to 12 hours.
2. Image using a confocal microscope and look for even staining in Z sections.
3. If antibody concentration is too low, there will be low signal-to-noise ratio. If it's too high, the outer layers will "shadow" the inner layers due to the absorbency in the outer layers.
4. The antibody solution should completely cover the tissue of interest.

Optimization at a Glance



Permeabilization

		3D Cell Culture
1X	PBS	15 min.
1X	MeOH	15 min.
1X	20% DMSO/MeOH	15 min.
1X	MeOH	15 min.
1X	PBS with 1% T x 100	15 min.

NOTE: Make sure that 3D cultures have settled to the bottom of the microplate well before exchanging solutions.

Labeling

		3D Cell Culture
1X	Penetration buffer	15 min.
1X	Blocking buffer	30 min.
1X	Antibody buffer	30 min.
Add nuclear stain(optional)		
5X	1X wash buffer	15 min.
1X	Antibody buffer	30 min.
5X	1X wash buffer	15 min.
Add secondary antibody (optional)		
1X	PBS	15 min.

NOTE: Antibody incubation time will vary from 30 minutes to 12 hours depending on the model.

Clearing

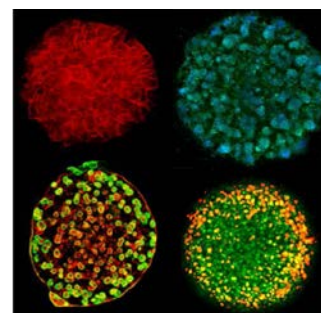
		3D Cell Culture
1X	MeOH	15 min.
1X	Corning 3D Clear Reagent	15 min.

Included with the Starter Kit

■	Penetration buffer	■	Corning 3D Clear reagent
■	Blocking buffer		
■	Antibody buffer		
■	10X wash buffer		

Imaging

1. Once cleared with Corning 3D Clear Tissue Clearing Reagent, the 3D cell culture models should be left in a microplate or transferred to a slide in 3D Clear Tissue Clearing Reagent for imaging.
2. 3D cell culture models cleared with Corning 3D Clear Tissue Clearing Reagent can be imaged with a confocal or widefield microscopy. While Corning 3D Clear Tissue Clearing Reagent will allow for a substantial increase in the number of cells characterized with widefield microscopy, optical Z sectioning will not be possible as it is with confocal microscopy.
3. The ideal imaging systems for imaging 3D cell culture models are high content confocal imaging systems such as the Opera Phenix®/Operetta (PerkinElmer), CellInsight™ CX7 LZR/LED (Thermo Fisher), IN Cell analyzer 6000/6500 (GE), or the ImageXpress® (Molecular Devices).
4. For optimum image quality, use glass, flat-bottom microplates (Corning 4580) or Corning spheroid microplates (Corning 4515, 4520) in a high content confocal imaging system with laser excitation.



For more specific information on claims, visit the Certificates page at www.corning.com/lifesciences.

Warranty/Disclaimer: Unless otherwise specified, all products are for research use only. Not intended for use in diagnostic or therapeutic procedures. Not for use in humans. Corning Life Sciences makes no claims regarding the performance of these products for clinical or diagnostic applications.

For additional product or technical information, visit www.corning.com/lifesciences or call 800.492.1110. Outside the United States, call +1.978.442.2200 or contact your local Corning sales office.

CORNING

Corning Incorporated
Life Sciences

836 North St.
Building 300, Suite 3401
Tewksbury, MA 01876
t 800.492.1110
t 978.442.2200
f 978.442.2476

www.corning.com/lifesciences

ASIA/PACIFIC
Australia/New Zealand
t 61 427286832

Chinese Mainland
t 86 21 3338 4338
f 86 21 3338 4300

India
t 91 124 4604000
f 91 124 4604099

Japan
t 81 3-3586 1996
f 81 3-3586 1291

Korea
t 82 2-796-9500
f 82 2-796-9300

Singapore
t 65 6572-9740
f 65 6735-2913

Taiwan
t 886 2-2716-0338
f 886 2-2516-7500

EUROPE
CSEurope@corning.com

France
t 0800 916 882
f 0800 918 636

Germany
t 0800 101 1153
f 0800 101 2427

The Netherlands
t 020 655 79 28
f 020 659 76 73

United Kingdom
t 0800 376 8660
f 0800 279 1117

All Other European Countries
t +31 (0) 206 59 60 51
f +31 (0) 206 59 76 73

LATIN AMERICA
grupoLA@corning.com

Brazil
t 55 (11) 3089-7400

Mexico
t (52-81) 8158-8400